

MainStay Winslow Large Cap Growth Fund

Message from the President and Semiannual Report

Unaudited | April 30, 2024

Special Notice:

Beginning in July 2024, new regulations issued by the Securities and Exchange Commission (SEC) will take effect requiring open-end mutual fund companies and ETFs to (1) overhaul the content of their shareholder reports and (2) mail paper copies of the new tailored shareholder reports to shareholders who have not opted to receive these documents electronically.

If you have not yet elected to receive your shareholder reports electronically, please contact your financial intermediary or visit newyorklifeinvestments.com/accounts.

Not FDIC/NCUA Insured

Not a Deposit

May Lose Value

No Bank Guarantee

Not Insured by Any Government Agency



INVESTMENTS

This page intentionally left blank

Message from the President

Stock and bond markets gained broad ground during the six-month period ended April 30, 2024, bolstered by better-than-expected economic growth and the prospect of monetary easing in the face of a myriad of macroeconomic and geopolitical challenges.

Throughout the reporting period, interest rates remained at their highest levels in decades in most developed countries, with the U.S. federal funds rate in the 5.25%–5.50% range, as central banks struggled to bring inflation under control. Early in the reporting period, the U.S. Federal Reserve began to forecast interest rate cuts in 2024, but delayed action as inflation remained stubbornly high, fluctuating between 3.1% and 3.5%. Nevertheless, despite the increasing cost of capital and tighter lending environment that resulted from sustained high rates, economic growth remained surprisingly robust, supported by high levels of consumer spending, low unemployment and strong corporate earnings. Investors tended to shrug off concerns related to sticky inflation and high interest rates—not to mention the ongoing war in Ukraine, intensifying hostilities in the Middle East and simmering tensions between China and the United States—focusing instead on the positives of continued economic growth and surprisingly strong corporate profits.

The S&P 500[®] Index, a widely regarded benchmark of U.S. market performance, produced double-digit gains, reaching record levels in March 2024. Market strength, which had been narrowly focused on mega-cap, technology-related stocks during the previous six months broadened significantly during the reporting period. All industry sectors produced positive results, with the strongest returns in communication services, information technology and industrials, and more moderate gains in the lagging energy, real estate and consumer staples areas. Growth-oriented shares slightly outperformed value-oriented

issues, while large- and mid-cap stocks modestly outperformed their small-cap counterparts. Most overseas equity markets trailed the U.S. market, as developed international economies experienced relatively low growth rates, and weak economic conditions in China undermined emerging markets.

Bonds generally gained ground as well. The yield on the 10-year Treasury note ranged between approximately 4.7% and 3.8%, while the 2-year Treasury yield remained slightly higher, between approximately 5.0% and 4.1%, in an inverted curve pattern often viewed as indicative of an impending economic slowdown. Nevertheless, the prevailing environment of stable interest rates and attractive yields provided a favorable environment for fixed-income investors. Long-term Treasury bonds and investment-grade corporate bonds produced similar gains, while high yield bonds advanced by a slightly greater margin, despite the added risks implicit in an uptick in default rates. International bond markets modestly outperformed their U.S. counterparts, led by a rebound in the performance of emerging-markets debt.

The risks and uncertainties inherent in today's markets call for the kind of insight and expertise that New York Life Investments offers through our one-on-one philosophy, long-lasting focus, and multi-boutique approach.

Thank you for trusting us to help you meet your investment needs.

Sincerely,



Kirk C. Lehneis
President

The opinions expressed are as of the date of this report and are subject to change. There is no guarantee that any forecast made will come to pass. This material does not constitute investment advice and is not intended as an endorsement of any specific investment. Past performance is no guarantee of future results.

Table of Contents

Semiannual Report

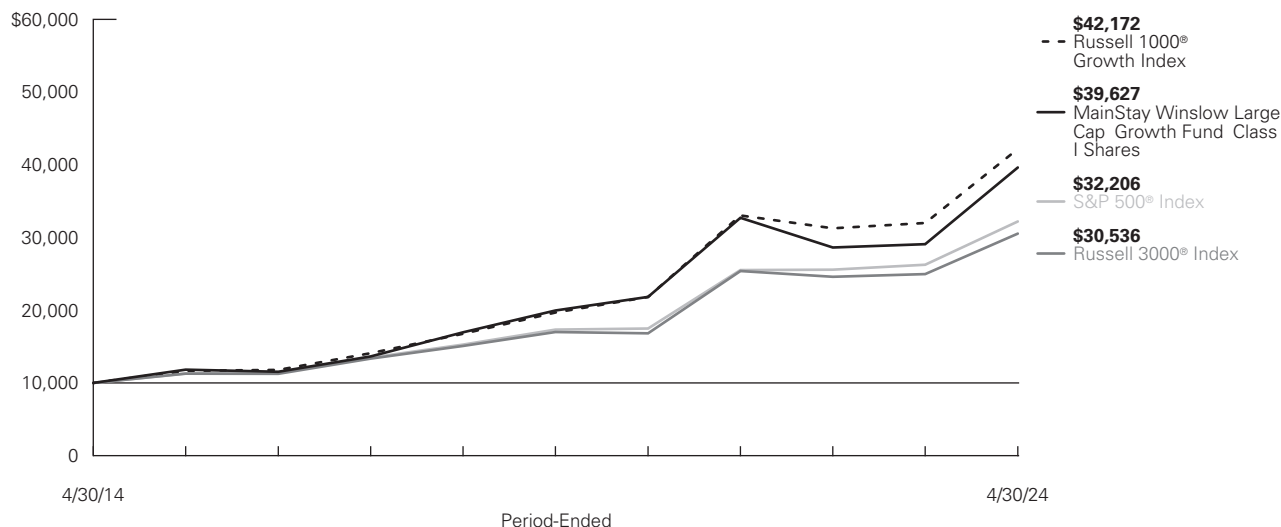
Investment and Performance Comparison	5
Portfolio of Investments	9
Financial Statements	12
Notes to Financial Statements	23
Board Consideration and Approval of Management Agreement and Subadvisory Agreement	32
Discussion of the Operation and Effectiveness of the Fund's Liquidity Risk Management Program	37
Proxy Voting Policies and Procedures and Proxy Voting Record	38
Shareholder Reports and Quarterly Portfolio Disclosure	38

Investors should refer to the Fund's Summary Prospectus and/or Prospectus and consider the Fund's investment objectives, strategies, risks, charges and expenses carefully before investing. The Summary Prospectus and/or Prospectus contain this and other information about the Fund. You may obtain copies of the Fund's Summary Prospectus, Prospectus and Statement of Additional Information, which includes information about The MainStay Funds' Trustees, free of charge, upon request, by calling toll-free 800-624-6782, by writing to NYLIFE Distributors LLC, Attn: MainStay Marketing Department, 30 Hudson Street, Jersey City, NJ 07302 or by sending an e-mail to MainStayShareholderServices@nylim.com. These documents are also available on dfinview.com/NYLIM. Please read the Fund's Summary Prospectus and/or Prospectus carefully before investing.

Investment and Performance Comparison (Unaudited)

Performance data quoted represents past performance. Past performance is no guarantee of future results. Because of market volatility and other factors, current performance may be lower or higher than the figures shown. Investment return and principal value will fluctuate, and as a result, when shares are redeemed, they may be worth more or less than their original cost. The graph below depicts the historical performance of Class I shares of the Fund. Performance will vary from class to class based on differences in class-specific expenses and sales charges. For performance information current to the most recent month-end, please call 800-624-6782 or visit newyorklifeinvestments.com.

The performance table and graph do not reflect the deduction of taxes that a shareholder would pay on distributions or Fund share redemptions. Total returns reflect maximum applicable sales charges as indicated in the table below, if any, changes in share price, and reinvestment of dividend and capital gain distributions. The graph assumes the initial investment amount shown below and reflects the deduction of all sales charges that would have applied for the period of investment. Performance figures may reflect certain fee waivers and/or expense limitations, without which total returns may have been lower. For more information on share classes and current fee waivers and/or expense limitations (if any), please refer to the Notes to Financial Statements.



Average Annual Total Returns for the Period-Ended April 30, 2024

Class	Sales Charge		Inception Date	Six Months ¹	One Year	Five Years	Ten Years or Since Inception	Gross Expense Ratio ²
Class A Shares	Maximum 5.50% Initial Sales Charge	With sales charges	7/1/1995	20.78%	28.43%	13.13%	13.84%	0.98%
		Excluding sales charges		27.81	35.91	14.42	14.48	0.98
Investor Class Shares ³	Maximum 5.00% Initial Sales Charge	With sales charges	2/28/2008	21.27	28.94	12.95	13.69	1.19
		Excluding sales charges		27.65	35.73	14.23	14.34	1.19
Class B Shares ⁴	Maximum 5.00% CDSC if Redeemed Within the First Six Years of Purchase	With sales charges	4/1/2005	22.06	29.52	13.20	13.48	1.94
		Excluding sales charges		27.06	34.52	13.38	13.48	1.94
Class C Shares	Maximum 1.00% CDSC if Redeemed Within One Year of Purchase	With sales charges	4/1/2005	26.24	33.47	13.36	13.48	1.94
		Excluding sales charges		27.24	34.47	13.36	13.48	1.94
Class I Shares	No Sales Charge		4/1/2005	27.96	36.25	14.70	14.76	0.73
Class R1 Shares	No Sales Charge		4/1/2005	27.92	36.10	14.58	14.64	0.83
Class R2 Shares	No Sales Charge		4/1/2005	27.78	35.85	14.31	14.36	1.08
Class R3 Shares	No Sales Charge		4/28/2006	27.75	35.61	14.05	14.09	1.33
Class R6 Shares	No Sales Charge		6/17/2013	28.04	36.36	14.80	14.87	0.64
SIMPLE Class Shares	No Sales Charge		8/31/2020	27.65	35.61	N/A	8.35	1.24

1. Not annualized.

2. The gross expense ratios presented reflect the Fund's "Total Annual Fund Operating Expenses" from the most recent Prospectus, as supplemented, and may differ from other expense ratios disclosed in this report.
3. Prior to June 30, 2020, the maximum initial sales charge was 5.50%, which is reflected in the applicable average annual total return figures shown.
4. Class B shares are closed to all new purchases as well as additional investments by existing Class B shareholders.

The footnotes on the next page are an integral part of the table and graph and should be carefully read in conjunction with them.

Benchmark Performance*	Six Months¹	One Year	Five Years	Ten Years
Russell 3000 [®] Index ²	21.09%	22.30%	12.43%	11.81%
Russell 1000 [®] Growth Index ³	23.56	31.80	16.46	15.48
S&P 500 [®] Index ⁴	20.98	22.66	13.19	12.41
Morningstar Large Growth Category Average ⁵	24.13	29.19	12.82	12.85

* Returns for indices reflect no deductions for fees, expenses or taxes, except for foreign withholding taxes where applicable. Results assume reinvestment of all dividends and capital gains. An investment cannot be made directly in an index.

1. Not annualized.
2. In accordance with new regulatory requirements, the Fund has selected the Russell 3000[®] Index, which represents a broad measure of market performance, as a replacement for the Russell 1000[®] Growth Index. The Russell 3000[®] Index measures the performance of the largest 3,000 U.S. companies representing approximately 98% of the investable U.S. equity market.
3. The Russell 1000[®] Growth Index, which is generally representative of the market sectors or types of investments in which the Fund invests, measures the performance of the large-cap growth segment of the U.S. equity universe. It includes those Russell 1000[®] Index companies with higher price-to-book ratios and higher forecasted growth values.
4. The S&P 500[®] Index, which represents a broad measure of market performance, is generally representative of the market sectors or types of investments in which the Fund invests. S&P[®] and S&P 500[®] are registered trademarks of Standard & Poor's Financial Services LLC. The S&P 500[®] Index is widely regarded as the standard index for measuring large-cap U.S. stock market performance.
5. The Morningstar Large Growth Category Average is representative of funds that invest primarily in big U.S. companies that are projected to grow faster than other large-cap stocks. Stocks in the top 70% of the capitalization of the U.S. equity market are defined as large cap. Growth is defined based on fast growth and high valuations. Most of these funds focus on companies in rapidly expanding industries. Results are based on average total returns of similar funds with all dividends and capital gain distributions reinvested.

The footnotes on the preceding page are an integral part of the table and graph and should be carefully read in conjunction with them.

Cost in Dollars of a \$1,000 Investment in MainStay Winslow Large Cap Growth Fund (Unaudited)

The example below is intended to describe the fees and expenses borne by shareholders during the six-month period from November 1, 2023 to April 30, 2024, and the impact of those costs on your investment.

Example

As a shareholder of the Fund you incur two types of costs: (1) transaction costs, including exchange fees and sales charges (loads) on purchases (as applicable), and (2) ongoing costs, including management fees, distribution and/or service (12b-1) fees and other Fund expenses (as applicable). This example is intended to help you understand your ongoing costs (in dollars) of investing in the Fund and to compare these costs with the ongoing costs of investing in other mutual funds. The example is based on an investment of \$1,000 made at the beginning of the six-month period and held for the entire period from November 1, 2023 to April 30, 2024.

This example illustrates your Fund's ongoing costs in two ways:

Actual Expenses

The second and third data columns in the table below provide information about actual account values and actual expenses. You may use the information in these columns, together with the amount you invested, to estimate the expenses that you paid during the six months ended April 30, 2024. Simply divide your account value by \$1,000 (for example, an \$8,600 account value divided by \$1,000 = 8.6), then multiply the

result by the number under the heading entitled "Expenses Paid During Period" to estimate the expenses you paid on your account during this period.

Hypothetical Example for Comparison Purposes

The fourth and fifth data columns in the table below provide information about hypothetical account values and hypothetical expenses based on the Fund's actual expense ratio and an assumed rate of return of 5% per year before expenses, which is not the Fund's actual return. The hypothetical account values and expenses may not be used to estimate the actual ending account balances or expenses you paid for the six-month period shown. You may use this information to compare the ongoing costs of investing in the Fund with the ongoing costs of investing in other mutual funds. To do so, compare this 5% hypothetical example with the 5% hypothetical examples that appear in the shareholder reports of the other mutual funds.

Please note that the expenses shown in the table are meant to highlight your ongoing costs only and do not reflect any transactional costs, such as exchange fees or sales charges (loads). Therefore, the fourth and fifth data columns of the table are useful in comparing ongoing costs only and will not help you determine the relative total costs of owning different funds. In addition, if these transactional costs were included, your costs would have been higher.

Share Class	Beginning Account Value 11/1/23	Ending Account Value (Based on Actual Returns and Expenses) 4/30/24	Expenses Paid During Period ¹	Ending Account Value (Based on Hypothetical 5% Annualized Return and Actual Expenses) 4/30/24	Expenses Paid During Period ¹	Net Expense Ratio During Period ²
Class A Shares	\$1,000.00	\$1,278.10	\$ 5.38	\$1,020.14	\$4.77	0.95%
Investor Class Shares	\$1,000.00	\$1,276.50	\$ 6.45	\$1,019.19	\$5.72	1.14%
Class B Shares	\$1,000.00	\$1,270.60	\$10.67	\$1,015.46	\$9.47	1.89%
Class C Shares	\$1,000.00	\$1,272.40	\$10.68	\$1,015.46	\$9.47	1.89%
Class I Shares	\$1,000.00	\$1,279.60	\$ 3.97	\$1,021.38	\$3.52	0.70%
Class R1 Shares	\$1,000.00	\$1,279.20	\$ 4.53	\$1,020.88	\$4.02	0.80%
Class R2 Shares	\$1,000.00	\$1,277.80	\$ 5.95	\$1,019.64	\$5.27	1.05%
Class R3 Shares	\$1,000.00	\$1,277.50	\$ 7.36	\$1,018.40	\$6.52	1.30%
Class R6 Shares	\$1,000.00	\$1,280.40	\$ 3.52	\$1,021.78	\$3.12	0.62%
SIMPLE Class Shares	\$1,000.00	\$1,276.50	\$ 6.62	\$1,019.04	\$5.87	1.17%

1. Expenses are equal to the Fund's annualized expense ratio of each class multiplied by the average account value over the period, divided by 366 and multiplied by 182 (to reflect the six-month period). The table above represents the actual expenses incurred during the six-month period. In addition to the fees and expenses which the Fund bears directly, it also indirectly bears a pro rata share of the fees and expenses of the underlying funds in which it invests. Such indirect expenses are not included in the above-reported expense figures.
2. Expenses are equal to the Fund's annualized expense ratio to reflect the six-month period.

Industry Composition as of April 30, 2024 (Unaudited)

Software	22.1%	Pharmaceuticals	1.9%
Semiconductors & Semiconductor Equipment	15.9	Building Products	1.8
Interactive Media & Services	9.3	Machinery	1.7
Health Care Equipment & Supplies	8.1	Specialty Retail	1.7
Broadline Retail	7.4	Health Care Providers & Services	1.5
Technology Hardware, Storage & Peripherals	5.2	Consumer Staples Distribution & Retail	1.2
Hotels, Restaurants & Leisure	4.4	Aerospace & Defense	1.2
Financial Services	3.1	IT Services	1.0
Entertainment	2.9	Short-Term Investments	0.8
Ground Transportation	2.6	Other Assets, Less Liabilities	-0.2
Chemicals	2.3		<u>100.0%</u>
Electrical Equipment	2.1		
Capital Markets	2.0		

See Portfolio of Investments beginning on page 9 for specific holdings within these categories. The Fund's holdings are subject to change.

Top Ten Holdings and/or Issuers Held as of April 30, 2024 (excluding short-term investments)
(Unaudited)

1. Microsoft Corp.	6. Meta Platforms, Inc., Class A
2. NVIDIA Corp.	7. Broadcom, Inc.
3. Amazon.com, Inc.	8. Intuitive Surgical, Inc.
4. Alphabet, Inc.	9. Adobe, Inc.
5. Apple, Inc.	10. Salesforce, Inc.

Portfolio of Investments April 30, 2024^{†^}(Unaudited)

	Shares	Value
Common Stocks 99.4%		
Aerospace & Defense 1.2%		
General Electric Co.	1,030,600	\$ 166,771,692
Broadline Retail 7.4%		
Amazon.com, Inc. (a)	5,882,200	1,029,385,000
Building Products 1.8%		
Trane Technologies plc	786,460	249,575,216
Capital Markets 2.0%		
KKR & Co., Inc.	3,021,300	281,192,391
Chemicals 2.3%		
Ecolab, Inc.	767,500	173,570,125
Linde plc	336,830	148,528,557
		322,098,682
Consumer Staples Distribution & Retail 1.2%		
Costco Wholesale Corp.	231,700	167,495,930
Electrical Equipment 2.1%		
AMETEK, Inc.	870,200	151,989,132
Vertiv Holdings Co., Class A	1,553,600	144,484,800
		296,473,932
Entertainment 2.9%		
Netflix, Inc. (a)	350,400	192,944,256
Spotify Technology SA (a)	760,000	213,134,400
		406,078,656
Financial Services 3.1%		
Mastercard, Inc., Class A	466,200	210,349,440
Visa, Inc., Class A	833,200	223,805,852
		434,155,292
Ground Transportation 2.6%		
Old Dominion Freight Line, Inc.	772,800	140,425,488
Uber Technologies, Inc. (a)	3,365,100	223,005,177
		363,430,665
Health Care Equipment & Supplies 8.1%		
Abbott Laboratories	1,382,000	146,450,540
Boston Scientific Corp. (a)	2,797,100	201,027,577
Edwards Lifesciences Corp. (a)	2,751,700	232,986,439
IDEXX Laboratories, Inc. (a)	395,900	195,083,684
Intuitive Surgical, Inc. (a)	982,390	364,093,382
		1,139,641,622

	Shares	Value
Health Care Providers & Services 1.5%		
UnitedHealth Group, Inc.	441,000	\$ 213,311,700
Hotels, Restaurants & Leisure 4.4%		
Booking Holdings, Inc.	75,000	258,902,250
Chipotle Mexican Grill, Inc. (a)	65,870	208,122,852
Hilton Worldwide Holdings, Inc.	725,200	143,067,456
		610,092,558
Interactive Media & Services 9.3%		
Alphabet, Inc. (a)		
Class A	2,463,220	400,962,952
Class C	2,252,920	370,920,749
Meta Platforms, Inc., Class A	1,235,900	531,647,103
		1,303,530,804
IT Services 1.0%		
Accenture plc, Class A	479,100	144,165,981
Machinery 1.7%		
Parker-Hannifin Corp.	426,500	232,404,115
Pharmaceuticals 1.9%		
Eli Lilly & Co.	348,200	271,979,020
Semiconductors & Semiconductor Equipment 15.9%		
Advanced Micro Devices, Inc. (a)	783,900	124,154,082
ASML Holding NV (Registered) (b)	258,170	225,245,580
Broadcom, Inc.	369,300	480,189,711
Lam Research Corp.	359,690	321,710,333
NVIDIA Corp.	1,239,850	1,071,255,197
		2,222,554,903
Software 22.1%		
Adobe, Inc. (a)	777,700	359,942,891
Intuit, Inc.	480,100	300,360,162
Microsoft Corp.	3,900,230	1,518,476,546
Salesforce, Inc.	1,330,400	357,797,776
ServiceNow, Inc. (a)	312,710	216,811,224
Synopsys, Inc. (a)	343,400	182,204,606
Workday, Inc., Class A (a)	644,200	157,655,066
		3,093,248,271
Specialty Retail 1.7%		
O'Reilly Automotive, Inc. (a)	228,520	231,550,175

The notes to the financial statements are an integral part of, and should be read in conjunction with, the financial statements.

Portfolio of Investments April 30, 2024^{†^}(Unaudited) (continued)

	Shares	Value
Common Stocks (continued)		
Technology Hardware, Storage & Peripherals 5.2%		
Apple, Inc.	4,257,180	\$ 725,125,469
Total Common Stocks		
(Cost \$8,771,988,467)		<u>13,904,262,074</u>
Short-Term Investments 0.8%		
Affiliated Investment Company 0.5%		
MainStay U.S. Government Liquidity		
Fund, 5.242% (c)(d)	71,866,969	<u>71,866,969</u>
Unaffiliated Investment Companies 0.3%		
BlackRock Liquidity FedFund,		
5.303% (d)(e)	10,000,000	10,000,000
Fidelity Government Portfolio,		
5.296% (d)(e)	10,000,000	10,000,000
Goldman Sachs Financial Square		
Government Fund, 5.307% (d)(e)	5,000,000	5,000,000
Invesco Government & Agency		
Portfolio, 5.309% (d)(e)	10,750,400	10,750,400
RBC U.S. Government Money Market		
Fund, 5.297% (d)(e)	5,000,000	5,000,000
Wells Fargo Government Money		
Market Fund, 5.30% (d)(e)	5,000,000	<u>5,000,000</u>
		<u>45,750,400</u>
Total Short-Term Investments		
(Cost \$117,617,369)		<u>117,617,369</u>
Total Investments		
(Cost \$8,889,605,836)	100.2%	14,021,879,443
Other Assets, Less Liabilities	<u>(0.2)</u>	<u>(30,916,582)</u>
Net Assets	<u>100.0%</u>	<u>\$ 13,990,962,861</u>

† Percentages indicated are based on Fund net assets.

^ Industry classifications may be different than those used for compliance monitoring purposes.

(a) Non-income producing security.

(b) All or a portion of this security was held on loan. As of April 30, 2024, the aggregate market value of securities on loan was \$43,012,771. The Fund received cash collateral with a value of \$45,750,400. (See Note 2(G))

(c) As of April 30, 2024, the Fund's ownership exceeds 5% of the outstanding shares of the Underlying Fund's share class.

(d) Current yield as of April 30, 2024.

(e) Represents a security purchased with cash collateral received for securities on loan.

The notes to the financial statements are an integral part of, and should be read in conjunction with, the financial statements.

Investments in Affiliates (in 000's)

Investments in issuers considered to be affiliate(s) of the Fund during the six-month period ended April 30, 2024 for purposes of Section 2(a)(3) of the Investment Company Act of 1940, as amended, were as follows:

Affiliated Investment Companies	Value, Beginning of Period	Purchases at Cost	Proceeds from Sales	Net Realized Gain/(Loss) on Sales	Change in Unrealized Appreciation/ (Depreciation)	Value, End of Period	Dividend Income	Other Distributions	Shares End of Period
MainStay U.S. Government Liquidity Fund	\$ 38,040	\$ 1,531,857	\$ (1,498,030)	\$ —	\$ —	\$ 71,867	\$ 2,035	\$ —	71,867

The following is a summary of the fair valuations according to the inputs used as of April 30, 2024, for valuing the Fund's assets:

Description	Quoted Prices in Active Markets for Identical Assets (Level 1)	Significant Other Observable Inputs (Level 2)	Significant Unobservable Inputs (Level 3)	Total
Asset Valuation Inputs				
Investments in Securities (a)				
Common Stocks	\$ 13,904,262,074	\$ —	\$ —	\$ 13,904,262,074
Short-Term Investments				
Affiliated Investment Company	71,866,969	—	—	71,866,969
Unaffiliated Investment Companies	45,750,400	—	—	45,750,400
Total Short-Term Investments	117,617,369	—	—	117,617,369
Total Investments in Securities	\$ 14,021,879,443	\$ —	\$ —	\$ 14,021,879,443

(a) For a complete listing of investments and their industries, see the Portfolio of Investments.

Statement of Assets and Liabilities as of April 30, 2024 (Unaudited)

Assets

Investment in unaffiliated securities, at value (identified cost \$8,817,738,867) including securities on loan of \$43,012,771	\$13,950,012,474
Investment in affiliated investment companies, at value (identified cost \$71,866,969)	71,866,969
Receivables:	
Fund shares sold	28,170,142
Dividends	2,816,265
Securities lending	4,498
Other assets	319,847
Total assets	14,053,190,195

Liabilities

Cash collateral received for securities on loan	45,750,400
Payables:	
Manager (See Note 3)	7,183,891
Fund shares redeemed	7,098,581
Transfer agent (See Note 3)	1,418,041
NYLIFE Distributors (See Note 3)	516,963
Professional fees	184,803
Custodian	66,648
Accrued expenses	8,007
Total liabilities	62,227,334
Net assets	\$13,990,962,861

Composition of Net Assets

Shares of beneficial interest outstanding (par value of \$.01 per share) unlimited number of shares authorized	\$ 12,495,261
Additional paid-in-capital	7,405,187,139
	7,417,682,400
Total distributable earnings (loss)	6,573,280,461
Net assets	\$13,990,962,861

Class A

Net assets applicable to outstanding shares	\$1,484,062,593
Shares of beneficial interest outstanding	153,979,743
Net asset value per share outstanding	\$ 9.64
Maximum sales charge (5.50% of offering price)	0.56
Maximum offering price per share outstanding	\$ 10.20

Investor Class

Net assets applicable to outstanding shares	\$ 66,159,522
Shares of beneficial interest outstanding	7,175,479
Net asset value per share outstanding	\$ 9.22
Maximum sales charge (5.00% of offering price)	0.49
Maximum offering price per share outstanding	\$ 9.71

Class B

Net assets applicable to outstanding shares	\$ 4,626,871
Shares of beneficial interest outstanding	866,001
Net asset value and offering price per share outstanding	\$ 5.34

Class C

Net assets applicable to outstanding shares	\$ 41,470,940
Shares of beneficial interest outstanding	7,803,143
Net asset value and offering price per share outstanding	\$ 5.31

Class I

Net assets applicable to outstanding shares	\$7,243,586,558
Shares of beneficial interest outstanding	628,773,501
Net asset value and offering price per share outstanding	\$ 11.52

Class R1

Net assets applicable to outstanding shares	\$1,018,042,918
Shares of beneficial interest outstanding	93,915,657
Net asset value and offering price per share outstanding	\$ 10.84

Class R2

Net assets applicable to outstanding shares	\$ 134,902,549
Shares of beneficial interest outstanding	14,255,926
Net asset value and offering price per share outstanding	\$ 9.46

Class R3

Net assets applicable to outstanding shares	\$ 42,585,169
Shares of beneficial interest outstanding	5,208,985
Net asset value and offering price per share outstanding	\$ 8.18

Class R6

Net assets applicable to outstanding shares	\$3,954,846,010
Shares of beneficial interest outstanding	337,473,247
Net asset value and offering price per share outstanding	\$ 11.72

SIMPLE Class

Net assets applicable to outstanding shares	<u>\$679,731</u>
Shares of beneficial interest outstanding	<u>74,456</u>
Net asset value and offering price per share outstanding	<u>\$ 9.13</u>

Statement of Operations for the six months ended April 30, 2024 (Unaudited)

Investment Income (Loss)

Income

Dividends-unaffiliated (net of foreign tax withholding of \$274,276)	\$ 38,235,730
Dividends-affiliated	2,035,323
Securities lending, net	<u>6,592</u>
Total income	<u>40,277,645</u>

Expenses

Manager (See Note 3)	42,940,783
Transfer agent (See Note 3)	4,050,569
Distribution/Service—Class A (See Note 3)	1,764,946
Distribution/Service—Investor Class (See Note 3)	88,314
Distribution/Service—Class B (See Note 3)	30,330
Distribution/Service—Class C (See Note 3)	217,381
Distribution/Service—Class R2 (See Note 3)	165,458
Distribution/Service—Class R3 (See Note 3)	103,839
Distribution/Service—SIMPLE Class (See Note 3)	1,427
Shareholder service (See Note 3)	590,866
Professional fees	390,576
Trustees	159,359
Registration	120,603
Shareholder communication	90,188
Custodian	70,721
Miscellaneous	<u>246,889</u>
Total expenses before waiver/reimbursement	51,032,249
Expense waiver/reimbursement from Manager (See Note 3)	<u>(526,884)</u>
Net expenses	<u>50,505,365</u>

Net investment income (loss)	<u>(10,227,720)</u>
------------------------------	---------------------

Realized and Unrealized Gain (Loss)

Net realized gain (loss) on unaffiliated investments	<u>1,500,751,386</u>
Net change in unrealized appreciation (depreciation) on unaffiliated investments	<u>1,786,433,267</u>
Net realized and unrealized gain (loss)	<u>3,287,184,653</u>
Net increase (decrease) in net assets resulting from operations	<u>\$3,276,956,933</u>

Statements of Changes in Net Assets

for the six months ended April 30, 2024 (Unaudited) and the year ended October 31, 2023

	Six months ended April 30, 2024	Year ended October 31, 2023
Increase (Decrease) in Net Assets		
Operations:		
Net investment income (loss)	\$ (10,227,720)	\$ (19,046,995)
Net realized gain (loss)	1,500,751,386	1,300,340,950
Net change in unrealized appreciation (depreciation)	1,786,433,267	841,465,661
Net increase (decrease) in net assets resulting from operations	3,276,956,933	2,122,759,616
Distributions to shareholders:		
Class A	(130,082,500)	(137,076,160)
Investor Class	(7,244,475)	(8,619,202)
Class B	(1,132,819)	(1,794,965)
Class C	(7,147,012)	(8,883,388)
Class I	(595,283,038)	(674,639,763)
Class R1	(86,798,156)	(86,323,034)
Class R2	(12,504,737)	(13,562,024)
Class R3	(4,536,383)	(5,552,262)
Class R6	(313,598,647)	(369,612,028)
SIMPLE Class	(46,846)	(30,895)
Total distributions to shareholders	(1,158,374,613)	(1,306,093,721)
Capital share transactions:		
Net proceeds from sales of shares	1,074,078,515	1,751,093,329
Net asset value of shares issued to shareholders in reinvestment of distributions	1,075,112,615	1,210,855,286
Cost of shares redeemed	(2,205,593,960)	(3,204,378,874)
Increase (decrease) in net assets derived from capital share transactions	(56,402,830)	(242,430,259)
Net increase (decrease) in net assets	2,062,179,490	574,235,636
Net Assets		
Beginning of period	11,928,783,371	11,354,547,735
End of period	\$13,990,962,861	\$11,928,783,371

The notes to the financial statements are an integral part of, and should be read in conjunction with, the financial statements.

Financial Highlights selected per share data and ratios

Class A	Six months ended April 30, 2024*	Year Ended October 31,				
		2023	2022	2021	2020	2019
Net asset value at beginning of period	\$ 8.39	\$ 8.03	\$ 14.92	\$ 11.08	\$ 9.59	\$ 9.95
Net investment income (loss) (a)	(0.02)	(0.03)	(0.04)	(0.07)	(0.03)	(0.02)
Net realized and unrealized gain (loss)	2.22	1.44	(3.74)	4.55	2.58	1.48
Total from investment operations	2.20	1.41	(3.78)	4.48	2.55	1.46
Less distributions:						
From net realized gain on investments	(0.95)	(1.05)	(3.11)	(0.64)	(1.06)	(1.82)
Net asset value at end of period	\$ 9.64	\$ 8.39	\$ 8.03	\$ 14.92	\$ 11.08	\$ 9.59
Total investment return (b)	27.81%	19.57%	(31.71)%	42.16%	29.44%	17.05%
Ratios (to average net assets)/Supplemental Data:						
Net investment income (loss)	(0.38)%††	(0.39)%	(0.37)%	(0.53)%	(0.31)%	(0.20)%
Net expenses (c)	0.95%††	0.98%	0.96%	0.93%	0.97%	0.99%
Expenses (before waiver/reimbursement) (c)	0.95%††(d)	0.98%(d)	0.96%(d)	0.94%	0.97%	0.99%
Portfolio turnover rate	37%	81%	77%	66%	44%	54%
Net assets at end of period (in 000's)	\$ 1,484,063	\$ 1,153,265	\$ 1,065,870	\$ 1,745,833	\$ 1,341,381	\$ 1,008,608

* Unaudited.

†† Annualized.

(a) Per share data based on average shares outstanding during the period.

(b) Total investment return is calculated exclusive of sales charges and assumes the reinvestment of dividends and distributions. For periods of less than one year, total return is not annualized.

(c) In addition to the fees and expenses which the Fund bears directly, it also indirectly bears a pro-rata share of the fees and expenses of the underlying funds in which it invests. Such indirect expenses are not included in the above expense ratios.

(d) Expense waiver/reimbursement less than 0.01%.

Investor Class	Six months ended April 30, 2024*	Year Ended October 31,				
		2023	2022	2021	2020	2019
Net asset value at beginning of period	\$ 8.07	\$ 7.78	\$ 14.56	\$ 10.84	\$ 9.42	\$ 9.81
Net investment income (loss) (a)	(0.03)	(0.05)	(0.05)	(0.08)	(0.04)	(0.03)
Net realized and unrealized gain (loss)	2.13	1.39	(3.62)	4.44	2.52	1.46
Total from investment operations	2.10	1.34	(3.67)	4.36	2.48	1.43
Less distributions:						
From net realized gain on investments	(0.95)	(1.05)	(3.11)	(0.64)	(1.06)	(1.82)
Net asset value at end of period	\$ 9.22	\$ 8.07	\$ 7.78	\$ 14.56	\$ 10.84	\$ 9.42
Total investment return (b)	27.65%	19.26%	(31.75)%	41.98%	29.19%	16.96%
Ratios (to average net assets)/Supplemental Data:						
Net investment income (loss)	(0.56)%††	(0.59)%	(0.52)%	(0.67)%	(0.43)%	(0.31)%
Net expenses (c)	1.14%††	1.19%	1.11%	1.08%	1.10%	1.09%
Expenses (before waiver/reimbursement) (c)	1.14%††(d)	1.19%(d)	1.11%(d)	1.09%	1.10%	1.10%
Portfolio turnover rate	37%	81%	77%	66%	44%	54%
Net assets at end of period (in 000's)	\$ 66,160	\$ 61,360	\$ 64,065	\$ 106,354	\$ 110,831	\$ 109,236

* Unaudited.

†† Annualized.

(a) Per share data based on average shares outstanding during the period.

(b) Total investment return is calculated exclusive of sales charges and assumes the reinvestment of dividends and distributions. For periods of less than one year, total return is not annualized.

(c) In addition to the fees and expenses which the Fund bears directly, it also indirectly bears a pro-rata share of the fees and expenses of the underlying funds in which it invests. Such indirect expenses are not included in the above expense ratios.

(d) Expense waiver/reimbursement less than 0.01%.

Financial Highlights selected per share data and ratios

Class B	Six months ended April 30, 2024*	Year Ended October 31,				
		2023	2022	2021	2020	2019
Net asset value at beginning of period	\$ 5.05	\$ 5.28	\$ 10.96	\$ 8.37	\$ 7.55	\$ 8.26
Net investment income (loss) (a)	(0.03)	(0.06)	(0.08)	(0.13)	(0.09)	(0.08)
Net realized and unrealized gain (loss)	1.27	0.88	(2.49)	3.36	1.97	1.19
Total from investment operations	1.24	0.82	(2.57)	3.23	1.88	1.11
Less distributions:						
From net realized gain on investments	(0.95)	(1.05)	(3.11)	(0.64)	(1.06)	(1.82)
Net asset value at end of period	\$ 5.34	\$ 5.05	\$ 5.28	\$ 10.96	\$ 8.37	\$ 7.55
Total investment return (b)	27.06%	18.40%	(32.29)%	40.80%	28.37%	15.96%
Ratios (to average net assets)/Supplemental Data:						
Net investment income (loss)	(1.28)%††	(1.32)%	(1.27)%	(1.42)%	(1.17)%	(1.05)%
Net expenses (c)	1.89%††	1.94%	1.86%	1.83%	1.85%	1.84%
Expenses (before waiver/reimbursement) (c)	1.89%††(d)	1.94%(d)	1.86%(d)	1.84%	1.85%	1.85%
Portfolio turnover rate	37%	81%	77%	66%	44%	54%
Net assets at end of period (in 000's)	\$ 4,627	\$ 6,235	\$ 9,408	\$ 20,533	\$ 20,172	\$ 21,015

* Unaudited.

†† Annualized.

(a) Per share data based on average shares outstanding during the period.

(b) Total investment return is calculated exclusive of sales charges and assumes the reinvestment of dividends and distributions. For periods of less than one year, total return is not annualized.

(c) In addition to the fees and expenses which the Fund bears directly, it also indirectly bears a pro-rata share of the fees and expenses of the underlying funds in which it invests. Such indirect expenses are not included in the above expense ratios.

(d) Expense waiver/reimbursement less than 0.01%.

Class C	Six months ended April 30, 2024*	Year Ended October 31,				
		2023	2022	2021	2020	2019
Net asset value at beginning of period	\$ 5.02	\$ 5.26	\$ 10.93	\$ 8.35	\$ 7.53	\$ 8.25
Net investment income (loss) (a)	(0.03)	(0.07)	(0.08)	(0.13)	(0.09)	(0.07)
Net realized and unrealized gain (loss)	1.27	0.88	(2.48)	3.35	1.97	1.17
Total from investment operations	1.24	0.81	(2.56)	3.22	1.88	1.10
Less distributions:						
From net realized gain on investments	(0.95)	(1.05)	(3.11)	(0.64)	(1.06)	(1.82)
Net asset value at end of period	\$ 5.31	\$ 5.02	\$ 5.26	\$ 10.93	\$ 8.35	\$ 7.53
Total investment return (b)	27.24%	18.24%	(32.29)%	40.77%	28.46%	15.97%
Ratios (to average net assets)/Supplemental Data:						
Net investment income (loss)	(1.31)%††	(1.34)%	(1.27)%	(1.42)%	(1.17)%	(1.04)%
Net expenses (c)	1.89%††	1.94%	1.86%	1.83%	1.85%	1.84%
Expenses (before waiver/reimbursement) (c)	1.89%††(d)	1.94%(d)	1.86%(d)	1.84%	1.85%	1.85%
Portfolio turnover rate	37%	81%	77%	66%	44%	54%
Net assets at end of period (in 000's)	\$ 41,471	\$ 38,923	\$ 46,833	\$ 90,377	\$ 95,761	\$ 131,945

* Unaudited.

†† Annualized.

(a) Per share data based on average shares outstanding during the period.

(b) Total investment return is calculated exclusive of sales charges and assumes the reinvestment of dividends and distributions. For periods of less than one year, total return is not annualized.

(c) In addition to the fees and expenses which the Fund bears directly, it also indirectly bears a pro-rata share of the fees and expenses of the underlying funds in which it invests. Such indirect expenses are not included in the above expense ratios.

(d) Expense waiver/reimbursement less than 0.01%.

The notes to the financial statements are an integral part of, and should be read in conjunction with, the financial statements.

Financial Highlights selected per share data and ratios

Class I	Six months ended April 30, 2024*	Year Ended October 31,				
		2023	2022	2021	2020	2019
Net asset value at beginning of period	\$ 9.85	\$ 9.24	\$ 16.66	\$ 12.28	\$ 10.49	\$ 10.69
Net investment income (loss) (a)	(0.01)	(0.01)	(0.01)	(0.04)	(0.01)	0.00‡
Net realized and unrealized gain (loss)	2.63	1.68	(4.30)	5.06	2.86	1.62
Total from investment operations	2.62	1.67	(4.31)	5.02	2.85	1.62
Less distributions:						
From net investment income	—	(0.01)	—	—	—	—
From net realized gain on investments	(0.95)	(1.05)	(3.11)	(0.64)	(1.06)	(1.82)
Total distributions	(0.95)	(1.06)	(3.11)	(0.64)	(1.06)	(1.82)
Net asset value at end of period	\$ 11.52	\$ 9.85	\$ 9.24	\$ 16.66	\$ 12.28	\$ 10.49
Total investment return (b)	27.96%	19.89%	(31.55)%	42.46%	29.80%	17.29%
Ratios (to average net assets)/Supplemental Data:						
Net investment income (loss)	(0.12)%††	(0.14)%	(0.11)%	(0.28)%	(0.06)%	0.05%
Net expenses (c)	0.70%††	0.73%	0.71%	0.68%	0.72%	0.74%
Expenses (before waiver/reimbursement) (c)	0.70%††(d)	0.73%(d)	0.71%(d)	0.69%	0.72%	0.74%
Portfolio turnover rate	37%	81%	77%	66%	44%	54%
Net assets at end of period (in 000's)	\$ 7,243,587	\$ 6,217,494	\$ 6,016,574	\$ 8,434,291	\$ 6,824,224	\$ 6,080,320

* Unaudited.

‡ Less than one cent per share.

†† Annualized.

(a) Per share data based on average shares outstanding during the period.

(b) Total investment return is calculated exclusive of sales charges and assumes the reinvestment of dividends and distributions. Class I shares are not subject to sales charges. For periods of less than one year, total return is not annualized.

(c) In addition to the fees and expenses which the Fund bears directly, it also indirectly bears a pro-rata share of the fees and expenses of the underlying funds in which it invests. Such indirect expenses are not included in the above expense ratios.

(d) Expense waiver/reimbursement less than 0.01%.

Financial Highlights selected per share data and ratios

Class R1	Six months ended April 30, 2024*	Year Ended October 31,				
		2023	2022	2021	2020	2019
Net asset value at beginning of period	\$ 9.32	\$ 8.80	\$ 16.03	\$ 11.85	\$ 10.17	\$ 10.43
Net investment income (loss) (a)	(0.01)	(0.02)	(0.02)	(0.05)	(0.02)	(0.00)‡
Net realized and unrealized gain (loss)	2.48	1.59	(4.10)	4.87	2.76	1.56
Total from investment operations	2.47	1.57	(4.12)	4.82	2.74	1.56
Less distributions:						
From net investment income	—	(0.00)‡	—	—	—	—
From net realized gain on investments	(0.95)	(1.05)	(3.11)	(0.64)	(1.06)	(1.82)
Total distributions	(0.95)	(1.05)	(3.11)	(0.64)	(1.06)	(1.82)
Net asset value at end of period	\$ 10.84	\$ 9.32	\$ 8.80	\$ 16.03	\$ 11.85	\$ 10.17
Total investment return (b)	27.92%	19.73%	(31.62)%	42.30%	29.64%	17.25%
Ratios (to average net assets)/Supplemental Data:						
Net investment income (loss)	(0.22)%††	(0.25)%	(0.22)%	(0.38)%	(0.15)%	(0.04)%
Net expenses (c)	0.80%††	0.83%	0.81%	0.78%	0.82%	0.84%
Expenses (before waiver/reimbursement) (c)	0.80%††(d)	0.83%(d)	0.81%(d)	0.79%	0.82%	0.84%
Portfolio turnover rate	37%	81%	77%	66%	44%	54%
Net assets at end of period (in 000's)	\$ 1,018,043	\$ 850,155	\$ 721,142	\$ 1,207,903	\$ 914,359	\$ 919,236

* Unaudited.

‡ Less than one cent per share.

†† Annualized.

(a) Per share data based on average shares outstanding during the period.

(b) Total investment return is calculated exclusive of sales charges and assumes the reinvestment of dividends and distributions. Class R1 shares are not subject to sales charges. For periods of less than one year, total return is not annualized.

(c) In addition to the fees and expenses which the Fund bears directly, it also indirectly bears a pro-rata share of the fees and expenses of the underlying funds in which it invests. Such indirect expenses are not included in the above expense ratios.

(d) Expense waiver/reimbursement less than 0.01%.

Financial Highlights selected per share data and ratios

Class R2	Six months ended April 30, 2024*	Year Ended October 31,				
		2023	2022	2021	2020	2019
Net asset value at beginning of period	\$ 8.25	\$ 7.93	\$ 14.78	\$ 10.99	\$ 9.53	\$ 9.90
Net investment income (loss) (a)	(0.02)	(0.04)	(0.04)	(0.08)	(0.04)	(0.03)
Net realized and unrealized gain (loss)	2.18	1.41	(3.70)	4.51	2.56	1.48
Total from investment operations	2.16	1.37	(3.74)	4.43	2.52	1.45
Less distributions:						
From net realized gain on investments	(0.95)	(1.05)	(3.11)	(0.64)	(1.06)	(1.82)
Net asset value at end of period	\$ 9.46	\$ 8.25	\$ 7.93	\$ 14.78	\$ 10.99	\$ 9.53
Total investment return (b)	27.78%	19.29%	(31.74)%	42.04%	29.29%	16.89%
Ratios (to average net assets)/Supplemental Data:						
Net investment income (loss)	(0.47)%††	(0.49)%	(0.47)%	(0.63)%	(0.40)%	(0.29)%
Net expenses (c)	1.05%††	1.08%	1.06%	1.03%	1.07%	1.09%
Expenses (before waiver/reimbursement) (c)	1.05%††(d)	1.08%(d)	1.06%(d)	1.04%	1.07%	1.09%
Portfolio turnover rate	37%	81%	77%	66%	44%	54%
Net assets at end of period (in 000's)	\$ 134,903	\$ 111,520	\$ 106,414	\$ 188,790	\$ 159,297	\$ 163,288

* Unaudited.

†† Annualized.

(a) Per share data based on average shares outstanding during the period.

(b) Total investment return is calculated exclusive of sales charges and assumes the reinvestment of dividends and distributions. Class R2 shares are not subject to sales charges. For periods of less than one year, total return is not annualized.

(c) In addition to the fees and expenses which the Fund bears directly, it also indirectly bears a pro-rata share of the fees and expenses of the underlying funds in which it invests. Such indirect expenses are not included in the above expense ratios.

(d) Expense waiver/reimbursement less than 0.01%.

Class R3	Six months ended April 30, 2024*	Year Ended October 31,				
		2023	2022	2021	2020	2019
Net asset value at beginning of period	\$ 7.25	\$ 7.10	\$ 13.60	\$ 10.19	\$ 8.93	\$ 9.41
Net investment income (loss) (a)	(0.03)	(0.05)	(0.06)	(0.10)	(0.06)	(0.05)
Net realized and unrealized gain (loss)	1.91	1.25	(3.33)	4.15	2.38	1.39
Total from investment operations	1.88	1.20	(3.39)	4.05	2.32	1.34
Less distributions:						
From net realized gain on investments	(0.95)	(1.05)	(3.11)	(0.64)	(1.06)	(1.82)
Net asset value at end of period	\$ 8.18	\$ 7.25	\$ 7.10	\$ 13.60	\$ 10.19	\$ 8.93
Total investment return (b)	27.75%	19.11%	(31.98)%	41.60%	28.99%	16.69%
Ratios (to average net assets)/Supplemental Data:						
Net investment income (loss)	(0.73)%††	(0.73)%	(0.72)%	(0.88)%	(0.65)%	(0.55)%
Net expenses (c)	1.30%††	1.33%	1.31%	1.28%	1.32%	1.34%
Expenses (before waiver/reimbursement) (c)	1.30%††(d)	1.33%(d)	1.31%(d)	1.29%	1.32%	1.34%
Portfolio turnover rate	37%	81%	77%	66%	44%	54%
Net assets at end of period (in 000's)	\$ 42,585	\$ 34,337	\$ 38,027	\$ 63,195	\$ 56,657	\$ 57,283

* Unaudited.

†† Annualized.

(a) Per share data based on average shares outstanding during the period.

(b) Total investment return is calculated exclusive of sales charges and assumes the reinvestment of dividends and distributions. Class R3 shares are not subject to sales charges. For periods of less than one year, total return is not annualized.

(c) In addition to the fees and expenses which the Fund bears directly, it also indirectly bears a pro-rata share of the fees and expenses of the underlying funds in which it invests. Such indirect expenses are not included in the above expense ratios.

(d) Expense waiver/reimbursement less than 0.01%.

Financial Highlights selected per share data and ratios

Class R6	Six months ended April 30, 2024*	Year Ended October 31,				
		2023	2022	2021	2020	2019
Net asset value at beginning of period	\$ 10.00	\$ 9.37	\$ 16.84	\$ 12.39	\$ 10.58	\$ 10.76
Net investment income (loss) (a)	(0.00)‡	(0.01)	(0.00)‡	(0.03)	0.00‡	0.01
Net realized and unrealized gain (loss)	2.67	1.71	(4.36)	5.12	2.88	1.63
Total from investment operations	2.67	1.70	(4.36)	5.09	2.88	1.64
Less distributions:						
From net investment income	—	(0.02)	—	—	(0.01)	—
From net realized gain on investments	(0.95)	(1.05)	(3.11)	(0.64)	(1.06)	(1.82)
Total distributions	(0.95)	(1.07)	(3.11)	(0.64)	(1.07)	(1.82)
Net asset value at end of period	\$ 11.72	\$ 10.00	\$ 9.37	\$ 16.84	\$ 12.39	\$ 10.58
Total investment return (b)	28.04%	19.95%	(31.50)%	42.65%	29.83%	17.49%
Ratios (to average net assets)/Supplemental Data:						
Net investment income (loss)	(0.05)%††	(0.05)%	(0.04)%	(0.22)%	0.02%	0.13%
Net expenses (c)	0.62%††	0.64%	0.63%	0.62%	0.64%	0.64%
Expenses (before waiver/reimbursement) (c)	0.63%††	0.64%(d)	0.64%(d)	0.63%	0.64%	0.64%
Portfolio turnover rate	37%	81%	77%	66%	44%	54%
Net assets at end of period (in 000's)	\$ 3,954,846	\$ 3,455,134	\$ 3,285,993	\$ 4,782,798	\$ 3,981,812	\$ 3,148,459

* Unaudited.

‡ Less than one cent per share.

†† Annualized.

(a) Per share data based on average shares outstanding during the period.

(b) Total investment return is calculated exclusive of sales charges and assumes the reinvestment of dividends and distributions. Class R6 shares are not subject to sales charges. For periods of less than one year, total return is not annualized.

(c) In addition to the fees and expenses which the Fund bears directly, it also indirectly bears a pro-rata share of the fees and expenses of the underlying funds in which it invests. Such indirect expenses are not included in the above expense ratios.

(d) Expense waiver/reimbursement less than 0.01%.

Financial Highlights selected per share data and ratios

SIMPLE Class	Six months ended April 30, 2024 [*]	Year Ended October 31,			August 31, 2020 [^] through October 31, 2020
		2023	2022	2021	
Net asset value at beginning of period	\$ 8.00	\$ 7.72	\$ 14.52	\$ 10.84	\$ 11.84 ^{**}
Net investment income (loss) (a)	(0.03)	(0.05)	(0.07)	(0.12)	(0.02)
Net realized and unrealized gain (loss)	2.11	1.38	(3.62)	4.44	(0.98)
Total from investment operations	2.08	1.33	(3.69)	4.32	(1.00)
Less distributions:					
From net realized gain on investments	(0.95)	(1.05)	(3.11)	(0.64)	—
Net asset value at end of period	\$ 9.13	\$ 8.00	\$ 7.72	\$ 14.52	\$ 10.84
Total investment return (b)	27.65%	19.28%	(32.02)%	41.59%	(8.45)%
Ratios (to average net assets)/Supplemental Data:					
Net investment income (loss)	(0.61)% ^{††}	(0.68)%	(0.77)%	(0.96)%	(1.00)% ^{††}
Net expenses (c)	1.17% ^{††}	1.24%	1.37%	1.33%	1.32% ^{††}
Expenses (before waiver/reimbursement) (c)	1.18% ^{††}	1.24%(d)	1.38%(d)	1.34%	1.33% ^{††}
Portfolio turnover rate	37%	81%	77%	66%	44%
Net assets at end of period (in 000's)	\$ 680	\$ 358	\$ 220	\$ 71	\$ 23

* Unaudited.

[^] Inception date.

^{**} Based on the net asset value of Investor Class as of August 31, 2020.

^{††} Annualized.

(a) Per share data based on average shares outstanding during the period.

(b) Total investment return is calculated exclusive of sales charges and assumes the reinvestment of dividends and distributions. SIMPLE Class shares are not subject to sales charges. For periods of less than one year, total return is not annualized.

(c) In addition to the fees and expenses which the Fund bears directly, it also indirectly bears a pro-rata share of the fees and expenses of the underlying funds in which it invests. Such indirect expenses are not included in the above expense ratios.

(d) Expense waiver/reimbursement less than 0.01%.

Notes to Financial Statements (Unaudited)

Note 1—Organization and Business

The MainStay Funds (the "Trust") was organized on January 9, 1986, as a Massachusetts business trust. The Trust is registered under the Investment Company Act of 1940, as amended (the "1940 Act"), as an open-end management investment company, and is comprised of eleven funds (collectively referred to as the "Funds"). These financial statements and notes relate to the MainStay Winslow Large Cap Growth Fund (the "Fund"), a "diversified" fund, as that term is defined in the 1940 Act, as interpreted or modified by regulatory authorities having jurisdiction, from time to time.

The following table lists the Fund's share classes that have been registered and commenced operations:

Class	Commenced Operations
Class A	July 1, 1995
Investor Class	February 28, 2008
Class B	April 1, 2005
Class C	April 1, 2005
Class I	April 1, 2005
Class R1	April 1, 2005
Class R2	April 1, 2005
Class R3	April 28, 2006
Class R6	June 17, 2013
SIMPLE Class	August 31, 2020

Class B shares of the MainStay Group of Funds are closed to all new purchases as well as additional investments by existing Class B shareholders. Existing Class B shareholders may continue to reinvest dividends and capital gains distributions, as well as exchange their Class B shares for Class B shares of other funds in the MainStay Group of Funds as permitted by the current exchange privileges. Class B shareholders continue to be subject to any applicable contingent deferred sales charge ("CDSC") at the time of redemption. All other features of the Class B shares, including but not limited to the fees and expenses applicable to Class B shares, remain unchanged. Unless redeemed, Class B shareholders will remain in Class B shares of their respective fund until the Class B shares are converted to Class A or Investor Class shares pursuant to the applicable conversion schedule.

Class A and Investor Class shares are offered at net asset value ("NAV") per share plus an initial sales charge. No initial sales charge applies to investments of \$1 million or more (and certain other qualified purchases) in Class A and Investor Class shares. However, a CDSC of 1.00% may be imposed on certain redemptions made within 18 months of the date of purchase on shares that were purchased without an initial sales charge. Class C shares are offered at NAV without an initial sales charge, although a 1.00% CDSC may be imposed on certain redemptions of such shares made within one year of the date of purchase of Class C shares. When Class B shares were offered, they were offered at NAV without an initial sales charge, although a CDSC that declines depending on the number of years a shareholder held its Class B shares may be imposed on certain redemptions of such shares made within six years of the date

of purchase of such shares. Class I, Class R1, Class R2, Class R3, Class R6 and SIMPLE Class shares are offered at NAV without a sales charge. Depending upon eligibility, Class B shares convert to either Class A or Investor Class shares at the end of the calendar quarter eight years after the date they were purchased. In addition, depending upon eligibility, Class C shares convert to either Class A or Investor Class shares at the end of the calendar quarter eight years after the date they were purchased. Additionally, Investor Class shares may convert automatically to Class A shares. SIMPLE Class shares convert to Class A shares, or Investor Class shares if you are not eligible to hold Class A shares, at the end of the calendar quarter, ten years after the date they were purchased. Share class conversions are based on the relevant NAVs of the two classes at the time of the conversion, and no sales load or other charge is imposed. Under certain circumstances and as may be permitted by the Trust's multiple class plan pursuant to Rule 18f-3 under the 1940 Act, specified share classes of the Fund may be converted to one or more other share classes of the Fund as disclosed in the capital share transactions within these Notes. The classes of shares have the same voting (except for issues that relate solely to one class), dividend, liquidation and other rights, and the same terms and conditions, except that under distribution plans pursuant to Rule 12b-1 under the 1940 Act, Class B and Class C shares are subject to higher distribution and/or service fees than Class A, Investor Class, Class R2, Class R3 and SIMPLE Class shares. Class I, Class R1 and Class R6 shares are not subject to a distribution and/or service fee. Class R1, Class R2 and Class R3 shares are subject to a shareholder service fee, which is in addition to fees paid under the distribution plans for Class R2 and Class R3 shares.

The Fund's investment objective is to seek long-term growth of capital.

Note 2—Significant Accounting Policies

The Fund is an investment company and accordingly follows the investment company accounting and reporting guidance of the Financial Accounting Standards Board ("FASB") Accounting Standards Codification *Topic 946 Financial Services—Investment Companies*. The Fund prepares its financial statements in accordance with generally accepted accounting principles ("GAAP") in the United States of America and follows the significant accounting policies described below.

(A) Securities Valuation. Investments are usually valued as of the close of regular trading on the New York Stock Exchange (the "Exchange") (usually 4:00 p.m. Eastern time) on each day the Fund is open for business ("valuation date").

Pursuant to Rule 2a-5 under the 1940 Act, the Board of Trustees of the Trust (the "Board") has designated New York Life Investment Management LLC ("New York Life Investments" or the "Manager") as its Valuation Designee (the "Valuation Designee"). The Valuation Designee is responsible for performing fair valuations relating to all investments in the Fund's portfolio for which market quotations are not readily available; periodically assessing and managing material valuation risks; establishing and applying fair value methodologies; testing fair valuation methodologies; evaluating and overseeing pricing services; ensuring

Notes to Financial Statements (Unaudited) (continued)

appropriate segregation of valuation and portfolio management functions; providing quarterly, annual and prompt reporting to the Board, as appropriate; identifying potential conflicts of interest; and maintaining appropriate records. The Valuation Designee has established a valuation committee ("Valuation Committee") to assist in carrying out the Valuation Designee's responsibilities and establish prices of securities for which market quotations are not readily available. The Fund's and the Valuation Designee's policies and procedures ("Valuation Procedures") govern the Valuation Designee's selection and application of methodologies for determining and calculating the fair value of Fund investments. The Valuation Designee may value the Fund's portfolio securities for which market quotations are not readily available and other Fund assets utilizing inputs from pricing services and other third-party sources. The Valuation Committee meets (in person, via electronic mail or via teleconference) on an ad-hoc basis to determine fair valuations and on a quarterly basis to review fair value events with respect to certain securities for which market quotations are not readily available, including valuation risks and back-testing results, and to preview reports to the Board.

The Valuation Committee establishes prices of securities for which market quotations are not readily available based on such methodologies and measurements on a regular basis after considering information that is reasonably available and deemed relevant by the Valuation Committee. The Board shall oversee the Valuation Designee and review fair valuation materials on a prompt, quarterly and annual basis and approve proposed revisions to the Valuation Procedures.

Investments for which market quotations are not readily available are valued at fair value as determined in good faith pursuant to the Valuation Procedures. A market quotation is readily available only when that quotation is a quoted price (unadjusted) in active markets for identical investments that the Fund can access at the measurement date, provided that a quotation will not be readily available if it is not reliable. "Fair value" is defined as the price the Fund would reasonably expect to receive upon selling an asset or liability in an orderly transaction to an independent buyer in the principal or most advantageous market for the asset or liability. Fair value measurements are determined within a framework that establishes a three-tier hierarchy that maximizes the use of observable market data and minimizes the use of unobservable inputs to establish a classification of fair value measurements for disclosure purposes. "Inputs" refer broadly to the assumptions that market participants would use in pricing the asset or liability, including assumptions about risk, such as the risk inherent in a particular valuation technique used to measure fair value using a pricing model and/or the risk inherent in the inputs for the valuation technique. Inputs may be observable or unobservable. Observable inputs reflect the assumptions market participants would use in pricing the asset or liability based on market data obtained from sources independent of the Fund. Unobservable inputs reflect the Fund's own assumptions about the assumptions market participants would use in pricing the asset or liability based on the information available. The inputs or methodology used for valuing assets or liabilities may not be an indication of the risks associated with investing in those assets or liabilities. The three-tier hierarchy of inputs is summarized below.

- Level 1—quoted prices (unadjusted) in active markets for an identical asset or liability
- Level 2—other significant observable inputs (including quoted prices for a similar asset or liability in active markets, interest rates and yield curves, prepayment speeds, credit risk, etc.)
- Level 3—significant unobservable inputs (including the Fund's own assumptions about the assumptions that market participants would use in measuring fair value of an asset or liability)

The level of an asset or liability within the fair value hierarchy is based on the lowest level of an input, both individually and in the aggregate, that is significant to the fair value measurement. The aggregate value by input level of the Fund's assets and liabilities as of April 30, 2024, is included at the end of the Portfolio of Investments.

The Fund may use third-party vendor evaluations, whose prices may be derived from one or more of the following standard inputs, among others:

• Broker/dealer quotes	• Benchmark securities
• Two-sided markets	• Reference data (corporate actions or material event notices)
• Bids/offers	• Monthly payment information
• Industry and economic events	• Reported trades

An asset or liability for which a market quotation is not readily available is valued by methods deemed reasonable in good faith by the Valuation Committee, following the Valuation Procedures to represent fair value. Under these procedures, the Valuation Designee generally uses a market-based approach which may use related or comparable assets or liabilities, recent transactions, market multiples, book values and other relevant information. The Valuation Designee may also use an income-based valuation approach in which the anticipated future cash flows of the asset or liability are discounted to calculate fair value. Discounts may also be applied due to the nature and/or duration of any restrictions on the disposition of the asset or liability. Fair value represents a good faith approximation of the value of a security. Fair value determinations involve the consideration of a number of subjective factors, an analysis of applicable facts and circumstances and the exercise of judgment. As a result, it is possible that the fair value for a security determined in good faith in accordance with the Valuation Procedures may differ from valuations for the same security determined for other funds using their own valuation procedures. Although the Valuation Procedures are designed to value a security at the price the Fund may reasonably expect to receive upon the security's sale in an orderly transaction, there can be no assurance that any fair value determination thereunder would, in fact, approximate the amount that the Fund would actually realize upon the sale of the security or the price at which the security would trade if a reliable market price were readily available. During the six-month period ended April 30, 2024, there were no material changes to the fair value methodologies.

Securities which may be valued in this manner include, but are not limited to: (i) a security for which trading has been halted or suspended or

otherwise does not have a readily available market quotation on a given day; (ii) a debt security that has recently gone into default and for which there is not a current market quotation; (iii) a security of an issuer that has entered into a restructuring; (iv) a security that has been delisted from a national exchange; (v) a security subject to trading collars for which no or limited trading takes place; and (vi) a security whose principal market has been temporarily closed at a time when, under normal conditions, it would be open. Securities valued in this manner are generally categorized as Level 2 or 3 in the hierarchy.

Certain securities held by the Fund may principally trade in foreign markets. Events may occur between the time the foreign markets close and the time at which the Fund's NAVs are calculated. These events may include, but are not limited to, situations relating to a single issuer in a market sector, significant fluctuations in U.S. or foreign markets, natural disasters, armed conflicts, governmental actions or other developments not tied directly to the securities markets. Should the Valuation Designee conclude that such events may have affected the accuracy of the last price of such securities reported on the local foreign market, the Valuation Designee may, pursuant to the Valuation Procedures, adjust the value of the local price to reflect the estimated impact on the price of such securities as a result of such events. In this instance, securities are generally categorized as Level 3 in the hierarchy. Additionally, certain foreign equity securities are also fair valued whenever the movement of a particular index exceeds certain thresholds. In such cases, the securities are fair valued by applying factors provided by a third-party vendor in accordance with the Valuation Procedures and are generally categorized as Level 2 in the hierarchy.

Equity securities, rights and warrants, if applicable, are valued at the last quoted sales prices as of the close of regular trading on the relevant exchange on each valuation date. Securities that are not traded on the valuation date are valued at the mean of the last quoted bid and ask prices. Prices are normally taken from the principal market in which each security trades. These securities are generally categorized as Level 1 in the hierarchy.

Investments in mutual funds, including money market funds, are valued at their respective NAVs at the close of business each day on the valuation date. These securities are generally categorized as Level 1 in the hierarchy.

Temporary cash investments acquired in excess of 60 days to maturity at the time of purchase are valued using the latest bid prices or using valuations based on a matrix system (which considers such factors as security prices, yields, maturities and ratings), both as furnished by independent pricing services. Temporary cash investments that mature in 60 days or less at the time of purchase ("Short-Term Investments") are valued using the amortized cost method of valuation, unless the use of such method would be inappropriate. The amortized cost method involves valuing a security at its cost on the date of purchase and thereafter assuming a constant amortization to maturity of the difference between such cost and the value on maturity date. Amortized cost approximates the current fair value of a security. Securities valued using the amortized

cost method are not valued using quoted prices in an active market and are generally categorized as Level 2 in the hierarchy.

The information above is not intended to reflect an exhaustive list of the methodologies that may be used to value portfolio investments. The Valuation Procedures permit the use of a variety of valuation methodologies in connection with valuing portfolio investments. The methodology used for a specific type of investment may vary based on the market data available or other considerations. The methodologies summarized above may not represent the specific means by which portfolio investments are valued on any particular business day.

(B) Income Taxes. The Fund's policy is to comply with the requirements of the Internal Revenue Code of 1986, as amended (the "Internal Revenue Code"), applicable to regulated investment companies and to distribute all of its taxable income to the shareholders of the Fund within the allowable time limits.

The Manager evaluates the Fund's tax positions to determine if the tax positions taken meet the minimum recognition threshold in connection with accounting for uncertainties in income tax positions taken or expected to be taken for the purposes of measuring and recognizing tax liabilities in the financial statements. Recognition of tax benefits of an uncertain tax position is permitted only to the extent the position is "more likely than not" to be sustained assuming examination by taxing authorities. The Manager analyzed the Fund's tax positions taken on federal, state and local income tax returns for all open tax years (for up to three tax years) and has concluded that no provisions for federal, state and local income tax are required in the Fund's financial statements. The Fund's federal, state and local income tax and federal excise tax returns for tax years for which the applicable statutes of limitations have not expired are subject to examination by the Internal Revenue Service and state and local departments of revenue.

(C) Dividends and Distributions to Shareholders. Dividends and distributions are recorded on the ex-dividend date. The Fund intends to declare and pay dividends from net investment income and distributions from net realized capital and currency gains, if any, at least annually. Unless a shareholder elects otherwise, all dividends and distributions are reinvested at NAV in the same class of shares of the Fund. Dividends and distributions to shareholders are determined in accordance with federal income tax regulations and may differ from determinations using GAAP.

(D) Security Transactions and Investment Income. The Fund records security transactions on the trade date. Realized gains and losses on security transactions are determined using the identified cost method. Dividend income is recognized on the ex-dividend date, net of any foreign tax withheld at the source, and interest income is accrued as earned using the effective interest rate method. Distributions received from real estate investment trusts may be classified as dividends, capital gains and/or return of capital.

Investment income and realized and unrealized gains and losses on investments of the Fund are allocated pro rata to the separate classes of

Notes to Financial Statements (Unaudited) (continued)

shares based upon their relative net assets on the date the income is earned or realized and unrealized gains and losses are incurred.

(E) Expenses. Expenses of the Trust are allocated to the individual Funds in proportion to the net assets of the respective Funds when the expenses are incurred, except where direct allocations of expenses can be made. Expenses (other than transfer agent expenses and fees incurred under the shareholder services plans and/or the distribution plans further discussed in Note 3(B)) are allocated to separate classes of shares pro rata based upon their relative net assets on the date the expenses are incurred. The expenses borne by the Fund, including those of related parties to the Fund, are shown in the Statement of Operations.

Additionally, the Fund may invest in mutual funds, which are subject to management fees and other fees that may cause the costs of investing in mutual funds to be greater than the costs of owning the underlying securities directly. These indirect expenses of mutual funds are not included in the amounts shown as expenses in the Statement of Operations or in the expense ratios included in the Financial Highlights.

(F) Use of Estimates. In preparing financial statements in conformity with GAAP, the Manager makes estimates and assumptions that affect the reported amounts and disclosures in the financial statements. Actual results could differ from those estimates and assumptions.

(G) Securities Lending. In order to realize additional income, the Fund may engage in securities lending, subject to the limitations set forth in the 1940 Act and relevant guidance by the staff of the Securities and Exchange Commission ("SEC"). If the Fund engages in securities lending, the Fund will lend through its custodian, JPMorgan Chase Bank, N.A., ("JPMorgan"), acting as securities lending agent on behalf of the Fund. Under the current arrangement, JPMorgan will manage the Fund's collateral in accordance with the securities lending agency agreement between the Fund and JPMorgan, and indemnify the Fund against counterparty risk. The loans will be collateralized by cash (which may be invested in a money market fund) and/or non-cash collateral (which may include U.S. Treasury securities and/or U.S. government agency securities issued or guaranteed by the United States government or its agencies or instrumentalities) at least equal at all times to the market value of the securities loaned. Non-cash collateral held at year end is segregated and cannot be transferred by the Fund. The Fund bears the risk of delay in recovery of, or loss of rights in, the securities loaned. The Fund may also record a realized gain or loss on securities deemed sold due to a borrower's inability to return securities on loan. The Fund bears the risk of any loss on investment of cash collateral. The Fund will receive compensation for lending its securities in the form of fees or it will retain a portion of interest earned on the investment of any cash collateral. The Fund will also continue to receive interest and dividends on the securities loaned and any gain or loss in the market price of the securities loaned that may occur during the term of the loan will be for the account of the Fund. Income earned from securities lending activities, if any, is reflected in the Statement of Operations.

(H) Indemnifications. Under the Trust's organizational documents, its officers and trustees are indemnified against certain liabilities that may arise out of performance of their duties to the Trust. Additionally, in the normal course of business, the Fund enters into contracts with third-party service providers that contain a variety of representations and warranties and that may provide general indemnifications. The Fund's maximum exposure under these arrangements is unknown, as this would involve future claims that may be made against the Fund that have not yet occurred. The Manager believes that the risk of loss in connection with these potential indemnification obligations is remote. However, there can be no assurance that material liabilities related to such obligations will not arise in the future, which could adversely impact the Fund.

Note 3—Fees and Related Party Transactions

(A) Manager and Subadvisor. New York Life Investments, a registered investment adviser and an indirect, wholly-owned subsidiary of New York Life Insurance Company ("New York Life"), serves as the Fund's Manager, pursuant to an Amended and Restated Management Agreement ("Management Agreement"). The Manager provides offices, conducts clerical, recordkeeping and bookkeeping services and keeps most of the financial and accounting records required to be maintained by the Fund. Except for the portion of salaries and expenses that are the responsibility of the Fund, the Manager pays the salaries and expenses of all personnel affiliated with the Fund and certain operational expenses of the Fund. The Fund reimburses New York Life Investments in an amount equal to the portion of the compensation of the Chief Compliance Officer attributable to the Fund. Winslow Capital Management, LLC ("Winslow" or the "Subadvisor"), a registered investment adviser, serves as the Subadvisor to the Fund and is responsible for the day-to-day portfolio management of the Fund. Pursuant to the terms of a Subadvisory Agreement ("Subadvisory Agreement") between New York Life Investments and Winslow, New York Life Investments pays for the services of the Subadvisor.

Pursuant to the Management Agreement, the Fund pays the Manager a monthly fee for the services performed and the facilities furnished at an annual rate of the Fund's average daily net assets as follows: 0.75% up to \$500 million; 0.725% from \$500 million to \$750 million; 0.71% from \$750 million to \$1 billion; 0.70% from \$1 billion to \$2 billion; 0.66% from \$2 billion to \$3 billion; 0.61% from \$3 billion to \$7 billion; 0.585% from \$7 billion to \$9 billion; and 0.575% on assets over \$9 billion. During the six-month period ended April 30, 2024, the effective management fee rate was 0.61% of the Fund's average daily net assets, exclusive of any applicable waivers/reimbursements.

New York Life Investments has contractually agreed to waive a portion of its management fee so that the management fee does not exceed 0.55% of the Fund's average daily net assets from \$11 billion to \$13 billion; and 0.525% of the Fund's average daily net assets over \$13 billion. This agreement will remain in effect until February 28, 2025, and shall renew automatically for one-year terms unless New York Life Investments

provides written notice of termination prior to the start of the next term or upon approval of the Board.

New York Life Investments has also contractually agreed to waive fees and/or reimburse expenses so that Total Annual Fund Operating Expenses (excluding taxes, interest, litigation, extraordinary expenses, brokerage and other transaction expenses relating to the purchase and sale of portfolio investments, and acquired (underlying) fund fees and expenses) of Class I shares do not exceed 0.88% of the Fund's average daily net assets. New York Life Investments has also contractually agreed to waive fees and/or reimburse expenses so that Total Annual Fund Operating Expenses (excluding taxes, interest, litigation, extraordinary expenses, brokerage and other transaction expenses relating to the purchase or sale of portfolio investments, and acquired (underlying) fund fees and expenses) of Class R6 do not exceed those of Class I. These agreements will remain in effect until February 28, 2025, and shall renew automatically for one-year terms unless New York Life Investments provides written notice of termination prior to the start of the next term or upon approval of the Board.

Additionally, New York Life Investments has agreed to further voluntarily waive fees and/or reimburse expenses of the appropriate class of the Fund so that Total Annual Fund Operating Expenses (excluding taxes, interest, litigation, extraordinary expenses, brokerage and other transaction expenses relating to the purchase and sale of portfolio investments, and acquired (underlying) fund fees and expenses) of Class R1 shares do not exceed 0.95%. These voluntary waivers or reimbursements may be discontinued at any time without notice.

During the six-month period ended April 30, 2024, New York Life Investments earned fees from the Fund in the amount of \$42,940,783 and waived fees and/or reimbursed expenses in the amount of \$526,884 and paid the Subadvisor fees in the amount of \$16,847,575.

JPMorgan provides sub-administration and sub-accounting services to the Fund pursuant to an agreement with New York Life Investments. These services include calculating the daily NAVs of the Fund, maintaining the general ledger and sub-ledger accounts for the calculation of the Fund's NAVs, and assisting New York Life Investments in conducting various aspects of the Fund's administrative operations. For providing these services to the Fund, JPMorgan is compensated by New York Life Investments.

Pursuant to an agreement between the Trust and New York Life Investments, New York Life Investments is responsible for providing or procuring certain regulatory reporting services for the Fund. The Fund will reimburse New York Life Investments for the actual costs incurred by New York Life Investments in connection with providing or procuring these services for the Fund.

(B) Distribution and Service Fees. The Trust, on behalf of the Fund, has entered into a distribution agreement with NYLIFE Distributors LLC (the "Distributor"), an affiliate of New York Life Investments. The Fund has adopted distribution plans (the "Plans") in accordance with the provisions of Rule 12b-1 under the 1940 Act.

Pursuant to the Class A, Investor Class and Class R2 Plans, the Distributor receives a monthly fee from the Class A, Investor Class and Class R2 shares at an annual rate of 0.25% of the average daily net assets of the Class A, Investor Class and Class R2 shares for distribution and/or service activities as designated by the Distributor. Pursuant to the Class B and Class C Plans, Class B and Class C shares pay the Distributor a monthly distribution fee at an annual rate of 0.75% of the average daily net assets of the Class B and Class C shares, along with a service fee at an annual rate of 0.25% of the average daily net assets of the Class B and Class C shares, for a total 12b-1 fee of 1.00%. Pursuant to the Class R3 and SIMPLE Class Plans, Class R3 and SIMPLE Class shares pay the Distributor a monthly distribution fee at an annual rate of 0.25% of the average daily net assets of the Class R3 and SIMPLE Class shares, along with a service fee at an annual rate of 0.25% of the average daily net assets of the Class R3 and SIMPLE Class shares, for a total 12b-1 fee of 0.50%. Class I, Class R1 and Class R6 shares are not subject to a distribution and/or service fee.

The Plans provide that the distribution and service fees are payable to the Distributor regardless of the amounts actually expended by the Distributor for distribution of the Fund's shares and service activities.

In accordance with the Shareholder Services Plans for the Class R1, Class R2 and Class R3 shares, the Manager has agreed to provide, through its affiliates or independent third parties, various shareholder and administrative support services to shareholders of the Class R1, Class R2 and Class R3 shares. For its services, the Manager, its affiliates or independent third-party service providers are entitled to a shareholder service fee accrued daily and paid monthly at an annual rate of 0.10% of the average daily net assets of the Class R1, Class R2 and Class R3 shares. This is in addition to any fees paid under the Class R2 and Class R3 Plans.

During the six-month period ended April 30, 2024, shareholder service fees incurred by the Fund were as follows:

Class R1	\$503,915
Class R2	66,183
Class R3	20,768

(C) Sales Charges. The Fund was advised by the Distributor that the amount of initial sales charges retained on sales of Class A and Investor Class shares during the six-month period ended April 30, 2024, were \$98,289 and \$8,341, respectively.

The Fund was also advised that the Distributor retained CDSCs on redemptions of Class A, Class B and Class C shares during the six-month period ended April 30, 2024, of \$1,667, \$15 and \$2,293, respectively.

(D) Transfer, Dividend Disbursing and Shareholder Servicing Agent. NYLIM Service Company LLC, an affiliate of New York Life Investments, is the Fund's transfer, dividend disbursing and shareholder servicing agent pursuant to an agreement between NYLIM Service Company LLC and the Trust. NYLIM Service Company LLC has entered

Notes to Financial Statements (Unaudited) (continued)

into an agreement with SS&C Global Investor & Distribution Solutions, Inc. ("SS&C"), pursuant to which SS&C performs certain transfer agent services on behalf of NYLIM Service Company LLC. New York Life Investments has contractually agreed to limit the transfer agency expenses charged to the Fund's share classes to a maximum of 0.35% of that share class's average daily net assets on an annual basis after deducting any applicable Fund or class-level expense reimbursement or small account fees. This agreement will remain in effect until February 28, 2025, and shall renew automatically for one-year terms unless New York Life Investments provides written notice of termination prior to the start of the next term or upon approval of the Board. During the six-month period ended April 30, 2024, transfer agent expenses incurred by the Fund and any reimbursements, pursuant to the aforementioned Transfer Agency expense limitation agreement, were as follows:

Class	Expense	Waived
Class A	\$ 541,824	\$—
Investor Class	93,910	—
Class B	7,992	—
Class C	57,685	—
Class I	2,814,706	—
Class R1	387,634	—
Class R2	50,877	—
Class R3	15,961	—
Class R6	79,837	—
SIMPLE Class	143	—

(E) Small Account Fee. Shareholders with small accounts adversely impact the cost of providing transfer agency services. In an effort to reduce total transfer agency expenses, the Fund has implemented a small account fee on certain types of accounts. As described in the Fund's prospectus, certain shareholders with an account balance of less than \$1,000 (\$5,000 for Class A share accounts) are charged an annual per account fee of \$20 (assessed semi-annually), the proceeds from which offset transfer agent fees as reflected in the Statement of Operations. This small account fee will not apply to certain types of accounts as described further in the Fund's prospectus.

(F) Capital. As of April 30, 2024, New York Life and its affiliates beneficially held shares of the Fund with the values and percentages of net assets as follows:

SIMPLE Class	\$33,542	4.9%
--------------	----------	------

Note 4—Federal Income Tax

As of April 30, 2024, the cost and unrealized appreciation (depreciation) of the Fund's investment portfolio, including applicable derivative contracts and other financial instruments, as determined on a federal income tax basis, were as follows:

	Federal Tax Cost	Gross Unrealized Appreciation	Gross Unrealized Depreciation	Net Unrealized Appreciation/Depreciation
Investments in Securities	\$8,939,109,931	\$5,281,923,309	\$(199,153,797)	\$5,082,769,512

During the year ended October 31, 2023, the tax character of distributions paid as reflected in the Statements of Changes in Net Assets was as follows:

	2023
Distributions paid from:	
Ordinary Income	\$ 13,433,752
Long-Term Capital Gains	1,292,659,969
Total	\$1,306,093,721

Note 5—Custodian

JPMorgan is the custodian of cash and securities held by the Fund. Custodial fees are charged to the Fund based on the Fund's net assets and/or the market value of securities held by the Fund and the number of certain transactions incurred by the Fund.

Note 6—Line of Credit

The Fund and certain other funds managed by New York Life Investments maintain a line of credit with a syndicate of banks in order to secure a source of funds for temporary purposes to meet unanticipated or excessive redemption requests.

Effective July 25, 2023, under the credit agreement (the "Credit Agreement"), the aggregate commitment amount is \$600,000,000 with an additional uncommitted amount of \$100,000,000. The commitment fee is an annual rate of 0.15% of the average commitment amount payable quarterly, regardless of usage, to JPMorgan, who serves as the agent to the syndicate. The commitment fee is allocated among the Fund and certain other funds managed by New York Life Investments based upon their respective net assets and other factors. Interest on any revolving credit loan is charged based upon the Federal Funds Rate, Daily Simple Secured Overnight Financing Rate ("SOFR") + 0.10%, or the Overnight Bank Funding Rate, whichever is higher. The Credit Agreement expires on July 23, 2024, although the Fund, certain other funds managed by New York Life Investments and the syndicate of banks may renew the Credit Agreement for an additional year on the same or different terms or enter into a credit agreement with a different syndicate of banks. Prior to July 25, 2023, the aggregate commitment amount and

the commitment fee were the same as those under the current Credit Agreement. During the six-month period ended April 30, 2024, there were no borrowings made or outstanding with respect to the Fund under the Credit Agreement.

Note 7—Interfund Lending Program

Pursuant to an exemptive order issued by the SEC, the Fund, along with certain other funds managed by New York Life Investments, may participate in an interfund lending program. The interfund lending program provides an alternative credit facility that permits the Fund and certain other funds managed by New York Life Investments to lend or borrow money for temporary purposes directly to or from one another, subject to the conditions of the exemptive order. During the six-month period ended April 30, 2024, there were no interfund loans made or outstanding with respect to the Fund.

Note 8—Purchases and Sales of Securities (in 000's)

During the six-month period ended April 30, 2024, purchases and sales of securities, other than short-term securities, were \$5,041,274 and \$6,248,649, respectively.

Note 9—Capital Share Transactions

Transactions in capital shares for the six-month period ended April 30, 2024 and the year ended October 31, 2023, were as follows:

Class A	Shares	Amount
Six-month period ended April 30, 2024:		
Shares sold	14,954,758	\$ 144,785,247
Shares issued to shareholders in reinvestment of distributions	14,162,184	120,236,969
Shares redeemed	(14,113,363)	(133,460,830)
Net increase (decrease) in shares outstanding before conversion	15,003,579	131,561,386
Shares converted into Class A (See Note 1)	1,685,487	16,268,621
Shares converted from Class A (See Note 1)	(212,237)	(2,069,506)
Net increase (decrease)	16,476,829	\$ 145,760,501
Year ended October 31, 2023:		
Shares sold	15,983,106	\$ 129,616,235
Shares issued to shareholders in reinvestment of distributions	17,289,578	125,347,772
Shares redeemed	(29,604,181)	(235,655,363)
Net increase (decrease) in shares outstanding before conversion	3,668,503	19,308,644
Shares converted into Class A (See Note 1)	1,268,493	10,288,730
Shares converted from Class A (See Note 1)	(174,362)	(1,381,429)
Net increase (decrease)	4,762,634	\$ 28,215,945

Investor Class	Shares	Amount
Six-month period ended April 30, 2024:		
Shares sold	300,116	\$ 2,728,910
Shares issued to shareholders in reinvestment of distributions	889,705	7,233,403
Shares redeemed	(358,104)	(3,258,755)
Net increase (decrease) in shares outstanding before conversion	831,717	6,703,558
Shares converted into Investor Class (See Note 1)	81,255	755,914
Shares converted from Investor Class (See Note 1)	(1,343,462)	(12,478,843)
Net increase (decrease)	(430,490)	\$ (5,019,371)
Year ended October 31, 2023:		
Shares sold	594,759	\$ 4,639,901
Shares issued to shareholders in reinvestment of distributions	1,231,575	8,608,707
Shares redeemed	(2,052,819)	(15,881,811)
Net increase (decrease) in shares outstanding before conversion	(226,485)	(2,633,203)
Shares converted into Investor Class (See Note 1)	193,762	1,546,555
Shares converted from Investor Class (See Note 1)	(599,739)	(4,736,436)
Net increase (decrease)	(632,462)	\$ (5,823,084)

Class B	Shares	Amount
Six-month period ended April 30, 2024:		
Shares sold	26,733	\$ 143,465
Shares issued to shareholders in reinvestment of distributions	236,119	1,116,844
Shares redeemed	(256,518)	(1,365,184)
Net increase (decrease) in shares outstanding before conversion	6,334	(104,875)
Shares converted from Class B (See Note 1)	(375,955)	(2,009,936)
Net increase (decrease)	(369,621)	\$ (2,114,811)
Year ended October 31, 2023:		
Shares sold	13,930	\$ 64,994
Shares issued to shareholders in reinvestment of distributions	401,754	1,767,718
Shares redeemed	(298,158)	(1,460,234)
Net increase (decrease) in shares outstanding before conversion	117,526	372,478
Shares converted from Class B (See Note 1)	(665,391)	(3,230,081)
Net increase (decrease)	(547,865)	\$ (2,857,603)

Notes to Financial Statements (Unaudited) (continued)

Class C	Shares	Amount
Six-month period ended April 30, 2024:		
Shares sold	605,839	\$ 3,172,941
Shares issued to shareholders in reinvestment of distributions	1,379,854	6,485,314
Shares redeemed	(1,726,639)	(9,195,497)
Net increase (decrease) in shares outstanding before conversion	259,054	462,758
Shares converted from Class C (See Note 1)	(202,017)	(1,071,425)
Net increase (decrease)	57,037	\$ (608,667)
Year ended October 31, 2023:		
Shares sold	907,854	\$ 4,372,020
Shares issued to shareholders in reinvestment of distributions	1,816,650	7,956,928
Shares redeemed	(3,484,405)	(16,834,402)
Net increase (decrease) in shares outstanding before conversion	(759,900)	(4,505,454)
Shares converted from Class C (See Note 1)	(399,925)	(1,981,428)
Net increase (decrease)	(1,159,826)	\$ (6,486,882)

Class I	Shares	Amount
Six-month period ended April 30, 2024:		
Shares sold	45,270,507	\$ 512,190,156
Shares issued to shareholders in reinvestment of distributions	53,790,718	545,437,883
Shares redeemed	(101,682,013)	(1,158,945,594)
Net increase (decrease) in shares outstanding before conversion	(2,620,788)	(101,317,555)
Shares converted into Class I (See Note 1)	188,233	2,185,038
Shares converted from Class I (See Note 1)	(131,604)	(1,491,139)
Net increase (decrease)	(2,564,159)	\$ (100,623,656)
Year ended October 31, 2023:		
Shares sold	87,063,257	\$ 813,021,273
Shares issued to shareholders in reinvestment of distributions	72,242,661	614,062,619
Shares redeemed	(178,838,638)	(1,685,015,501)
Net increase (decrease) in shares outstanding before conversion	(19,532,720)	(257,931,609)
Shares converted into Class I (See Note 1)	157,330	1,466,305
Shares converted from Class I (See Note 1)	(201,120)	(1,891,775)
Net increase (decrease)	(19,576,510)	\$ (258,357,079)

Class R1	Shares	Amount
Six-month period ended April 30, 2024:		
Shares sold	6,954,886	\$ 74,465,044
Shares issued to shareholders in reinvestment of distributions	9,088,812	86,798,156
Shares redeemed	(13,540,792)	(143,042,205)
Net increase (decrease) in shares outstanding before conversion	2,502,906	18,220,995
Shares converted into Class R1 (See Note 1)	222,041	2,104,945
Net increase (decrease)	2,724,947	\$ 20,325,940
Year ended October 31, 2023:		
Shares sold	18,440,679	\$ 167,960,802
Shares issued to shareholders in reinvestment of distributions	10,722,851	86,318,947
Shares redeemed	(19,868,278)	(178,889,345)
Net increase (decrease) in shares outstanding before conversion	9,295,252	75,390,404
Shares converted into Class R1 (See Note 1)	7,150	60,468
Shares converted from Class R1 (See Note 1)	(23,920)	(240,876)
Net increase (decrease)	9,278,482	\$ 75,209,996

Class R2	Shares	Amount
Six-month period ended April 30, 2024:		
Shares sold	1,592,409	\$ 14,274,780
Shares issued to shareholders in reinvestment of distributions	1,108,636	9,246,020
Shares redeemed	(1,705,636)	(15,967,888)
Net increase (decrease) in shares outstanding before conversion	995,409	7,552,912
Shares converted from Class R2 (See Note 1)	(250,589)	(2,104,945)
Net increase (decrease)	744,820	\$ 5,447,967
Year ended October 31, 2023:		
Shares sold	2,296,843	\$ 17,881,375
Shares issued to shareholders in reinvestment of distributions	1,391,973	9,938,687
Shares redeemed	(3,601,858)	(28,456,267)
Net increase (decrease) in shares outstanding before conversion	86,958	(636,205)
Shares converted from Class R2 (See Note 1)	(2,389)	(17,227)
Net increase (decrease)	84,569	\$ (653,432)

Class R3	Shares	Amount
Six-month period ended April 30, 2024:		
Shares sold	624,458	\$ 5,033,128
Shares issued to shareholders in reinvestment of distributions	618,158	4,456,920
Shares redeemed	(756,474)	(5,999,961)
Net increase (decrease) in shares outstanding before conversion	486,142	3,490,087
Shares converted from Class R3 (See Note 1)	(10,401)	(88,724)
Net increase (decrease)	475,741	\$ 3,401,363
Year ended October 31, 2023:		
Shares sold	922,756	\$ 6,449,354
Shares issued to shareholders in reinvestment of distributions	870,215	5,473,601
Shares redeemed	(2,412,610)	(16,649,602)
Net increase (decrease)	(619,639)	\$ (4,726,647)

Class R6	Shares	Amount
Six-month period ended April 30, 2024:		
Shares sold	27,584,253	\$ 317,042,974
Shares issued to shareholders in reinvestment of distributions	28,521,267	294,054,260
Shares redeemed	(64,144,431)	(734,327,946)
Net increase (decrease)	(8,038,911)	\$ (123,230,712)
Year ended October 31, 2023:		
Shares sold	63,800,380	\$ 606,984,764
Shares issued to shareholders in reinvestment of distributions	40,759,793	351,349,412
Shares redeemed	(109,697,203)	(1,025,523,675)
Net increase (decrease) in shares outstanding before conversion	(5,137,030)	(67,189,499)
Shares converted into Class R6 (See Note 1)	11,946	117,194
Net increase (decrease)	(5,125,084)	\$ (67,072,305)

SIMPLE Class	Shares	Amount
Six-month period ended April 30, 2024:		
Shares sold	27,005	\$ 241,870
Shares issued to shareholders in reinvestment of distributions	5,820	46,846
Shares redeemed	(3,184)	(30,100)
Net increase (decrease)	29,641	\$ 258,616
Year ended October 31, 2023:		
Shares sold	13,600	\$ 102,611
Shares issued to shareholders in reinvestment of distributions	4,458	30,895
Shares redeemed	(1,770)	(12,674)
Net increase (decrease)	16,288	\$ 120,832

Note 10—Other Matters

As of the date of this report, the Fund faces a heightened level of risk associated with current uncertainty, volatility and state of economies, financial markets, a high interest rate environment, and labor and health conditions around the world. Events such as war, acts of terrorism, recessions, rapid inflation, the imposition of economic sanctions, earthquakes, hurricanes, epidemics and pandemics and other unforeseen natural or human disasters may have broad adverse social, political and economic effects on the global economy, which could negatively impact the value of the Fund's investments. Developments that disrupt global economies and financial markets may magnify factors that affect the Fund's performance.

Note 11—Subsequent Events

In connection with the preparation of the financial statements of the Fund as of and for the six-month period ended April 30, 2024, events and transactions subsequent to April 30, 2024, through the date the financial statements were issued, have been evaluated by the Manager for possible adjustment and/or disclosure. No subsequent events requiring financial statement adjustment or disclosure have been identified.

Board Consideration and Approval of Management Agreement and Subadvisory Agreement (Unaudited)

The continuation of the Management Agreement with respect to the MainStay Winslow Large Cap Growth Fund ("Fund") and New York Life Investment Management LLC ("New York Life Investments") and the Subadvisory Agreement between New York Life Investments and Winslow Capital Management, LLC ("Winslow Capital") with respect to the Fund (together, "Advisory Agreements") is subject to annual review and approval by the Board of Trustees of The MainStay Funds ("Board" of the "Trust") in accordance with Section 15 of the Investment Company Act of 1940, as amended ("1940 Act"). At its December 6–7, 2023 meeting, the Board, including the Trustees who are not an "interested person" (as such term is defined in the 1940 Act) of the Trust ("Independent Trustees") voting separately, unanimously approved the continuation of each of the Advisory Agreements for a one-year period.

In reaching the decision to approve the continuation of each of the Advisory Agreements, the Board considered information and materials furnished by New York Life Investments and Winslow Capital in connection with an annual contract review process undertaken by the Board that took place at meetings of the Board and its Contracts Committee from September 2023 through December 2023, including information and materials furnished by New York Life Investments and Winslow Capital in response to requests prepared on behalf of the Board, and in consultation with the Independent Trustees, by independent legal counsel to the Independent Trustees, which encompassed a variety of topics, including those summarized below. Information and materials requested by and furnished to the Board for consideration in connection with the contract review process included, among other items, reports on the Fund and "peer funds" prepared by Institutional Shareholder Services Inc. ("ISS"), an independent third-party service provider engaged by the Board to report objectively on the Fund's investment performance, management fee and total expenses. The Board also considered information on the fees charged to other investment advisory clients of New York Life Investments and/or Winslow Capital that follow investment strategies similar to those of the Fund, if any, and, when applicable, the rationale for differences in the Fund's management and subadvisory fees and the fees charged to those other investment advisory clients. In addition, the Board considered information regarding the legal standards and fiduciary obligations applicable to its consideration of the continuation of each of the Advisory Agreements. The contract review process, including the structure and format for information and materials provided to the Board, has been developed in consultation with the Board. The Independent Trustees also met in executive sessions with their independent legal counsel and, for portions thereof, with senior management of New York Life Investments.

The Board's deliberations with respect to the continuation of each of the Advisory Agreements reflect a year-long process, and the Board also took into account information furnished to the Board and its Committees throughout the year, as deemed relevant and appropriate by the Trustees, including, among other items, reports on investment performance of the Fund and investment-related matters for the Fund as well as presentations from New York Life Investments and, generally annually, Winslow Capital personnel. In addition, the Board took into account other

information provided by New York Life Investments throughout the year, including, among other items, periodic reports on legal and compliance matters, risk management, portfolio turnover, brokerage commissions and non-advisory services provided to the Fund by New York Life Investments, as deemed relevant and appropriate by the Trustees.

In addition to information provided to the Board throughout the year, the Board received information in connection with its June 2023 meeting provided specifically in response to requests prepared on behalf of the Board, and in consultation with the Independent Trustees, by independent legal counsel to the Independent Trustees regarding the Fund's distribution arrangements. In addition, the Board received information regarding the Fund's asset levels, share purchase and redemption activity and the payment of Rule 12b-1 and/or certain other fees by the applicable share classes of the Fund, among other information.

In considering the continuation of each of the Advisory Agreements, the Trustees reviewed and evaluated the information and factors they believed to reasonably be necessary and appropriate in light of legal advice furnished to them by independent legal counsel to the Independent Trustees and through the exercise of their own business judgment. Although individual Trustees may have weighed certain factors or information differently and the Board did not consider any single factor or information controlling in reaching its decision, the factors that figured prominently in the Board's consideration of the continuation of each of the Advisory Agreements are summarized in more detail below and include, among other factors: (i) the nature, extent and quality of the services provided to the Fund by New York Life Investments and Winslow Capital; (ii) the qualifications of the portfolio managers of the Fund and the historical investment performance of the Fund, New York Life Investments and Winslow Capital; (iii) the costs of the services provided, and profits realized, by New York Life Investments and Winslow Capital with respect to their relationships with the Fund; (iv) the extent to which economies of scale have been realized or may be realized if the Fund grows and the extent to which any economies of scale have been shared, have benefited or may benefit the Fund's shareholders; and (v) the reasonableness of the Fund's management and subadvisory fees and total ordinary operating expenses. Although the Board recognized that comparisons between the Fund's fees and expenses and those of other funds are imprecise given different terms of agreements, variations in fund strategies and other factors, the Board considered the reasonableness of the Fund's management fee and total ordinary operating expenses as compared to the peer funds identified by ISS. Throughout their considerations, the Trustees acknowledged the commitment of New York Life Investments and its affiliates to serve the MainStay Group of Funds, as well as their capacity, experience, resources, financial stability and reputations. The Trustees also acknowledged the entrepreneurial and other risks assumed by New York Life Investments in sponsoring and managing the Fund.

With respect to the Subadvisory Agreement, the Board took into account New York Life Investments' recommendation to approve the continuation of the Subadvisory Agreement.

The Trustees noted that, throughout the year, the Trustees are afforded an opportunity to ask questions of, and request additional information or materials from, New York Life Investments and Winslow Capital. The Board's decision with respect to each of the Advisory Agreements may have also been based, in part, on the Board's knowledge of New York Life Investments and Winslow Capital resulting from, among other things, the Board's consideration of each of the Advisory Agreements in prior years, the advisory agreements for other funds in the MainStay Group of Funds, the Board's review throughout the year of the performance and operations of other funds in the MainStay Group of Funds and each Trustee's business judgment and industry experience. In addition to considering the above-referenced factors, the Board observed that in the marketplace there are a range of investment options available to investors and that the Fund's shareholders, having had the opportunity to consider other investment options, have invested in the Fund.

The factors that figured prominently in the Board's decision to approve the continuation of each of the Advisory Agreements during the Board's December 6–7, 2023 meeting are summarized in more detail below.

Nature, Extent and Quality of Services Provided by New York Life Investments and Winslow Capital

The Board examined the nature, extent and quality of the services that New York Life Investments provides to the Fund. The Board evaluated New York Life Investments' experience and capabilities in serving as manager of the Fund and considered that the Fund operates in a "manager-of-managers" structure. The Board also considered New York Life Investments' responsibilities and services provided pursuant to this structure, including overseeing the services provided by Winslow Capital, evaluating the performance of Winslow Capital, making recommendations to the Board as to whether the Subadvisory Agreement should be renewed, modified or terminated and periodically reporting to the Board regarding the results of New York Life Investments' evaluation and monitoring functions. The Board noted that New York Life Investments manages other mutual funds, serves a variety of other investment advisory clients, including other pooled investment vehicles, and has experience overseeing mutual fund service providers, including subadvisors. The Board considered the experience of senior personnel at New York Life Investments providing management and administrative and other non-advisory services to the Fund. The Board observed that New York Life Investments devotes significant resources and time to providing management and administrative and other non-advisory services to the Fund, including New York Life Investments' oversight and due diligence reviews of Winslow Capital and ongoing analysis of, and interactions with, Winslow Capital with respect to, among other things, the Fund's investment performance and risks as well as Winslow Capital's investment capabilities and subadvisory services with respect to the Fund.

The Board also considered the range of services that New York Life Investments provides to the Fund under the terms of the Management Agreement, including: (i) fund accounting and ongoing supervisory services provided by New York Life Investments' Fund Administration and

Accounting Group; (ii) investment supervisory and analytical services provided by New York Life Investments' Investment Consulting Group; (iii) compliance services provided by the Trust's Chief Compliance Officer as well as New York Life Investments' compliance department, including supervision and implementation of the Fund's compliance program; (iv) legal services provided by New York Life Investments' Office of the General Counsel; and (v) risk management monitoring and analysis by compliance and investment personnel. In addition, the Board considered New York Life Investments' willingness to invest in personnel and other resources, such as cyber security, information security and business continuity planning, that may benefit the Fund and noted that New York Life Investments is responsible for compensating the Trust's officers, except for a portion of the salary of the Trust's Chief Compliance Officer. The Board recognized that New York Life Investments provides certain other non-advisory services to the Fund and has over time provided an increasingly broad array of non-advisory services to the MainStay Group of Funds as a result of regulatory and other developments.

The Board also examined the range, and the nature, extent and quality, of the investment advisory services that Winslow Capital provides to the Fund and considered the terms of each of the Advisory Agreements. The Board evaluated Winslow Capital's experience and performance in serving as subadvisor to the Fund and advising other portfolios and Winslow Capital's track record and experience in providing investment advisory services as well as the experience of investment advisory, senior management and/or administrative personnel at Winslow Capital. The Board considered New York Life Investments' and Winslow Capital's overall resources, legal and compliance environment, capabilities, reputation, financial condition and history. In addition to information provided in connection with quarterly meetings with the Trust's Chief Compliance Officer, the Board considered information regarding the compliance policies and procedures of New York Life Investments and Winslow Capital and acknowledged their commitment to further developing and strengthening compliance programs that may relate to the Fund. The Board also considered Winslow Capital's ability to recruit and retain qualified investment professionals and willingness to invest in personnel and other resources that may benefit the Fund. In this regard, the Board considered the qualifications and experience of the Fund's portfolio managers, the number of accounts managed by the portfolio managers and the method for compensating the portfolio managers.

In addition, the Board considered information provided by New York Life Investments and Winslow Capital regarding their respective business continuity and disaster recovery plans.

Based on these considerations, among others, the Board concluded that the Fund would likely continue to benefit from the nature, extent and quality of these services.

Investment Performance

In evaluating the Fund's investment performance, the Board considered investment performance results over various periods in light of the Fund's investment objective, strategies and risks. The Board considered

Board Consideration and Approval of Management Agreement and Subadvisory Agreement (Unaudited) (continued)

investment reports on, and analysis of, the Fund's performance provided to the Board throughout the year. These reports include, among other items, information on the Fund's gross and net returns, the Fund's investment performance compared to a relevant investment category and the Fund's benchmarks, the Fund's risk-adjusted investment performance and the Fund's investment performance as compared to peer funds, as appropriate, as well as portfolio attribution information and commentary on the effect of market conditions. The Board also considered information provided by ISS showing the investment performance of the Fund as compared to peer funds. In addition, the Board reviewed the methodology used by ISS to construct the group of peer funds for comparative purposes.

The Board also took into account its discussions with senior management at New York Life Investments concerning the Fund's investment performance over various periods as well as discussions between representatives of Winslow Capital and the members of the Board's Investment Committee, which generally occur on an annual basis.

Based on these considerations, among others, the Board concluded that its review of the Fund's investment performance and related information supported a determination to approve the continuation of each of the Advisory Agreements.

Costs of the Services Provided, and Profits and Other Benefits Realized, by New York Life Investments and Winslow Capital

The Board considered the costs of the services provided under each of the Advisory Agreements. The Board also considered the profitability of New York Life Investments and its affiliates and Winslow Capital due to their relationships with the Fund as well as of New York Life Investments and its affiliates due to their relationships with the MainStay Group of Funds. With respect to the profitability of Winslow Capital's relationship with the Fund, the Board considered information from New York Life Investments that Winslow Capital's subadvisory fee reflected an arm's-length negotiation and that this fee is paid by New York Life Investments, not the Fund, and the relevance of Winslow Capital's profitability was considered by the Trustees in that context. On this basis, the Board primarily considered the costs and profitability for New York Life Investments and its affiliates with respect to the Fund.

In addition, the Board acknowledged the difficulty in obtaining reliable comparative data about mutual fund managers' profitability because such information generally is not publicly available and may be impacted by numerous factors, including the structure of a fund manager's organization, the types of funds it manages, the methodology used to allocate certain fixed costs to specific funds and the manager's capital structure and costs of capital.

In evaluating the costs of the services provided by New York Life Investments and Winslow Capital, and profitability of New York Life Investments and its affiliates and Winslow Capital due to their relationships with the Fund, the Board considered, among other factors, New York Life Investments' and its affiliates' and Winslow Capital's

continuing investments in, or willingness to invest in, personnel and other resources that may support and further enhance the management of the Fund, and that New York Life Investments is responsible for paying the subadvisory fee for the Fund. The Board also considered the financial resources of New York Life Investments and Winslow Capital and acknowledged that New York Life Investments and Winslow Capital must be in a position to recruit and retain experienced professional personnel and to maintain a strong financial position for New York Life Investments and Winslow Capital to continue to provide high-quality services to the Fund. The Board recognized that the Fund benefits from the allocation of certain fixed costs among the funds in the MainStay Group of Funds, among other expected benefits resulting from its relationship with New York Life Investments.

The Board considered information regarding New York Life Investments' methodology for calculating profitability and allocating costs provided by New York Life Investments in connection with the fund profitability analysis presented to the Board. The Board concluded that New York Life Investments' methods for allocating costs and procedures for estimating overall profitability of the relationship with the funds in the MainStay Group of Funds were reasonable. The Board recognized the difficulty in calculating and evaluating a manager's profitability with respect to the Fund and considered that other profitability methodologies may also be reasonable.

The Board also considered certain fall-out benefits that may be realized by New York Life Investments and its affiliates and Winslow Capital and its affiliates due to their relationships with the Fund, including reputational and other indirect benefits. The Board recognized, for example, the benefits to Winslow Capital from legally permitted "soft-dollar" arrangements by which brokers provide research and other services to Winslow Capital in exchange for commissions paid by the Fund with respect to trades in the Fund's portfolio securities. In this regard, the Board also requested and considered information from New York Life Investments concerning other material business relationships between Winslow Capital and its affiliates and New York Life Investments and its affiliates. In addition, the Board considered its review of the management agreement for a money market fund advised by New York Life Investments and an affiliated subadvisor that serves as an investment option for the Fund, including the potential rationale for and costs associated with investments in this money market fund by the Fund, if any, and considered information from New York Life Investments that the nature and type of specific investment advisory services provided to this money market fund are distinct from, or in addition to, the investment advisory services provided to the Fund.

The Board observed that, in addition to fees earned by New York Life Investments under the Management Agreement for managing the Fund, New York Life Investments' affiliates also earn revenues from serving the Fund in various other capacities, including as the Fund's transfer agent and distributor. The Board considered information about these other revenues and their impact on the profitability of the relationship with the Fund to New York Life Investments and its affiliates. The Board noted that, although it assessed the overall profitability of the relationship with

the Fund to New York Life Investments and its affiliates as part of the contract review process, when considering the reasonableness of the fee paid to New York Life Investments under the Management Agreement, the Board considered the profitability of New York Life Investments' relationship with the Fund on a pre-tax basis and without regard to distribution expenses incurred by New York Life Investments from its own resources.

After evaluating the information deemed relevant by the Trustees, the Board concluded that any profits realized by New York Life Investments and its affiliates due to their relationships with the Fund were not excessive, other expected benefits that may accrue to New York Life Investments and its affiliates are reasonable and other expected benefits that may accrue to Winslow Capital and its affiliates are consistent with those expected for a subadvisor to a mutual fund. With respect to Winslow Capital, the Board considered that any profits realized by Winslow Capital due to its relationship with the Fund are the result of arm's-length negotiations between New York Life Investments and Winslow Capital acknowledging that any such profits are based on the subadvisory fee paid to Winslow Capital by New York Life Investments, not the Fund.

Management and Subadvisory Fees and Total Ordinary Operating Expenses

The Board evaluated the reasonableness of the fee paid under each of the Advisory Agreements and the Fund's total ordinary operating expenses. With respect to the management fee and subadvisory fee, the Board primarily considered the reasonableness of the management fee paid by the Fund to New York Life Investments because the subadvisory fee paid to Winslow Capital is paid by New York Life Investments, not the Fund. The Board also considered the reasonableness of the subadvisory fee paid by New York Life Investments and the amount of the management fee retained by New York Life Investments.

In assessing the reasonableness of the Fund's fees and expenses, the Board primarily considered comparative data provided by ISS on the fees and expenses of similar mutual funds managed by other investment advisers. The Board reviewed the methodology used by ISS to construct the group of peer funds for comparative purposes. In addition, the Board considered information provided by New York Life Investments and Winslow Capital on fees charged to other investment advisory clients, including institutional separate accounts and/or other funds, that follow investment strategies similar to those of the Fund, if any. The Board considered the contractual management fee schedule for the Fund as compared to those for such other investment advisory clients, taking into account the rationale for differences in fee schedules. The Board also took into account information provided by New York Life Investments about the more extensive scope of services provided to registered investment companies, such as the Fund, as compared with other investment advisory clients. Additionally, the Board considered the impact of contractual breakpoints, voluntary waivers and expense limitation arrangements on the Fund's net management fee and

expenses. The Board also considered that in proposing fees for the Fund, New York Life Investments considers the competitive marketplace for mutual funds.

The Board took into account information from New York Life Investments, as provided in connection with the Board's June 2023 meeting, regarding the reasonableness of the Fund's transfer agent fee schedule, including industry data demonstrating that the fees that NYLIM Service Company LLC, an affiliate of New York Life Investments and the Fund's transfer agent, charges the Fund are within the range of fees charged by transfer agents to other mutual funds. In addition, the Board considered NYLIM Service Company LLC's profitability in connection with the transfer agent services it provides to the Fund. The Board also took into account information provided by NYLIM Service Company LLC regarding the sub-transfer agency payments it made to intermediaries in connection with the provision of sub-transfer agency services to the Fund.

The Board considered the extent to which transfer agent fees contributed to the total expenses of the Fund. The Board acknowledged the role that the MainStay Group of Funds historically has played in serving the investment needs of New York Life Insurance Company customers, who often maintain smaller account balances than other shareholders of funds, and the impact of small accounts on the expense ratios of Fund share classes. The Board also recognized measures that it and New York Life Investments have taken that are intended to mitigate the effect of small accounts on the expense ratios of Fund share classes, including through the imposition of an expense limitation on net transfer agency expenses. The Board also considered that NYLIM Service Company LLC had waived its contractual cost of living adjustments during certain years.

Based on the factors outlined above, among other considerations, the Board concluded that the Fund's management fee and total ordinary operating expenses are within a range that is competitive and support a conclusion that these fees and expenses are reasonable.

Economies of Scale

The Board considered information regarding economies of scale, including whether economies of scale may exist with respect to the Fund and whether the Fund's management fee and expense structure permits any economies of scale to be appropriately shared with the Fund's shareholders. The Board also considered a report from New York Life Investments, previously prepared at the request of the Board, that addressed economies of scale, including with respect to the mutual fund business generally, and the various ways in which the benefits of economies of scale may be shared with the funds in the MainStay Group of Funds. Although the Board recognized the difficulty of determining economies of scale with precision, the Board acknowledged that economies of scale may be shared with the Fund in a number of ways, including, for example, through the imposition of fee breakpoints, initially setting management fee rates at scale or making additional investments to enhance the services provided to the Fund. The Board reviewed information from New York Life Investments showing how the Fund's management fee schedule compared to fee schedules of other funds and

Board Consideration and Approval of Management Agreement and Subadvisory Agreement (Unaudited) (continued)

accounts managed by New York Life Investments. The Board also reviewed information from ISS showing how the Fund's management fee schedule compared with fees paid for similar services by peer funds at varying asset levels.

Based on this information, the Board concluded that economies of scale are appropriately shared for the benefit of the Fund's shareholders through the Fund's management fee and expense structure and other methods to share benefits from economies of scale.

Conclusion

On the basis of the information and factors summarized above, among other information and factors deemed relevant by the Trustees, and the evaluation thereof, the Board, including the Independent Trustees voting separately, unanimously voted to approve the continuation of each of the Advisory Agreements.

Discussion of the Operation and Effectiveness of the Fund's Liquidity Risk Management Program (Unaudited)

In compliance with Rule 22e-4 under the Investment Company Act of 1940, as amended (the "Liquidity Rule"), the Fund has adopted and implemented a liquidity risk management program (the "Program"), which New York Life Investment Management LLC believes is reasonably designed to assess and manage the Fund's liquidity risk. A Fund's liquidity risk is the risk that the Fund could not meet requests to redeem shares issued by the Fund without significant dilution of the remaining investors' interests in the Fund. The Board of Trustees of The MainStay Funds (the "Board") previously approved the designation of New York Life Investment Management LLC as administrator of the Program (the "Administrator"). The Administrator has established a Liquidity Risk Management Committee to assist the Administrator in the implementation and day-to-day administration of the Program and to otherwise support the Administrator in fulfilling its responsibilities under the Program.

At a meeting of the Board held on February 27, 2024, the Administrator provided the Board with a written report addressing the Program's operation and assessing the adequacy and effectiveness of its implementation for the period from January 1, 2023, through December 31, 2023 (the "Review Period"), as required under the Liquidity Rule. The report noted that the Administrator concluded that (i) the Program operated effectively to assess and manage the Fund's liquidity risk, (ii) the Program has been and continues to be adequately and effectively implemented to monitor and, as applicable, respond to the Fund's liquidity developments and (iii) the Fund's investment strategy continues to be appropriate for an open-end fund. In addition, the report summarized the operation of the Program and the information and factors considered by the Administrator in its assessment of the Program's implementation, such as the liquidity risk assessment framework and the liquidity classification methodologies, and discussed notable geopolitical, market and other economic events that impacted liquidity risk during the Review Period.

In accordance with the Program, the Fund's liquidity risk is assessed no less frequently than annually taking into consideration certain factors, as applicable, such as (i) investment strategy and liquidity of portfolio investments, (ii) short-term and long-term cash flow projections, and (iii) holdings of cash and cash equivalents, as well as borrowing arrangements and other funding sources. Certain factors are considered under both normal and reasonably foreseeable stressed conditions.

Each Fund portfolio investment is classified into one of four liquidity categories. The classification is based on a determination of the number of days it is reasonably expected to take to convert the investment into cash, or sell or dispose of the investment, in current market conditions without significantly changing the market value of the investment. The Administrator has delegated liquidity classification determinations to the Fund's subadvisor, subject to appropriate oversight by the Administrator, and liquidity classification determinations are made by taking into account the Fund's reasonably anticipated trade size, various market, trading and investment-specific considerations, as well as market depth, and, in certain cases, third-party vendor data.

The Liquidity Rule requires funds that do not primarily hold assets that are highly liquid investments to adopt a minimum amount of net assets that must be invested in highly liquid investments that are assets (an "HLIM"). In addition, the Liquidity Rule limits a fund's investments in illiquid investments. Specifically, the Liquidity Rule prohibits acquisition of illiquid investments if, immediately after acquisition, doing so would result in a fund holding more than 15% of its net assets in illiquid investments that are assets. The Program includes provisions reasonably designed to determine, periodically review and comply with the HLIM requirement, as applicable, and to comply with the 15% limit on illiquid investments.

There can be no assurance that the Program will achieve its objectives under all circumstances in the future. Please refer to the Fund's prospectus for more information regarding the Fund's exposure to liquidity risk and other risks to which it may be subject.

Proxy Voting Policies and Procedures and Proxy Voting Record

The Fund is required to file with the SEC its proxy voting record for the 12-month period ending June 30 on Form N-PX. A description of the policies and procedures that are used to vote proxies relating to portfolio securities of the Fund is available free of charge upon request by calling 800-624-6782 or visiting the SEC's website at www.sec.gov. The most recent Form N-PX or proxy voting record is available free of charge upon request by calling 800-624-6782; visiting newyorklifeinvestments.com; or visiting the SEC's website at www.sec.gov.

Shareholder Reports and Quarterly Portfolio Disclosure

The Fund is required to file its complete schedule of portfolio holdings with the SEC 60 days after its first and third fiscal quarter on Form N-PORT. The Fund's holdings report is available free of charge upon request by calling New York Life Investments at 800-624-6782.

MainStay Funds

Equity

U.S. Equity

MainStay Epoch U.S. Equity Yield Fund
MainStay Fiera SMID Growth Fund
MainStay PineStone U.S. Equity Fund
MainStay S&P 500 Index Fund
MainStay Winslow Large Cap Growth Fund
MainStay WMC Enduring Capital Fund
MainStay WMC Growth Fund
MainStay WMC Small Companies Fund
MainStay WMC Value Fund

International Equity

MainStay Epoch International Choice Fund
MainStay PineStone International Equity Fund
MainStay WMC International Research Equity Fund

Emerging Markets Equity

MainStay Candriam Emerging Markets Equity Fund

Global Equity

MainStay Epoch Capital Growth Fund
MainStay Epoch Global Equity Yield Fund
MainStay PineStone Global Equity Fund

Fixed Income

Taxable Income

MainStay Candriam Emerging Markets Debt Fund
MainStay Floating Rate Fund
MainStay MacKay High Yield Corporate Bond Fund
MainStay MacKay Short Duration High Income Fund
MainStay MacKay Strategic Bond Fund
MainStay MacKay Total Return Bond Fund
MainStay MacKay U.S. Infrastructure Bond Fund
MainStay Short Term Bond Fund

Tax-Exempt Income

MainStay MacKay Arizona Muni Fund
MainStay MacKay California Tax Free Opportunities Fund¹
MainStay MacKay Colorado Muni Fund
MainStay MacKay High Yield Municipal Bond Fund
MainStay MacKay New York Tax Free Opportunities Fund²
MainStay MacKay Oregon Muni Fund
MainStay MacKay Short Term Municipal Fund
MainStay MacKay Strategic Municipal Allocation Fund
MainStay MacKay Tax Free Bond Fund
MainStay MacKay Utah Muni Fund

Money Market

MainStay Money Market Fund

Mixed Asset

MainStay Balanced Fund
MainStay Income Builder Fund
MainStay MacKay Convertible Fund

Speciality

MainStay CBRE Global Infrastructure Fund
MainStay CBRE Real Estate Fund
MainStay Cushing MLP Premier Fund

Asset Allocation

MainStay Conservative Allocation Fund
MainStay Conservative ETF Allocation Fund
MainStay Equity Allocation Fund
MainStay Equity ETF Allocation Fund
MainStay Growth Allocation Fund
MainStay Growth ETF Allocation Fund
MainStay Moderate Allocation Fund
MainStay Moderate ETF Allocation Fund

Manager

New York Life Investment Management LLC
New York, New York

Subadvisors

Candriam³

Strassen, Luxembourg

CBRE Investment Management Listed Real Assets LLC

Radnor, Pennsylvania

Cushing Asset Management, LP

Dallas, Texas

Epoch Investment Partners, Inc.

New York, New York

Fiera Capital Inc.

New York, New York

IndexIQ Advisors LLC³

New York, New York

MacKay Shields LLC³

New York, New York

NYL Investors LLC³

New York, New York

PineStone Asset Management Inc.

Montreal, Québec

Wellington Management Company LLP

Boston, Massachusetts

Winslow Capital Management, LLC

Minneapolis, Minnesota

Legal Counsel

Dechert LLP

Washington, District of Columbia

Independent Registered Public Accounting Firm

KPMG LLP

Philadelphia, Pennsylvania

Distributor

NYLIFE Distributors LLC³

Jersey City, New Jersey

Custodian

JPMorgan Chase Bank, N.A.

New York, New York

1. This Fund is registered for sale in AZ, CA, NV, OR, TX, UT, WA (all share classes); and MI (Class A and Class I shares only); and CO, FL, GA, HI, ID, MA, MD, NH, NJ and NY (Class I and Class C2 shares only).
2. This Fund is registered for sale in CA, CT, DE, FL, MA, NJ, NY, VT (all share classes) and SD (Class R6 shares only).
3. An affiliate of New York Life Investment Management LLC.

For more information

800-624-6782

newyorklifeinvestments.com

“New York Life Investments” is both a service mark, and the common trade name, of certain investment advisors affiliated with New York Life Insurance Company. The MainStay Funds[®] are managed by New York Life Investment Management LLC and distributed by NYLIFE Distributors LLC, 30 Hudson Street, Jersey City, NJ 07302, a wholly owned subsidiary of New York Life Insurance Company. NYLIFE Distributors LLC is a Member FINRA/SIPC.

©2024 NYLIFE Distributors LLC. All rights reserved.

5022118 MS081-24

MSLG10-06/24
(NYLIM) NL221