

MainStay VP MacKay Convertible Portfolio

Message from the President and Semiannual Report

Unaudited | June 30, 2023

Sign up for e-delivery of your shareholder reports. For full details on e-delivery, including who can participate and what you can receive via e-delivery, please log in to newyorklifeinvestments.com/accounts.

Not FDIC/NCUA Insured

Not a Deposit

May Lose Value

No Bank Guarantee

Not Insured by Any Government Agency



INVESTMENTS

This page intentionally left blank

Message from the President

Despite high levels of volatility and sharp, short-term shifts in value, broadly based stock and bond indices generally gained ground during the six-month reporting period ended June 30, 2023. Markets reacted positively to several developments – easing inflationary pressures and softening monetary policy – the most prominent among them.

At the start of the reporting period, high levels of inflation had already begun to show signs of easing in the face of aggressive rate hikes by the U.S. Federal Reserve (the “Fed”). From a peak of 9.06% in June 2022, the annualized U.S. inflation rate as measured by the Consumer Price Index fell to 6.41% in January 2023, and to 2.97% in June 2023, according to the most recent figures. At the same time, the Fed increased the benchmark federal funds rate, from 4.25%–4.50% at the beginning of the reporting period, to 5.00%–5.25% as of June 30, 2023. While the Fed signaled that further rate increases were likely in 2023, the Fed also appeared to be approaching the end of its current rate-hike cycle. Economic growth, although slower, remained positive, supported by historically high levels of employment and robust consumer spending. On a negative note, rising interest rates contributed to the failures of a number of high-profile regional banks in March and April 2023, leading to a wider loss of confidence in the banking industry, and increasing the prospect of a tighter credit environment, although swift federal action to guarantee deposits appeared to limit the damage.

Equity market behavior during the reporting period generally reflected investors’ optimism regarding the prospects for a so-called “soft landing,” in which inflation comes under control and the Fed holds rates steady—or begins to lower them—while the economy avoids a severe recession. The S&P 500[®] Index, a widely regarded benchmark of U.S. market performance, posted its first extended gains since November 2021. Previously beaten down growth-oriented shares led the market’s rebound, with information technology the S&P 500[®] Index’s strongest sector, followed by consumer discretionary. However, the communications

services, utilities and energy sectors lost substantial ground as value-oriented stocks fell out of favor and oil prices declined, with financials and health care shares dipping more mildly. While international markets rose, they generally trailed the U.S. market, with developed international markets outperforming their emerging markets counterparts.

Corporate bond prices trended moderately higher amid high volatility, bolstered by positive inflationary and interest rate trends in the United States while constrained by banking industry turmoil. After years of low yields and tight credit spreads, the sector benefited from more attractive valuations and income opportunities. Markets generally rewarded longer duration and lower credit quality, although an uptick in default rates posed added risks for high-yield corporate bonds. Long-term rates remained lower than short-term rates throughout the reporting period, a yield curve inversion that reminded investors of the uncertainties implicit in the current economic environment. U.S. Treasury bonds provided more modest gains, with the positive impact of declining inflation largely balanced by the negative impact of high consumer prices.

However the economic story unfolds in the months and years to come, we remain dedicated to providing you with the long-term focus, unique perspectives and commitment to client service you expect.

Thank you for trusting us to help meet your investment needs.

Sincerely,



Kirk C. Lehneis
President

The opinions expressed are as of the date of this report and are subject to change. There is no guarantee that any forecast made will come to pass. This material does not constitute investment advice and is not intended as an endorsement of any specific investment. Past performance is no guarantee of future results.

Table of Contents

Semiannual Report

Investment and Performance Comparison	5
Portfolio Management Discussion and Analysis	9
Portfolio of Investments	11
Financial Statements	16
Notes to Financial Statements	21
Discussion of the Operation and Effectiveness of the Portfolio's Liquidity Risk Management Program	28
Proxy Voting Policies and Procedures and Proxy Voting Record	29
Shareholder Reports and Quarterly Portfolio Disclosure	29

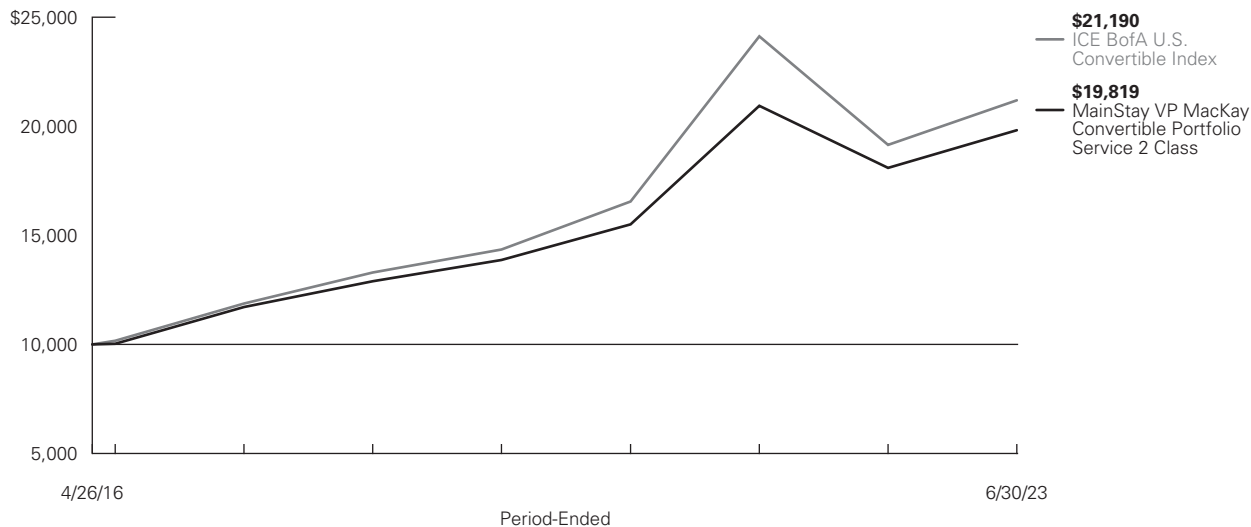
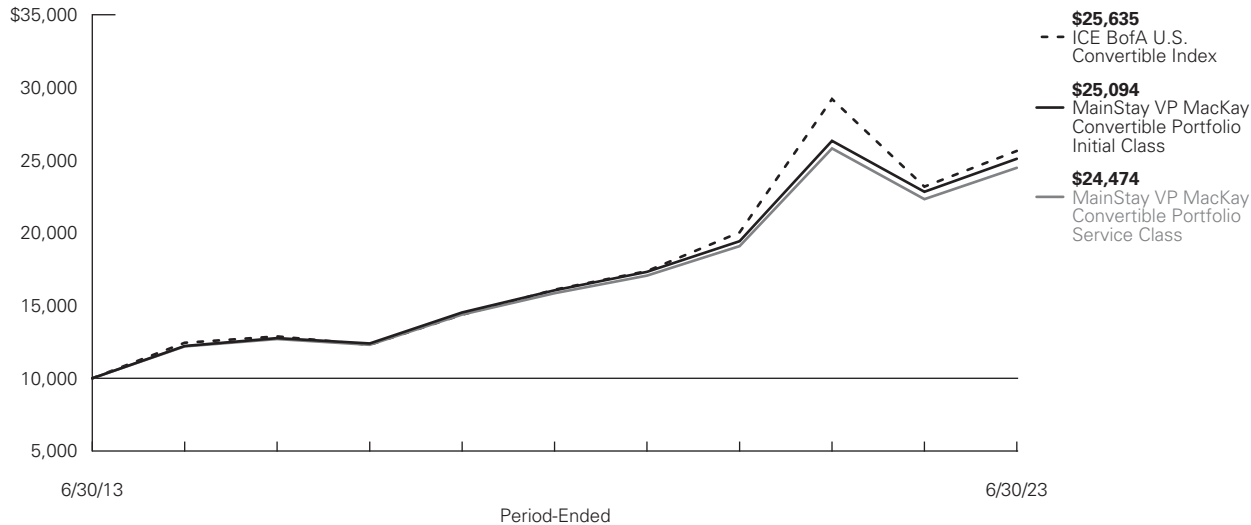
Investors should refer to the Portfolio's Summary Prospectus and/or Prospectus and consider the Portfolio's investment objectives, strategies, risks, charges and expenses carefully before investing. The Summary Prospectus and/or Prospectus contain this and other information about the Portfolio. You may obtain copies of the Portfolio's Summary Prospectus, Prospectus and Statement of Additional Information, which includes information about the MainStay VP Funds Trust's Trustees, free of charge, upon request, by calling toll-free 800-598-2019, by writing to New York Life Insurance and Annuity Corporation, 51 Madison Avenue, Room 251, New York, New York 10010 or by sending an email to MainStayShareholdersServices@nylim.com. These documents are also available at newyorklifeinvestments.com/investment-products/vp. Please read the Portfolio's Summary Prospectus and/or Prospectus carefully before investing. MainStay VP Funds Trust portfolios are separate account options which are purchased through a variable insurance or variable annuity contract.

MainStay VP MacKay Convertible Portfolio

Investment and Performance Comparison (Unaudited)

Performance data quoted represents past performance. Past performance is no guarantee of future results. Because of market volatility and other factors, current performance may be lower or higher than the figures shown. Investment return and principal value will fluctuate, and as a result, when shares are redeemed, they may be worth more or less than their original cost. The performance table and graph do not reflect any deduction of sales charges, mortality and expense charges, contract charges or administrative charges. Please refer to the Performance Summary appropriate for your policy. For performance information current to the most recent month-end, please call 800-598-2019 or visit www.newyorklife.com.

Performance figures may reflect certain fee waivers and/or expense limitations, without which total returns may have been different. For information on current fee waivers and/or expense limitations (if any), please refer to the Notes to Financial Statements.



Average Annual Total Returns for the Period-Ended June 30, 2023

Class	Inception Date	Six Months ¹	One Year	Five Years	Ten Years or Since Inception	Gross Expense Ratio ²
Initial Class Shares	10/1/1996	5.90%	9.93%	9.35%	9.64%	0.57%
Service Class Shares	6/5/2003	5.77	9.66	9.08	9.36	0.82
Service 2 Class Shares	4/26/2016	5.72	9.55	8.98	9.99	0.92

1. Not annualized.

2. The gross expense ratios presented reflect the Portfolio's "Total Annual Portfolio Operating Expenses" from the most recent Prospectus and may differ from other expense ratios disclosed in this report.

Benchmark Performance*	Six Months¹	One Year	Five Years	Ten Years
ICE BofA U.S. Convertible Index ²	8.55%	10.60%	9.76%	9.87%
Morningstar Convertibles Category Average ³	5.66	7.26	7.79	8.10

* Returns for indices reflect no deductions for fees, expenses or taxes, except for foreign withholding taxes where applicable. Results assume reinvestment of all dividends and capital gains. An investment cannot be made directly in an index.

1. Not annualized.
2. The ICE BofA U.S. Convertible Index is the Portfolio's primary broad-based securities market index for comparison purposes. The ICE BofA U.S. Convertible Index is a market-capitalization weighted index of domestic corporate convertible securities. In order to be included in this Index, bonds and preferred stocks must be convertible only to common stock.
3. The Morningstar Convertibles Category Average is representative of funds that are designed to offer some of the capital-appreciation potential of stock portfolios while also supplying some of the safety and yield of bond portfolios. Results are based on average total returns of similar funds with all dividends and capital gain distributions reinvested.

Cost in Dollars of a \$1,000 Investment in MainStay VP MacKay Convertible Portfolio (Unaudited)

The example below is intended to describe the fees and expenses borne by shareholders during the six-month period from January 1, 2023 to June 30, 2023, and the impact of those costs on your investment.

Example

As a shareholder of the Portfolio you incur two types of costs: (1) transaction costs, including exchange fees and sales charges (loads) on purchases (as applicable), and (2) ongoing costs, including management fees, distribution and/or service (12b-1) fees and other Portfolio expenses (as applicable). This example is intended to help you understand your ongoing costs (in dollars) of investing in the Portfolio and to compare these costs with the ongoing costs of investing in other mutual funds. The example is based on an investment of \$1,000 made at the beginning of the six-month period and held for the entire period from January 1, 2023 to June 30, 2023. Shares are only sold in connection with variable life and annuity contracts and the example does not reflect any contract level or transactional fees or expenses. If these costs had been included, your costs would have been higher.

This example illustrates your Portfolio's ongoing costs in two ways:

Actual Expenses

The second and third data columns in the table below provide information about actual account values and actual expenses. You may use the information in these columns, together with the amount you invested, to estimate the expenses that you paid during the six months ended June

30, 2023. Simply divide your account value by \$1,000 (for example, an \$8,600 account value divided by \$1,000 = 8.6), then multiply the result by the number under the heading entitled "Expenses Paid During Period" to estimate the expenses you paid on your account during this period.

Hypothetical Example for Comparison Purposes

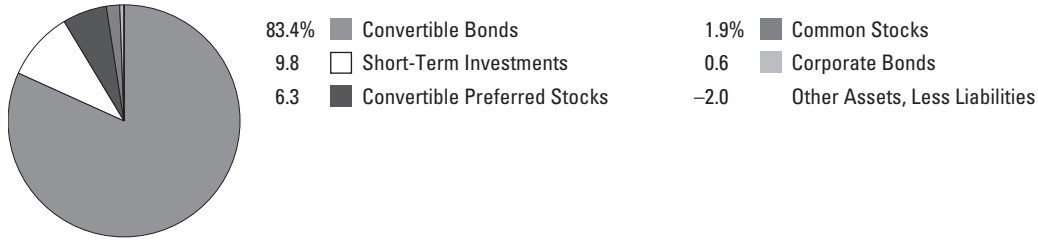
The fourth and fifth data columns in the table below provide information about hypothetical account values and hypothetical expenses based on the Portfolio's actual expense ratio and an assumed rate of return of 5% per year before expenses, which is not the Portfolio's actual return. The hypothetical account values and expenses may not be used to estimate the actual ending account balances or expenses you paid for the six-month period shown. You may use this information to compare the ongoing costs of investing in the Portfolio with the ongoing costs of investing in other mutual funds. To do so, compare this 5% hypothetical example with the 5% hypothetical examples that appear in the shareholder reports of the other mutual funds.

Please note that the expenses shown in the table are meant to highlight your ongoing costs only and do not reflect any transactional costs, such as exchange fees or sales charges (loads). Therefore, the fourth and fifth data columns of the table are useful in comparing ongoing costs only and will not help you determine the relative total costs of owning different funds. In addition, if these transactional costs were included, your costs would have been higher.

Share Class	Beginning Account Value 1/1/23	Ending Account Value (Based on Actual Returns and Expenses) 6/30/23	Expenses Paid During Period ¹	Ending Account Value (Based on Hypothetical 5% Annualized Return and Actual Expenses) 6/30/23	Expenses Paid During Period ¹	Net Expense Ratio During Period ²
Initial Class Shares	\$1,000.00	\$1,059.00	\$2.91	\$1,021.97	\$2.86	0.57%
Service Class Shares	\$1,000.00	\$1,057.70	\$4.18	\$1,020.73	\$4.11	0.82%
Service 2 Class Shares	\$1,000.00	\$1,057.20	\$4.69	\$1,020.23	\$4.61	0.92%

- Expenses are equal to the Portfolio's annualized expense ratio of each class multiplied by the average account value over the period, divided by 365 and multiplied by 181 (to reflect the six-month period). The table above represents the actual expenses incurred during the six-month period. In addition to the fees and expenses which the Portfolio bears directly, it also indirectly bears a pro rata share of the fees and expenses of the underlying funds in which it invests. Such indirect expenses are not included in the above-reported expense figures.
- Expenses are equal to the Portfolio's annualized expense ratio to reflect the six-month period.

Portfolio Composition as of June 30, 2023 (Unaudited)



See Portfolio of Investments beginning on page 11 for specific holdings within these categories. The Portfolio's holdings are subject to change.

Top Ten Holdings and/or Issuers Held as of June 30, 2023 (excluding short-term investments) (Unaudited)

- | | |
|--|---|
| 1. Palo Alto Networks, Inc., 0.375%-0.75%, due 7/1/23–6/1/25 | 6. Ford Motor Co., (zero coupon), due 3/15/26 |
| 2. Nice Ltd., (zero coupon), due 9/15/25 | 7. Pioneer Natural Resources Co., 0.25%, due 5/15/25 |
| 3. EQT Corp., 1.75%, due 5/1/26 | 8. Southwest Airlines Co., 1.25%, due 5/1/25 |
| 4. Microchip Technology, Inc., 0.125%, due 11/15/24 | 9. Lantheus Holdings, Inc., 2.625%, due 12/15/27 |
| 5. BioMarin Pharmaceutical, Inc., 1.25%, due 5/15/27 | 10. Liberty Media Corp., 2.25%-3.75%, due 8/15/27–3/15/28 |
-

Portfolio Management Discussion and Analysis (Unaudited)

Answers to the questions reflect the views of portfolio manager Edward Silverstein, CFA, of MacKay Shields LLC, the Portfolio's Subadvisor.

How did MainStay VP MacKay Convertible Portfolio perform relative to its benchmark and peers during the six months ended June 30, 2023?

For the six months ended June 30, 2023, MainStay VP MacKay Convertible Portfolio returned 5.90% for Initial Class shares, 5.77% for Service Class shares and 5.72% for Service 2 Class shares. Over the same period, all share classes underperformed the 8.55% return of the ICE BofA U.S. Convertible Index (the "Index"), which is the Portfolio's benchmark, and outperformed the 5.66% return of the Morningstar Convertibles Category Average.¹

During the reporting period, were there any market events that materially impacted the Portfolio's performance or liquidity?

The reporting period was characterized by consistent gains in the U.S. convertible market. Convertible performance is highly correlated to the performance of the equities of the issuers of convertible securities. Equity performance was sharply higher during the reporting period, with the S&P 500[®] Index, a widely regarded benchmark of large-cap equity performance, up over 16.8%. However, the more broadly based Russell 2000 Index was up just over 8%, as the performance of the S&P 500[®] Index was heavily influenced by outsized returns produced by seven of its largest constituents: Apple, Amazon.com, Alphabet, Microsoft, Meta Platforms, NVIDIA and Tesla. None of those securities are represented in the Russell Index or the ICE BofA U.S. Convertible Index, which is why convertible performance, while positive, proved disappointing relative to the S&P 500[®] Index. There were no market events that materially impacted the Portfolio during the reporting period.

What factors affected the Portfolio's relative performance during the reporting period?

The Portfolio underperformed the Index during the reporting period due to the Portfolio's relatively underweight exposure to the consumer discretionary sector, and particularly to several issuers within the sector that substantially enhanced Index performance. In addition, the Portfolio's cash holdings were a drag on performance, given the positive Index performance.

During the reporting period, which sectors were the strongest positive contributors to the Portfolio's relative performance, and which sectors were particularly weak?

During the reporting period, the energy sector made the strongest positive contribution to the Portfolio's performance relative to the Index as a result of overweight exposure to several oil & gas exploration & production companies that were particularly strong performers. (Contributions take weightings and total returns into account.) In addition, an underweight allocation to the utilities

sector and an overweight allocation to the consumer staples sector had small positive impacts on relative performance.

The Portfolio's underweight exposure to the consumer discretionary sector had the largest negative impact on the Portfolio's relative performance. Underweight exposure to the financial sector also hurt relative performance, as did security selection within the information technology sector.

During the reporting period, which individual securities made the strongest positive contributions to the Portfolio's absolute performance, and which stocks detracted the most?

The three strongest contributors to the Portfolio's absolute performance were the convertible bonds of network security firm Palo Alto Networks, the convertible bonds of ON Semiconductor, and the convertible bonds and convertible preferred shares of industrial manufacturer Chart Industries. The convertible bonds of Palo Alto Networks performed well after the company reported better-than-expected quarterly earnings and also provided positive guidance for next quarter. Many investors expected Palo Alto to miss earnings expectations following cautious comments from competitors on their respective earnings calls. Not only did Palo Alto not miss expectations, but the solid outlook served as a catalyst to lift the company's common shares and convertible bonds to record highs. As of June 30, 2023, Palo Alto Networks was the Portfolio's largest holding. With one of the Portfolio's two positions in Palo Alto Networks convertible bonds set to mature as of June 30, 2023, exposure was about to decrease by approximately half, leaving the Portfolio with smaller, but still meaningful, exposure to the company. The convertible bonds of ON Semiconductor performed well following the company's analyst day, during which management highlighted the company's long-term business targets with Wall Street analysts. ON's outlook was generally more positive than expected. Additionally, some investors may have bid up semiconductor shares during the reporting period following the strong earnings release from semiconductor maker NVIDIA, and the general belief that semiconductor manufacturers will benefit from spending related to the development of artificial intelligence programs. The convertible bonds and convertible preferred shares of industrial manufacturer Chart Industries performed well during the reporting period when the company announced the sale of a unit for \$300 million; the proceeds will be used to pay down debt. The \$300 million sale is part of a \$500 million asset divestiture plan. Investors were relieved that the company was able to fulfill most of management's plan with one sale, and that this sale will reduce balance sheet leverage. In addition, the company recently announced that it received a large order for liquid natural gas equipment.

1. See page 5 for more information on benchmark and peer group returns.

The Portfolio's three worst performers during the reporting period were the convertible preferred shares of testing and diagnostics company Danaher, the convertible bonds of health insurer, Elevance Health and the convertible bonds of discount retailer Burlington Stores. All three holdings declined in value during the reporting period. The convertible preferred shares of Danaher fell despite the company reporting better-than-expected sales and earnings. The decline in Danaher was likely due to the fact that similarly situated companies reported a slowdown in sales and earnings in response to weaker demand for testing and diagnostics equipment in the wake of the COVID-19 pandemic. The convertible bonds of Elevance also fell despite the company reporting earnings in line with or slightly better-than-expected targets. The decline in Elevance may have been due to investor fear that medical usage during the pandemic, particularly for elective procedures, was unsustainably low, potentially creating headwinds for the profitability of medical insurers, including Elevance, as patients seek deferred, post-pandemic medical care. The convertible bonds of Elevance were called by the issuer earlier in 2023 and were no longer in the Portfolio as of the end of the reporting period. The convertible bonds of discount retailer Burlington Stores declined during the reporting period, in part due to lackluster earnings and sales results, and also in sympathy with the larger discount retail group, which saw many off-price merchants report disappointing sales results. While consumers continued to spend on leisure and travel, they cut back discretionary spending on apparel and food. Late in the reporting period, we sold a portion of the Portfolio's holdings of Burlington Stores to seek more attractive consumer-related investments.

Did the Portfolio make any significant purchases or sales during the reporting period?

The Portfolio made several significant purchases in the health care and consumer discretionary sectors during the reporting period. Within health care, the Portfolio brought three initial public offerings of bonds from medical device manufacturer Integer Holdings, medical imaging agent manufacturer Lantheus Holdings and biotechnology company TransMedics Group. Both Integer and Lantheus generate significant free cash flow and sell for reasonable valuations. TransMedics appears to have a novel method for storing human organs prior to transplantation, and we believe the company should see strong sales and earnings growth in the coming years. Within the consumer discretionary sector, the Portfolio added to its holdings of cruise operator, Carnival and entertainment company Live Nation. We added to the Carnival position as we believe the company no longer faces the risk of insolvency. In addition, we believe Carnival's convertible bonds have a high coupon, and offer downside protection and upside

participation with the company's common shares. We added to the Portfolio's holdings of Live Nation as the company generates a considerable free cash flow, and its common shares were trading at an attractive valuation.

Several large holdings left the Portfolio either after they matured or were called by the issuer. These included semiconductor company Silicon Laboratories, health insurer Elevance Health, and testing and diagnostics company Danaher. In addition, we reduced the Portfolio's exposure to the energy sector by trimming holdings of oil & gas exploration & production companies EQT and Pioneer Natural Resources. Lastly, we sold the Portfolio's position in satellite television company DISH Network, as we were concerned about the company's ability to refinance its large debt load and meet capital spending requirements.

How did the Portfolio's sector weightings change during the reporting period?

There were no material changes to positioning during the reporting period. The Portfolio increased its exposure to the industrials, consumer staples and utilities sectors. Conversely, the Portfolio decreased its exposure to the energy and health care sectors.

How was the Portfolio positioned at the end of the reporting period?

As of June 30, 2023, the Portfolio held overweight exposure relative to the Index in the energy, health care and consumer staples sectors. As of the same date, the Portfolio held underweight exposure to financials, consumer discretionary and utilities.

The opinions expressed are those of the portfolio manager as of the date of this report and are subject to change. There is no guarantee that any forecasts will come to pass. This material does not constitute investment advice and is not intended as an endorsement of any specific investment.

Not all MainStay VP Portfolios and/or share classes are available under all policies.

Portfolio of Investments June 30, 2023[†](Unaudited)

	Principal Amount	Value
Long-Term Bonds 0.6%		
Corporate Bonds 0.6%		
Biotechnology 0.3%		
Bridgebio Pharma, Inc. 2.50%, due 3/15/27	\$ 6,895,000	\$ 5,431,314
Leisure Time 0.3%		
NCL Corp. Ltd. 5.375%, due 8/1/25	2,860,000	3,918,200
Total Corporate Bonds (Cost \$10,411,950)		9,349,514
Total Long-Term Bonds (Cost \$10,411,950)		9,349,514
Convertible Securities 89.7%		
Convertible Bonds 83.4%		
Airlines 2.6%		
American Airlines Group, Inc. 6.50%, due 7/1/25	6,895,000	8,866,970
JetBlue Airways Corp. 0.50%, due 4/1/26	4,623,000	3,819,774
Southwest Airlines Co. 1.25%, due 5/1/25 (a)	29,005,000	33,363,001
		46,049,745
Auto Manufacturers 2.6%		
Ford Motor Co. (zero coupon), due 3/15/26	32,843,000	36,143,722
Rivian Automotive, Inc. 4.625%, due 3/15/29 (b)	8,583,000	9,430,043
		45,573,765
Beverages 1.5%		
MGP Ingredients, Inc. 1.875%, due 11/15/41	20,955,000	25,921,335
Biotechnology 5.4%		
Alnylam Pharmaceuticals, Inc. 1.00%, due 9/15/27 (b)	5,744,000	5,507,759
BioMarin Pharmaceutical, Inc. 1.25%, due 5/15/27 (a)	37,741,000	38,129,916
Guardant Health, Inc. (zero coupon), due 11/15/27	7,494,000	5,395,405
Halozyne Therapeutics, Inc. 1.00%, due 8/15/28 (b)	18,801,000	17,202,915
Illumina, Inc. (zero coupon), due 8/15/23	19,199,000	19,160,397

	Principal Amount	Value
Biotechnology (continued)		
Ionis Pharmaceuticals, Inc. (zero coupon), due 4/1/26	\$ 9,307,000	\$ 8,824,199
		94,220,591
Commercial Services 3.0%		
Alarm.com Holdings, Inc. (zero coupon), due 1/15/26	3,250,000	2,784,967
Block, Inc. 0.125%, due 3/1/25	20,457,000	19,383,008
Euronet Worldwide, Inc. 0.75%, due 3/15/49 (a)	11,685,000	11,458,603
Repay Holdings Corp. (zero coupon), due 2/1/26 (b)	2,180,000	1,788,908
Sabre GLOB, Inc. 4.00%, due 4/15/25	1,185,000	937,181
Shift4 Payments, Inc. (zero coupon), due 12/15/25	15,202,000	16,585,382
		52,938,049
Computers 2.4%		
Lumentum Holdings, Inc. 0.50%, due 12/15/26	26,640,000	23,639,700
Parsons Corp. 0.25%, due 8/15/25	2,878,000	3,308,261
Western Digital Corp. 1.50%, due 2/1/24 (c)	4,634,000	4,515,833
Zscaler, Inc. 0.125%, due 7/1/25	9,088,000	10,637,504
		42,101,298
Electric 1.8%		
NRG Energy, Inc. 2.75%, due 6/1/48	29,752,000	31,551,996
Energy-Alternate Sources 2.6%		
Array Technologies, Inc. 1.00%, due 12/1/28	8,045,000	9,223,592
Enphase Energy, Inc. (zero coupon), due 3/1/26	16,664,000	15,739,148
NextEra Energy Partners LP (zero coupon), due 11/15/25 (b)	10,860,000	10,072,650
SolarEdge Technologies, Inc. (zero coupon), due 9/15/25	8,449,000	10,062,759
		45,098,149
Entertainment 2.8%		
Live Nation Entertainment, Inc. 3.125%, due 1/15/29 (b)	16,943,000	18,713,543

The notes to the financial statements are an integral part of, and should be read in conjunction with, the financial statements.

Portfolio of Investments June 30, 2023^{†^} (Unaudited) (continued)

	Principal Amount	Value
Convertible Bonds (continued)		
Entertainment (continued)		
Marriott Vacations Worldwide Corp. (zero coupon), due 1/15/26	\$ 3,060,000	\$ 2,850,390
Vail Resorts, Inc. (zero coupon), due 1/1/26	30,094,000	<u>27,028,174</u>
		<u>48,592,107</u>
Food 1.6%		
Chefs' Warehouse, Inc. (The) 2.375%, due 12/15/28 (b)	11,991,000	12,639,308
Post Holdings, Inc. 2.50%, due 8/15/27 (b)	15,651,000	<u>15,857,593</u>
		<u>28,496,901</u>
Healthcare-Products 8.9%		
CONMED Corp. 2.25%, due 6/15/27	24,108,000	27,025,068
Exact Sciences Corp. 0.375%, due 3/1/28	21,770,000	22,383,388
Haemonetics Corp. (zero coupon), due 3/1/26	9,354,000	8,006,065
Integer Holdings Corp. 2.125%, due 2/15/28 (b)	14,763,000	17,464,629
Integra LifeSciences Holdings Corp. 0.50%, due 8/15/25	8,831,000	8,106,858
Lantheus Holdings, Inc. 2.625%, due 12/15/27 (b)	25,213,000	32,791,823
NuVasive, Inc. 0.375%, due 3/15/25	12,958,000	11,726,990
Omniceil, Inc. 0.25%, due 9/15/25	10,024,000	10,189,396
TransMedics Group, Inc. 1.50%, due 6/1/28 (b)	15,928,000	<u>18,206,201</u>
		<u>155,900,418</u>
Healthcare-Services 1.3%		
Teladoc Health, Inc. 1.25%, due 6/1/27	28,389,000	<u>22,711,200</u>
Internet 10.2%		
Booking Holdings, Inc. 0.75%, due 5/1/25	11,000,000	16,541,800
Etsy, Inc. 0.25%, due 6/15/28	26,578,000	20,664,395
Expedia Group, Inc. (zero coupon), due 2/15/26 (a)	2,758,000	2,423,730
Match Group Financeco 2, Inc. 0.875%, due 6/15/26 (b)	13,160,000	11,859,927

	Principal Amount	Value
Internet (continued)		
Okta, Inc. 0.125%, due 9/1/25	\$ 7,194,000	\$ 6,539,346
Palo Alto Networks, Inc. 0.375%, due 6/1/25	11,770,000	30,348,945
0.75%, due 7/1/23	13,152,000	35,865,504
Q2 Holdings, Inc. 0.75%, due 6/1/26	2,800,000	2,433,027
Snap, Inc. (zero coupon), due 5/1/27	10,555,000	7,863,475
0.125%, due 3/1/28	12,850,000	9,168,475
Uber Technologies, Inc. (zero coupon), due 12/15/25	14,485,000	13,283,129
Ziff Davis, Inc. 1.75%, due 11/1/26 (b)	3,285,000	3,079,688
Zillow Group, Inc. 2.75%, due 5/15/25	17,202,000	<u>18,130,908</u>
		<u>178,202,349</u>
Leisure Time 1.7%		
Carnival Corp. 5.75%, due 12/1/27 (b)	10,962,000	18,284,616
NCL Corp. Ltd. 6.00%, due 5/15/24	1,756,000	2,907,058
Royal Caribbean Cruises Ltd. 6.00%, due 8/15/25 (b)	3,850,000	<u>8,481,550</u>
		<u>29,673,224</u>
Machinery-Diversified 1.2%		
Chart Industries, Inc. 1.00%, due 11/15/24	7,813,000	<u>21,458,404</u>
Media 2.4%		
Liberty Broadband Corp. 3.125%, due 3/31/53 (b)	9,771,000	9,580,465
Liberty Media Corp. (b) 2.25%, due 8/15/27	14,461,000	15,603,419
3.75%, due 3/15/28	14,595,000	<u>15,981,525</u>
		<u>41,165,409</u>
Oil & Gas 6.2%		
EQT Corp. 1.75%, due 5/1/26	16,102,000	45,383,526
Permian Resources Operating LLC 3.25%, due 4/1/28	14,611,000	28,184,312
Pioneer Natural Resources Co. 0.25%, due 5/15/25	15,534,000	<u>34,231,941</u>
		<u>107,799,779</u>

The notes to the financial statements are an integral part of, and should be read in conjunction with, the financial statements.

	Principal Amount	Value
Convertible Bonds (continued)		
Oil & Gas Services 3.3%		
Helix Energy Solutions Group, Inc.		
6.75%, due 2/15/26	\$ 22,085,000	\$ 29,284,710
Oil States International, Inc.		
4.75%, due 4/1/26	26,829,000	<u>28,438,815</u>
		<u>57,723,525</u>
Pharmaceuticals 2.4%		
Dexcom, Inc.		
0.25%, due 11/15/25 (a)	16,942,000	18,169,932
Mirum Pharmaceuticals, Inc.		
4.00%, due 5/1/29 (b)	7,152,000	8,056,728
Pacira BioSciences, Inc.		
0.75%, due 8/1/25	17,427,000	<u>16,207,110</u>
		<u>42,433,770</u>
Real Estate Investment Trusts 0.9%		
Pebblebrook Hotel Trust		
1.75%, due 12/15/26	5,863,000	4,978,415
Summit Hotel Properties, Inc.		
1.50%, due 2/15/26	13,238,000	<u>11,311,029</u>
		<u>16,289,444</u>
Retail 2.0%		
Burlington Stores, Inc.		
2.25%, due 4/15/25	9,554,000	9,977,959
Cheesecake Factory, Inc. (The)		
0.375%, due 6/15/26	9,488,000	8,005,500
Patrick Industries, Inc.		
1.75%, due 12/1/28	17,313,000	<u>16,897,488</u>
		<u>34,880,947</u>
Semiconductors 4.8%		
Impinj, Inc.		
1.125%, due 5/15/27	4,870,000	5,290,059
Microchip Technology, Inc.		
0.125%, due 11/15/24	35,083,000	39,863,059
ON Semiconductor Corp.		
0.50%, due 3/1/29 (b)	24,345,000	27,615,490
Wolfspeed, Inc.		
0.25%, due 2/15/28	9,771,000	7,533,441
1.875%, due 12/1/29 (b)	4,785,000	<u>3,713,160</u>
		<u>84,015,209</u>
Software 7.3%		
Akamai Technologies, Inc.		
0.375%, due 9/1/27	18,297,000	17,761,632
Bentley Systems, Inc.		
0.125%, due 1/15/26	3,445,000	3,560,560

	Principal Amount	Value
Software (continued)		
BILL Holdings, Inc.		
(zero coupon), due 12/1/25	\$ 5,190,000	\$ 5,452,095
Datadog, Inc.		
0.125%, due 6/15/25	10,168,000	12,669,328
DigitalOcean Holdings, Inc.		
(zero coupon), due 12/1/26	6,410,000	5,038,819
Dropbox, Inc.		
(zero coupon), due 3/1/28	12,063,000	11,598,574
Envestnet, Inc.		
2.625%, due 12/1/27 (b)	14,965,000	15,773,110
Everbridge, Inc.		
0.125%, due 12/15/24	13,318,000	12,136,027
Model N, Inc.		
1.875%, due 3/15/28 (b)	11,215,000	11,825,096
MongoDB, Inc.		
0.25%, due 1/15/26	7,540,000	15,025,335
Splunk, Inc.		
1.125%, due 9/15/25	17,442,000	<u>17,485,605</u>
		<u>128,326,181</u>
Telecommunications 3.9%		
Infinera Corp.		
2.50%, due 3/1/27	4,490,000	4,173,523
InterDigital, Inc.		
2.00%, due 6/1/24	2,860,000	3,469,429
Nice Ltd.		
(zero coupon), due 9/15/25 (a)	48,248,000	46,984,164
Viavi Solutions, Inc.		
1.00%, due 3/1/24	14,133,000	<u>14,071,522</u>
		<u>68,698,638</u>
Trucking & Leasing 0.6%		
Greenbrier Cos., Inc. (The)		
2.875%, due 4/15/28	9,472,000	<u>9,372,544</u>
Total Convertible Bonds		
(Cost \$1,432,186,940)		<u>1,459,194,977</u>
Shares		
Convertible Preferred Stocks 6.3%		
Banks 1.6%		
Bank of America Corp.		
Series L		
7.25% (d)	11,636	13,635,297
Wells Fargo & Co.		
Series L		
7.50% (d)	12,264	<u>14,128,128</u>
		<u>27,763,425</u>

The notes to the financial statements are an integral part of, and should be read in conjunction with, the financial statements.

Portfolio of Investments June 30, 2023^{†^} (Unaudited) (continued)

	Shares	Value
Convertible Preferred Stocks (continued)		
Capital Markets 1.1%		
KKR Group Co., Inc.		
Series C		
6.00%	283,400	\$ 18,732,740
Construction & Engineering 0.4%		
Fluor Corp.		
6.50% (d)	4,720	6,595,398
Electric Utilities 1.9%		
NextEra Energy, Inc.		
6.926%	250,000	11,322,500
PG&E Corp.		
5.50%	154,100	23,039,491
		34,361,991
Independent Power and Renewable Electricity Producers 0.7%		
AES Corp. (The)		
6.875%	150,600	12,291,972
Machinery 0.6%		
Chart Industries, Inc.		
Series B		
6.75%	172,700	11,249,678
Total Convertible Preferred Stocks		
(Cost \$108,858,316)		110,995,204
Total Convertible Securities		
(Cost \$1,541,045,256)		1,570,190,181
Common Stocks 1.9%		
Energy Equipment & Services 0.6%		
Weatherford International plc (e)		
	157,538	10,463,674
Life Sciences Tools & Services 1.0%		
Danaher Corp.		
	76,813	18,435,120
Oil, Gas & Consumable Fuels 0.3%		
Kosmos Energy Ltd. (e)		
	772,131	4,625,065
Total Common Stocks		
(Cost \$30,321,361)		33,523,859
Short-Term Investments 9.8%		
Affiliated Investment Company 7.5%		
MainStay U.S. Government Liquidity		
Fund, 5.06% (f)(g)	130,717,939	130,717,939

	Shares	Value
Unaffiliated Investment Companies 2.3%		
Goldman Sachs Financial Square		
Government Fund, 5.122% (g)(h)	10,000,000	\$ 10,000,000
Invesco Government & Agency		
Portfolio, 5.158% (g)(h)	26,328,209	26,328,209
RBC U.S. Government Money Market		
Fund, 5.081% (g)(h)	3,000,000	3,000,000
State Street Institutional		
U.S. Government Money Market		
Fund, 5.097% (g)(h)	2,000,000	2,000,000
Total Unaffiliated Investment		
Companies		
(Cost \$41,328,209)		41,328,209
Total Short-Term Investments		
(Cost \$172,046,148)		172,046,148
Total Investments		
(Cost \$1,753,824,715)	102.0%	1,785,109,702
Other Assets, Less Liabilities		
	(2.0)	(35,253,099)
Net Assets		
	100.0%	\$ 1,749,856,603

† Percentages indicated are based on Portfolio net assets.

^ Industry classifications may be different than those used for compliance monitoring purposes.

- (a) All or a portion of this security was held on loan. As of June 30, 2023, the aggregate market value of securities on loan was \$40,204,755. The Portfolio received cash collateral with a value of \$41,328,209. (See Note 2(G))
- (b) May be sold to institutional investors only under Rule 144A or securities offered pursuant to Section 4(a)(2) of the Securities Act of 1933, as amended.
- (c) Step coupon—Rate shown was the rate in effect as of June 30, 2023.
- (d) Security is perpetual and, thus, does not have a predetermined maturity date. The date shown, if applicable, reflects the next call date.
- (e) Non-income producing security.
- (f) As of June 30, 2023, the Portfolio's ownership exceeds 5% of the outstanding shares of the Underlying Portfolio's share class.
- (g) Current yield as of June 30, 2023.
- (h) Represents a security purchased with cash collateral received for securities on loan.

Investments in Affiliates (in 000's)

Investments in issuers considered to be affiliate(s) of the Portfolio during the six-month period ended June 30, 2023 for purposes of Section 2(a)(3) of the Investment Company Act of 1940, as amended, were as follows:

Affiliated Investment Companies	Value, Beginning of Period	Purchases at Cost	Proceeds from Sales	Net Realized Gain/(Loss) on Sales	Change in Unrealized Appreciation/ (Depreciation)	Value, End of Period	Dividend Income	Other Distributions	Shares End of Period
MainStay U.S. Government Liquidity Fund	\$ 87,784	\$ 257,531	\$ (214,597)	\$ —	\$ —	\$ 130,718	\$ 2,793	\$ —	130,718

The following is a summary of the fair valuations according to the inputs used as of June 30, 2023, for valuing the Portfolio's assets:

Description	Quoted Prices in Active Markets for Identical Assets (Level 1)	Significant Other Observable Inputs (Level 2)	Significant Unobservable Inputs (Level 3)	Total
Asset Valuation Inputs				
Investments in Securities (a)				
Long-Term Bonds				
Corporate Bonds	\$ —	\$ 9,349,514	\$ —	\$ 9,349,514
Total Corporate Bonds	—	9,349,514	—	9,349,514
Convertible Securities				
Convertible Bonds	—	1,459,194,977	—	1,459,194,977
Convertible Preferred Stocks	104,399,806	6,595,398	—	110,995,204
Total Convertible Securities	104,399,806	1,465,790,375	—	1,570,190,181
Common Stocks	33,523,859	—	—	33,523,859
Short-Term Investments				
Affiliated Investment Company	130,717,939	—	—	130,717,939
Unaffiliated Investment Companies	41,328,209	—	—	41,328,209
Total Short-Term Investments	172,046,148	—	—	172,046,148
Total Investments in Securities	\$ 309,969,813	\$ 1,475,139,889	\$ —	\$ 1,785,109,702

(a) For a complete listing of investments and their industries, see the Portfolio of Investments.

Statement of Assets and Liabilities as of June 30, 2023 (Unaudited)

Assets

Investment in unaffiliated securities, at value (identified cost \$1,623,106,776) including securities on loan of \$40,204,755	\$1,654,391,763
Investment in affiliated investment companies, at value (identified cost \$130,717,939)	130,717,939
Cash	452
Receivables:	
Dividends and interest	4,694,644
Portfolio shares sold	2,608,767
Securities lending	153,330
Other assets	16,309
Total assets	<u>1,792,583,204</u>

Liabilities

Cash collateral received for securities on loan	41,328,209
Payables:	
Manager (See Note 3)	765,884
Portfolio shares redeemed	367,004
NYLIFE Distributors (See Note 3)	187,038
Professional fees	41,877
Custodian	15,299
Shareholder communication	9,807
Accrued expenses	11,483
Total liabilities	<u>42,726,601</u>
Net assets	<u>\$1,749,856,603</u>

Composition of Net Assets

Shares of beneficial interest outstanding (par value of \$.001 per share) unlimited number of shares authorized	\$ 121,138
Additional paid-in-capital	<u>1,717,400,536</u>
	1,717,521,674
Total distributable earnings (loss)	<u>32,334,929</u>
Net assets	<u>\$1,749,856,603</u>

Initial Class

Net assets applicable to outstanding shares	<u>\$823,471,771</u>
Shares of beneficial interest outstanding	<u>56,631,119</u>
Net asset value per share outstanding	<u>\$ 14.54</u>

Service Class

Net assets applicable to outstanding shares	<u>\$918,535,996</u>
Shares of beneficial interest outstanding	<u>63,960,615</u>
Net asset value per share outstanding	<u>\$ 14.36</u>

Service 2 Class

Net assets applicable to outstanding shares	<u>\$ 7,848,836</u>
Shares of beneficial interest outstanding	<u>546,453</u>
Net asset value and offering price per share outstanding	<u>\$ 14.36</u>

Statement of Operations for the six months ended June 30, 2023 (Unaudited)

Investment Income (Loss)

Income

Interest	\$ 8,386,431
Dividends-unaffiliated	3,729,514
Dividends-affiliated	2,793,434
Securities lending, net	<u>1,133,800</u>
Total income	<u>16,043,179</u>

Expenses

Manager (See Note 3)	4,564,676
Distribution/Service—Service Class (See Note 3)	1,100,095
Distribution/Service—Service 2 Class (See Note 3)	8,823
Professional fees	87,951
Shareholder communication	44,886
Trustees	20,557
Custodian	18,507
Shareholder service (See Note 3)	3,529
Miscellaneous	<u>31,441</u>
Total expenses	<u>5,880,465</u>
Net investment income (loss)	<u>10,162,714</u>

Realized and Unrealized Gain (Loss)

Net realized gain (loss) on unaffiliated investments	<u>20,313,638</u>
Net change in unrealized appreciation (depreciation) on unaffiliated investments	<u>65,989,551</u>
Net realized and unrealized gain (loss)	<u>86,303,189</u>
Net increase (decrease) in net assets resulting from operations	<u>\$96,465,903</u>

The notes to the financial statements are an integral part of, and should be read in conjunction with, the financial statements.

Statements of Changes in Net Assets

for the six months ended June 30, 2023 (Unaudited) and the year ended December 31, 2022

	Six months ended June 30, 2023	Year ended December 31, 2022
Increase (Decrease) in Net Assets		
Operations:		
Net investment income (loss)	\$ 10,162,714	\$ 12,372,739
Net realized gain (loss)	20,313,638	(1,458,820)
Net change in unrealized appreciation (depreciation)	<u>65,989,551</u>	<u>(272,476,633)</u>
Net increase (decrease) in net assets resulting from operations	<u>96,465,903</u>	<u>(261,562,714)</u>
Distributions to shareholders:		
Initial Class	(11,547,074)	(119,474,150)
Service Class	(11,935,831)	(135,597,007)
Service 2 Class	<u>(89,382)</u>	<u>(1,046,632)</u>
Total distributions to shareholders	<u>(23,572,287)</u>	<u>(256,117,789)</u>
Capital share transactions:		
Net proceeds from sales of shares	60,479,578	113,733,843
Net asset value of shares issued to shareholders in reinvestment of distributions	23,572,287	256,117,789
Cost of shares redeemed	<u>(68,941,495)</u>	<u>(275,440,951)</u>
Increase (decrease) in net assets derived from capital share transactions	<u>15,110,370</u>	<u>94,410,681</u>
Net increase (decrease) in net assets	88,003,986	(423,269,822)
Net Assets		
Beginning of period	<u>1,661,852,617</u>	<u>2,085,122,439</u>
End of period	<u>\$1,749,856,603</u>	<u>\$1,661,852,617</u>

Financial Highlights selected per share data and ratios

Initial Class	Six months ended June 30, 2023*	Year Ended December 31,				
		2022	2021	2020	2019	2018
Net asset value at beginning of period	\$ 13.93	\$ 18.68	\$ 18.17	\$ 13.60	\$ 12.31	\$ 13.29
Net investment income (loss) (a)	0.09	0.13	0.10	0.10	0.13	0.17
Net realized and unrealized gain (loss)	0.73	(2.49)	1.56	4.74	2.56	(0.41)
Total from investment operations	0.82	(2.36)	1.66	4.84	2.69	(0.24)
Less distributions:						
From net investment income	(0.21)	(0.55)	(0.22)	(0.11)	(0.20)	(0.23)
From net realized gain on investments	—	(1.84)	(0.93)	(0.16)	(1.20)	(0.51)
Total distributions	(0.21)	(2.39)	(1.15)	(0.27)	(1.40)	(0.74)
Net asset value at end of period	\$ 14.54	\$ 13.93	\$ 18.68	\$ 18.17	\$ 13.60	\$ 12.31
Total investment return (b)	5.90%	(12.67)%	9.25%	36.04%	22.46%	(2.27)%
Ratios (to average net assets)/Supplemental Data:						
Net investment income (loss)	1.34%††	0.82%	0.51%	0.70%	0.94%	1.24%
Net expenses (c)	0.57%††	0.57%	0.56%	0.61%	0.61%	0.61%
Portfolio turnover rate	20%	14%	41%	49%	26%	43%
Net assets at end of period (in 000's)	\$ 823,472	\$ 782,970	\$ 946,696	\$ 370,733	\$ 202,104	\$ 177,136

* Unaudited.

†† Annualized.

(a) Per share data based on average shares outstanding during the period.

(b) Total return does not reflect any deduction of sales charges, mortality and expense charges, contract charges or administrative charges. For periods of less than one year, total return is not annualized.

(c) In addition to the fees and expenses which the Portfolio bears directly, it also indirectly bears a pro-rata share of the fees and expenses of the underlying funds in which it invests. Such indirect expenses are not included in the above expense ratios.

Service Class	Six months ended June 30, 2023*	Year Ended December 31,				
		2022	2021	2020	2019	2018
Net asset value at beginning of period	\$ 13.76	\$ 18.48	\$ 17.99	\$ 13.47	\$ 12.21	\$ 13.18
Net investment income (loss) (a)	0.08	0.09	0.05	0.06	0.09	0.13
Net realized and unrealized gain (loss)	0.71	(2.46)	1.54	4.69	2.53	(0.40)
Total from investment operations	0.79	(2.37)	1.59	4.75	2.62	(0.27)
Less distributions:						
From net investment income	(0.19)	(0.51)	(0.17)	(0.07)	(0.16)	(0.19)
From net realized gain on investments	—	(1.84)	(0.93)	(0.16)	(1.20)	(0.51)
Total distributions	(0.19)	(2.35)	(1.10)	(0.23)	(1.36)	(0.70)
Net asset value at end of period	\$ 14.36	\$ 13.76	\$ 18.48	\$ 17.99	\$ 13.47	\$ 12.21
Total investment return (b)	5.77%	(12.89)%	8.98%	35.70%	22.15%	(2.52)%
Ratios (to average net assets)/Supplemental Data:						
Net investment income (loss)	1.09%††	0.57%	0.25%	0.44%	0.69%	0.99%
Net expenses (c)	0.82%††	0.82%	0.81%	0.86%	0.86%	0.86%
Portfolio turnover rate	20%	14%	41%	49%	26%	43%
Net assets at end of period (in 000's)	\$ 918,536	\$ 872,109	\$ 1,129,151	\$ 982,863	\$ 752,670	\$ 592,673

* Unaudited.

†† Annualized.

(a) Per share data based on average shares outstanding during the period.

(b) Total return does not reflect any deduction of sales charges, mortality and expense charges, contract charges or administrative charges. For periods of less than one year, total return is not annualized.

(c) In addition to the fees and expenses which the Portfolio bears directly, it also indirectly bears a pro-rata share of the fees and expenses of the underlying funds in which it invests. Such indirect expenses are not included in the above expense ratios.

Financial Highlights selected per share data and ratios

Service Class 2	Six months ended	Year Ended December 31,				
	June 30, 2023*	2022	2021	2020	2019	2018
Net asset value at beginning of period	\$ 13.76	\$ 18.48	\$ 18.00	\$ 13.47	\$ 12.21	\$ 13.18
Net investment income (loss) (a)	0.07	0.08	0.03	0.05	0.08	0.12
Net realized and unrealized gain (loss)	0.71	(2.47)	1.53	4.70	2.53	(0.40)
Total from investment operations	0.78	(2.39)	1.56	4.75	2.61	(0.28)
Less distributions:						
From net investment income	(0.18)	(0.49)	(0.15)	(0.06)	(0.15)	(0.18)
From net realized gain on investments	—	(1.84)	(0.93)	(0.16)	(1.20)	(0.51)
Total distributions	(0.18)	(2.33)	(1.08)	(0.22)	(1.35)	(0.69)
Net asset value at end of period	\$ 14.36	\$ 13.76	\$ 18.48	\$ 18.00	\$ 13.47	\$ 12.21
Total investment return (b)	5.72%	(12.97)%	8.87%	35.57%	22.03%	(2.59)%
Ratios (to average net assets)/Supplemental Data:						
Net investment income (loss)	1.00%††	0.47%	0.16%	0.32%	0.56%	0.88%
Net expenses (c)	0.92%††	0.92%	0.91%	0.96%	0.96%	0.96%
Portfolio turnover rate	20%	14%	41%	49%	26%	43%
Net assets at end of period (in 000's)	\$ 7,849	\$ 6,774	\$ 9,275	\$ 8,196	\$ 6,555	\$ 3,016

* Unaudited.

†† Annualized.

(a) Per share data based on average shares outstanding during the period.

(b) Total return does not reflect any deduction of sales charges, mortality and expense charges, contract charges or administrative charges. For periods of less than one year, total return is not annualized.

(c) In addition to the fees and expenses which the Portfolio bears directly, it also indirectly bears a pro-rata share of the fees and expenses of the underlying funds in which it invests. Such indirect expenses are not included in the above expense ratios.

Notes to Financial Statements (Unaudited)

Note 1—Organization and Business

MainStay VP Funds Trust (the "Fund") was organized as a Delaware statutory trust on February 1, 2011. The Fund is registered under the Investment Company Act of 1940, as amended (the "1940 Act"), as an open-end management investment company. The Fund is comprised of thirty-one separate series (collectively referred to as the "Portfolios"). These financial statements and notes relate to the MainStay VP MacKay Convertible Portfolio (the "Portfolio"), a "diversified" portfolio, as that term is defined in the 1940 Act, as interpreted or modified by regulatory authorities having jurisdiction, from time to time.

Shares of the Portfolio are currently offered to certain separate accounts to fund variable annuity policies and variable universal life insurance policies issued by New York Life Insurance and Annuity Corporation ("NYLIAC"), a wholly-owned subsidiary of New York Life Insurance Company ("New York Life") and may also be offered to fund variable annuity policies and variable universal life insurance policies issued by other insurance companies. NYLIAC allocates shares of the Portfolio to, among others, certain NYLIAC separate accounts. Service 2 Class shares of the Portfolio are currently offered to certain separate accounts to fund variable annuity policies and variable universal life insurance policies issued by participating insurance companies. Shares of the Portfolio are also offered to the MainStay VP Conservative Allocation Portfolio, MainStay VP Moderate Allocation Portfolio, MainStay VP Growth Allocation Portfolio and MainStay VP Equity Allocation Portfolio, which operate as "funds-of-funds," and other variable insurance funds.

The following table lists the Portfolio's share classes that have been registered and commenced operations:

Class	Commenced Operations
Initial Class	October 1, 1996
Service Class	June 5, 2003
Service 2 Class	April 26, 2016

Shares of the Portfolio are offered and are redeemed at a price equal to their respective net asset value ("NAV") per share. No sales or redemption charge is applicable to the purchase or redemption of the Portfolio's shares. Under the terms of the Fund's multiple class plan, adopted pursuant to Rule 18f-3 under the 1940 Act, the classes differ in that, among other things, each of Service Class and Service 2 Class shares of the Portfolio pay a combined distribution and service fee of 0.25% of average daily net assets attributable to such Class's shares of the Portfolio to the Distributor (as defined in Note 3(B)) pursuant to a plan adopted in accordance with Rule 12b-1 under the 1940 Act. Contract owners of variable annuity contracts purchased after June 2, 2003, are permitted to invest only in the Service Class and Service 2 Class shares.

The Portfolio's investment objective is to seek capital appreciation together with current income.

Note 2—Significant Accounting Policies

The Portfolio is an investment company and accordingly follows the investment company accounting and reporting guidance of the Financial Accounting Standards Board ("FASB") Accounting Standards Codification *Topic 946 Financial Services—Investment Companies*. The Portfolio prepares its financial statements in accordance with generally accepted accounting principles ("GAAP") in the United States of America and follows the significant accounting policies described below.

(A) Securities Valuation. Investments are usually valued as of the close of regular trading on the New York Stock Exchange (the "Exchange") (usually 4:00 p.m. Eastern time) on each day the Portfolio is open for business ("valuation date").

Pursuant to Rule 2a-5 under the 1940 Act, the Board of Trustees of the Fund (the "Board") has designated New York Life Investment Management LLC ("New York Life Investments" or the "Manager") as its Valuation Designee (the "Valuation Designee"). The Valuation Designee is responsible for performing fair valuations relating to all investments in the Portfolio's portfolio for which market quotations are not readily available; periodically assessing and managing material valuation risks; establishing and applying fair value methodologies; testing fair valuation methodologies; evaluating and overseeing pricing services; ensuring appropriate segregation of valuation and portfolio management functions; providing quarterly, annual and prompt reporting to the Board, as appropriate; identifying potential conflicts of interest; and maintaining appropriate records. The Valuation Designee has established a valuation committee ("Valuation Committee") to assist in carrying out the Valuation Designee's responsibilities and establish prices of securities for which market quotations are not readily available. The Portfolio's and the Valuation Designee's policies and procedures ("Valuation Procedures") govern the Valuation Designee's selection and application of methodologies for determining and calculating the fair value of Portfolio investments. The Valuation Designee may value the Portfolio's portfolio securities for which market quotations are not readily available and other Portfolio assets utilizing inputs from pricing services and other third-party sources. The Valuation Committee meets (in person, via electronic mail or via teleconference) on an ad-hoc basis to determine fair valuations and on a quarterly basis to review fair value events with respect to certain securities for which market quotations are not readily available, including valuation risks and back-testing results, and preview reports to the Board.

The Valuation Committee establishes prices of securities for which market quotations are not readily available based on such methodologies and measurements on a regular basis after considering information that is reasonably available and deemed relevant by the Valuation Committee. The Board shall oversee the Valuation Designee and review fair valuation materials on a prompt, quarterly and annual basis and approve proposed revisions to the Valuation Procedures.

Investments for which market quotations are not readily available are valued at fair value as determined in good faith pursuant to the Valuation Procedures. A market quotation is readily available only when that

Notes to Financial Statements (Unaudited) (continued)

quotation is a quoted price (unadjusted) in active markets for identical investments that the Portfolio can access at the measurement date, provided that a quotation will not be readily available if it is not reliable. "Fair value" is defined as the price the Portfolio would reasonably expect to receive upon selling an asset or liability in an orderly transaction to an independent buyer in the principal or most advantageous market for the asset or liability. Fair value measurements are determined within a framework that establishes a three-tier hierarchy that maximizes the use of observable market data and minimizes the use of unobservable inputs to establish a classification of fair value measurements for disclosure purposes. "Inputs" refer broadly to the assumptions that market participants would use in pricing the asset or liability, including assumptions about risk, such as the risk inherent in a particular valuation technique used to measure fair value using a pricing model and/or the risk inherent in the inputs for the valuation technique. Inputs may be observable or unobservable. Observable inputs reflect the assumptions market participants would use in pricing the asset or liability based on market data obtained from sources independent of the Portfolio. Unobservable inputs reflect the Portfolio's own assumptions about the assumptions market participants would use in pricing the asset or liability based on the information available. The inputs or methodology used for valuing assets or liabilities may not be an indication of the risks associated with investing in those assets or liabilities. The three-tier hierarchy of inputs is summarized below.

- Level 1—quoted prices (unadjusted) in active markets for an identical asset or liability
- Level 2—other significant observable inputs (including quoted prices for a similar asset or liability in active markets, interest rates and yield curves, prepayment speeds, credit risk, etc.)
- Level 3—significant unobservable inputs (including the Portfolio's own assumptions about the assumptions that market participants would use in measuring fair value of an asset or liability)

The level of an asset or liability within the fair value hierarchy is based on the lowest level of an input, both individually and in the aggregate, that is significant to the fair value measurement. The aggregate value by input level of the Portfolio's assets and liabilities as of June 30, 2023, is included at the end of the Portfolio of Investments.

The Portfolio may use third-party vendor evaluations, whose prices may be derived from one or more of the following standard inputs, among others:

• Benchmark yields	• Reported trades
• Broker/dealer quotes	• Issuer spreads
• Two-sided markets	• Benchmark securities
• Bids/offers	• Reference data (corporate actions or material event notices)
• Industry and economic events	• Comparable bonds
• Monthly payment information	

An asset or liability for which a market quotation is not readily available is valued by methods deemed reasonable in good faith by the Valuation Committee, following the Valuation Procedures to represent fair value. Under these procedures, the Valuation Designee generally uses a market-based approach which may use related or comparable assets or liabilities, recent transactions, market multiples, book values and other relevant information. The Valuation Designee may also use an income-based valuation approach in which the anticipated future cash flows of the asset or liability are discounted to calculate fair value. Discounts may also be applied due to the nature and/or duration of any restrictions on the disposition of the asset or liability. Fair value represents a good faith approximation of the value of a security. Fair value determinations involve the consideration of a number of subjective factors, an analysis of applicable facts and circumstances and the exercise of judgment. As a result, it is possible that the fair value for a security determined in good faith in accordance with the Valuation Procedures may differ from valuations for the same security determined for other funds using their own valuation procedures. Although the Valuation Procedures are designed to value a security at the price the Portfolio may reasonably expect to receive upon the security's sale in an orderly transaction, there can be no assurance that any fair value determination thereunder would, in fact, approximate the amount that the Portfolio would actually realize upon the sale of the security or the price at which the security would trade if a reliable market price were readily available. During the six-month period ended June 30, 2023, there were no material changes to the fair value methodologies.

Securities which may be valued in this manner include, but are not limited to: (i) a security for which trading has been halted or suspended or otherwise does not have a readily available market quotation on a given day; (ii) a debt security that has recently gone into default and for which there is not a current market quotation; (iii) a security of an issuer that has entered into a restructuring; (iv) a security that has been delisted from a national exchange; (v) a security subject to trading collars for which no or limited trading takes place; and (vi) a security whose principal market has been temporarily closed at a time when, under normal conditions, it would be open. Securities valued in this manner are generally categorized as Level 2 or 3 in the hierarchy.

Equity securities are valued at the last quoted sales prices as of the close of regular trading on the relevant exchange on each valuation date. Securities that are not traded on the valuation date are valued at the mean of the last quoted bid and ask prices. Prices are normally taken from the principal market in which each security trades. These securities are generally categorized as Level 1 in the hierarchy.

Certain convertible preferred stocks may be valued utilizing evaluated prices based on market inputs obtained from the pricing vendor and are generally categorized as Level 2 in the hierarchy. Securities that were fair valued in such a manner as of June 30, 2023, are shown in the Portfolio of Investments.

Investments in mutual funds, including money market funds, are valued at their respective NAVs at the close of business each day on the valuation date. These securities are generally categorized as Level 1 in the hierarchy.

Debt securities (other than convertible and municipal bonds) are valued at the evaluated bid prices (evaluated mean prices in the case of convertible and municipal bonds) supplied by a pricing agent or broker selected by the Valuation Designee, in consultation with the Subadvisor. The evaluations are market-based measurements processed through a pricing application and represents the pricing agent's good faith determination as to what a holder may receive in an orderly transaction under market conditions. The rules-based logic utilizes valuation techniques that reflect participants' assumptions and vary by asset class and per methodology, maximizing the use of relevant observable data including quoted prices for similar assets, benchmark yield curves and market corroborated inputs. The evaluated bid or mean prices are deemed by the Valuation Designee, in consultation with the Subadvisor, to be representative of market values at the regular close of trading of the Exchange on each valuation date. Debt securities purchased on a delayed delivery basis are marked to market daily until settlement at the forward settlement date. Debt securities, including corporate bonds, U.S. government and federal agency bonds, municipal bonds, foreign bonds, convertible bonds, asset-backed securities and mortgage-backed securities are generally categorized as Level 2 in the hierarchy.

Temporary cash investments acquired in excess of 60 days to maturity at the time of purchase are valued using the latest bid prices or using valuations based on a matrix system (which considers such factors as security prices, yields, maturities and ratings), both as furnished by independent pricing services. Temporary cash investments that mature in 60 days or less at the time of purchase ("Short-Term Investments") are valued using the amortized cost method of valuation, unless the use of such method would be inappropriate. The amortized cost method involves valuing a security at its cost on the date of purchase and thereafter assuming a constant amortization to maturity of the difference between such cost and the value on maturity date. Amortized cost approximates the current fair value of a security. Securities valued using the amortized cost method are not valued using quoted prices in an active market and are generally categorized as Level 2 in the hierarchy.

The information above is not intended to reflect an exhaustive list of the methodologies that may be used to value portfolio investments. The Valuation Procedures permit the use of a variety of valuation methodologies in connection with valuing portfolio investments. The methodology used for a specific type of investment may vary based on the market data available or other considerations. The methodologies summarized above may not represent the specific means by which portfolio investments are valued on any particular business day.

(B) Income Taxes. The Portfolio's policy is to comply with the requirements of the Internal Revenue Code of 1986, as amended (the "Internal Revenue Code"), applicable to regulated investment companies

and to distribute all of its taxable income to the shareholders of the Portfolio within the allowable time limits.

The Manager evaluates the Portfolio's tax positions to determine if the tax positions taken meet the minimum recognition threshold in connection with accounting for uncertainties in income tax positions taken or expected to be taken for the purposes of measuring and recognizing tax liabilities in the financial statements. Recognition of tax benefits of an uncertain tax position is permitted only to the extent the position is "more likely than not" to be sustained assuming examination by taxing authorities. The Manager analyzed the Portfolio's tax positions taken on federal, state and local income tax returns for all open tax years (for up to three tax years) and has concluded that no provisions for federal, state and local income tax are required in the Portfolio's financial statements. The Portfolio's federal, state and local income tax and federal excise tax returns for tax years for which the applicable statutes of limitations have not expired are subject to examination by the Internal Revenue Service and state and local departments of revenue.

(C) Dividends and Distributions to Shareholders. Dividends and distributions are recorded on the ex-dividend date. The Portfolio intends to declare and pay dividends from net investment income, if any, at least quarterly and distributions from net realized capital and currency gains, if any, at least annually. All dividends and distributions are reinvested at NAV in the same class of shares of the Portfolio. Dividends and distributions to shareholders are determined in accordance with federal income tax regulations and may differ from determinations using GAAP.

(D) Security Transactions and Investment Income. The Portfolio records security transactions on the trade date. Realized gains and losses on security transactions are determined using the identified cost method. Dividend income is recognized on the ex-dividend date, net of any foreign tax withheld at the source, and interest income is accrued as earned using the effective interest rate method. Distributions received from real estate investment trusts may be classified as dividends, capital gains and/or return of capital. Discounts and premiums on securities purchased for the Portfolio are accreted and amortized, respectively, on the effective interest rate method. Premium associated with the conversion feature on a convertible bond is not amortized.

Investment income and realized and unrealized gains and losses on investments of the Portfolio are allocated pro rata to the separate classes of shares based upon their relative net assets on the date the income is earned or realized and unrealized gains and losses are incurred.

The Portfolio may place a debt security on non-accrual status and reduce related interest income by ceasing current accruals and writing off all or a portion of any interest receivables when the collection of all or a portion of such interest has become doubtful. A debt security is removed from non-accrual status when the issuer resumes interest payments or when collectability of interest is reasonably assured.

(E) Expenses. Expenses of the Fund are allocated to the individual Portfolios in proportion to the net assets of the respective Portfolios when the expenses are incurred, except where direct allocations of expenses

Notes to Financial Statements (Unaudited) (continued)

can be made. Expenses (other than fees incurred under the distribution and service plans and shareholder service plans, further discussed in Note 3(B), which are charged directly to the Service Class and Service 2 Class shares, as applicable) are allocated to separate classes of shares pro rata based upon their relative net assets on the date the expenses are incurred. The expenses borne by the Portfolio, including those of related parties to the Portfolio, are shown in the Statement of Operations.

Additionally, the Portfolio may invest in mutual funds, which are subject to management fees and other fees that may cause the costs of investing in mutual funds to be greater than the costs of owning the underlying securities directly. These indirect expenses of mutual funds are not included in the amounts shown as expenses in the Statement of Operations or in the expense ratios included in the Financial Highlights.

(F) Use of Estimates. In preparing financial statements in conformity with GAAP, the Manager makes estimates and assumptions that affect the reported amounts and disclosures in the financial statements. Actual results could differ from those estimates and assumptions.

(G) Securities Lending. In order to realize additional income, the Portfolio may engage in securities lending, subject to the limitations set forth in the 1940 Act and relevant guidance by the staff of the Securities and Exchange Commission ("SEC"). If the Portfolio engages in securities lending, the Portfolio will lend through its custodian, JPMorgan Chase Bank, N.A., ("JPMorgan"), acting as securities lending agent on behalf of the Portfolio. Under the current arrangement, JPMorgan will manage the Portfolio's collateral in accordance with the securities lending agency agreement between the Portfolio and JPMorgan, and indemnify the Portfolio against counterparty risk. The loans will be collateralized by cash (which may be invested in a money market fund) and/or non-cash collateral (which may include U.S. Treasury securities and/or U.S. government agency securities issued or guaranteed by the United States government or its agencies or instrumentalities) at least equal at all times to the market value of the securities loaned. Non-cash collateral held at year end is segregated and cannot be transferred by the Portfolio. The Portfolio bears the risk of delay in recovery of, or loss of rights in, the securities loaned. The Portfolio may also record a realized gain or loss on securities deemed sold due to a borrower's inability to return securities on loan. The Portfolio bears the risk of any loss on investment of cash collateral. The Portfolio will receive compensation for lending its securities in the form of fees or it will retain a portion of interest earned on the investment of any cash collateral. The Portfolio will also continue to receive interest and dividends on the securities loaned and any gain or loss in the market price of the securities loaned that may occur during the term of the loan will be for the account of the Portfolio. Income earned from securities lending activities, if any, is reflected in the Statement of Operations. Securities on loan as of June 30, 2023, are shown in the Portfolio of Investments.

(H) Debt and Convertible Securities Risk. The ability of issuers of debt securities held by the Portfolio to meet their obligations may be affected by, among other things, economic or political developments in a

specific country, industry or region. Debt securities are also subject to the risks associated with changes in interest rates.

Convertible securities may be subordinate to other securities. In part, the total return for a convertible security depends upon the performance of the underlying stock into which it can be converted. Also, issuers of convertible securities are often not as strong financially as those issuing securities with higher credit ratings, are more likely to encounter financial difficulties and typically are more vulnerable to changes in the economy, such as a recession or a sustained period of rising interest rates, which could affect their ability to make interest and principal payments.

(I) Indemnifications. Under the Fund's organizational documents, its officers and trustees are indemnified against certain liabilities that may arise out of performance of their duties to the Fund. Additionally, in the normal course of business, the Portfolio enters into contracts with third-party service providers that contain a variety of representations and warranties and that may provide general indemnifications. The Portfolio's maximum exposure under these arrangements is unknown, as this would involve future claims that may be made against the Portfolio that have not yet occurred. The Manager believes that the risk of loss in connection with these potential indemnification obligations is remote. However, there can be no assurance that material liabilities related to such obligations will not arise in the future, which could adversely impact the Portfolio.

Note 3—Fees and Related Party Transactions

(A) Manager and Subadvisor. New York Life Investments, a registered investment adviser and an indirect, wholly-owned subsidiary of New York Life, serves as the Portfolio's Manager, pursuant to an Amended and Restated Management Agreement ("Management Agreement"). The Manager provides offices, conducts clerical, recordkeeping and bookkeeping services and keeps most of the financial and accounting records required to be maintained by the Portfolio. Except for the portion of salaries and expenses that are the responsibility of the Portfolio, the Manager pays the salaries and expenses of all personnel affiliated with the Portfolio and certain operational expenses of the Portfolio. The Portfolio reimburses New York Life Investments in an amount equal to the portion of the compensation of the Chief Compliance Officer attributable to the Portfolio. MacKay Shields LLC ("MacKay Shields" or the "Subadvisor"), a registered investment adviser and an indirect, wholly-owned subsidiary of New York Life, serves as the Subadvisor to the Portfolio and is responsible for the day-to-day portfolio management of the Portfolio. Pursuant to the terms of an Amended and Restated Subadvisory Agreement between New York Life Investments and MacKay Shields, New York Life Investments pays for the services of the Subadvisor.

Pursuant to the Management Agreement, the Fund pays the Manager, on behalf of the Portfolio, a monthly fee for the services performed and the facilities furnished at an annual rate of the Portfolio's average daily net assets as follows: 0.60% up to \$500 million; 0.55% from \$500 million to \$1 billion; 0.50% from \$1 billion to \$2 billion; and 0.49% in excess of

\$2 billion. During the six-month period ended June 30, 2023, the effective management fee rate was 0.54%.

During the six-month period ended June 30, 2023, New York Life Investments earned fees from the Portfolio in the amount of \$4,564,676 and paid the Subadvisor fees of \$2,282,338.

JPMorgan provides sub-administration and sub-accounting services to the Portfolio pursuant to an agreement with New York Life Investments. These services include calculating the daily NAVs of the Portfolio, maintaining the general ledger and sub-ledger accounts for the calculation of the Portfolio's NAVs, and assisting New York Life Investments in conducting various aspects of the Portfolio's administrative operations. For providing these services to the Portfolio, JPMorgan is compensated by New York Life Investments.

Pursuant to an agreement between the Fund and New York Life Investments, New York Life Investments is responsible for providing or procuring certain regulatory reporting services for the Portfolio. The Portfolio will reimburse New York Life Investments for the actual costs incurred by New York Life Investments in connection with providing or procuring these services for the Portfolio.

(B) Distribution, Service and Shareholder Service Fees. The Fund, on behalf of the Portfolio, has entered into a distribution agreement with NYLIFE Distributors LLC (the "Distributor"), an affiliate of New York Life Investments. The Portfolio has adopted a distribution plan (the "Plan") in accordance with the provisions of Rule 12b-1 under the 1940 Act. Under the Plan, the Distributor has agreed to provide, through its affiliates or independent third parties, various distribution-related, shareholder and administrative support services to the Service Class and Service 2 Class shareholders. For its services, the Distributor is entitled to a combined distribution and service fee accrued daily and paid monthly at an annual rate of 0.25% of the average daily net assets attributable to the Service Class and Service 2 Class shares of the Portfolio.

The Board has adopted a shareholder services plan (the "Service Plan") with respect to the Service 2 Class shares of the Portfolio. Under the terms of the Services Plan, the Portfolio is authorized to pay to New York Life Investments, its affiliates or independent third-party service providers, as compensation for services rendered to shareholders of the Service 2 Class shares, in connection with the administration of plans or programs that use Portfolio shares as their funding medium a shareholder servicing fee at the rate of 0.10% on an annualized basis of the average daily net assets of the Service 2 Class shares.

(C) Transfer and Dividend Disbursing Agent. NYLIM Service Company LLC, an affiliate of New York Life Investments, serves as the transfer agent and dividend disbursing agent for Service Class and Service 2 Class shares of the Portfolio. NYLIM Service Company LLC has entered into an agreement with SS&C Global Investor & Distributor Solutions, Inc. ("SS&C"), pursuant to which SS&C performs certain transfer agent services on behalf of NYLIM Service Company LLC. During the six-month period ended June 30, 2023, all associated fees were paid by the Manager.

Note 4-Federal Income Tax

As of June 30, 2023, the cost and unrealized appreciation (depreciation) of the Portfolio's investment portfolio, including applicable derivative contracts and other financial instruments, as determined on a federal income tax basis, were as follows:

	Federal Tax Cost	Gross Unrealized Appreciation	Gross Unrealized Depreciation	Net Unrealized Appreciation/Depreciation
Investments in Securities	\$1,767,631,920	\$149,894,282	\$(132,416,500)	\$17,477,782

As of December 31, 2022, for federal income tax purposes, capital loss carryforwards of \$5,201,253, as shown in the table below, were available to the extent provided by the regulations to offset future realized gains of the Portfolio. Accordingly, no capital gains distributions are expected to be paid to shareholders until net gains have been realized in excess of such amounts.

Capital Loss Available Through	Short-Term Capital Loss Amounts (000's)	Long-Term Capital Loss Amounts (000's)
Unlimited	\$—	\$5,201

During the year ended December 31, 2022, the tax character of distributions paid as reflected in the Statements of Changes in Net Assets was as follows:

	2022
Distributions paid from:	
Ordinary Income	\$ 81,124,031
Long-Term Capital Gains	174,993,758
Total	\$256,117,789

Note 5-Custodian

JPMorgan is the custodian of cash and securities held by the Portfolio. Custodial fees are charged to the Portfolio based on the Portfolio's net assets and/or the market value of securities held by the Portfolio and the number of certain transactions incurred by the Portfolio.

Note 6-Line of Credit

The Portfolio and certain other funds managed by New York Life Investments maintain a line of credit with a syndicate of banks in order to secure a source of funds for temporary purposes to meet unanticipated or excessive redemption requests.

Effective July 25, 2023, under the credit agreement (the "Credit Agreement"), the aggregate commitment amount is \$600,000,000 with an additional uncommitted amount of \$100,000,000. The commitment fee is an annual rate of 0.15% of the average commitment amount payable quarterly, regardless of usage, to JPMorgan, who serves as the agent to the syndicate. The commitment fee is allocated among the Portfolio and certain other funds managed by New York Life Investments

Notes to Financial Statements (Unaudited) (continued)

based upon their respective net assets and other factors. Interest on any revolving credit loan is charged based upon the Federal Funds Rate, Daily Simple Secured Overnight Financing Rate ("SOFR") + 0.10%, or the Overnight Bank Funding Rate, whichever is higher. The Credit Agreement expires on July 23, 2024, although the Portfolio, certain other funds managed by New York Life Investments and the syndicate of banks may renew the Credit Agreement for an additional year on the same or different terms or enter into a credit agreement with a different syndicate of banks. Prior to July 25, 2023, the aggregate commitment amount and the commitment fee were the same as those under the current Credit Agreement. During the six-month period ended June 30, 2023, there were no borrowings made or outstanding with respect to the Portfolio under the Credit Agreement.

Note 7—Interfund Lending Program

Pursuant to an exemptive order issued by the SEC, the Portfolio, along with certain other funds managed by New York Life Investments, may participate in an interfund lending program. The interfund lending program provides an alternative credit facility that permits the Portfolio and certain other funds managed by New York Life Investments to lend or borrow money for temporary purposes directly to or from one another, subject to the conditions of the exemptive order. During the six-month period ended June 30, 2023, there were no interfund loans made or outstanding with respect to the Portfolio.

Note 8—Purchases and Sales of Securities (in 000's)

During the six-month period ended June 30, 2023, purchases and sales of securities, other than short-term securities, were \$314,543 and \$358,515, respectively.

Note 9—Capital Share Transactions

Transactions in capital shares for the six-month period ended June 30, 2023 and the year ended December 31, 2022, were as follows:

Initial Class	Shares	Amount
Six-month period ended June 30, 2023:		
Shares sold	506,413	\$ 7,178,573
Shares issued to shareholders in reinvestment of distributions	814,849	11,547,074
Shares redeemed	(895,535)	(12,644,954)
Net increase (decrease)	425,727	\$ 6,080,693
Year ended December 31, 2022:		
Shares sold	960,462	\$ 15,906,247
Shares issued to shareholders in reinvestment of distributions	8,323,723	119,474,150
Shares redeemed	(3,767,669)	(61,588,499)
Net increase (decrease)	5,516,516	\$ 73,791,898

Service Class	Shares	Amount
Six-month period ended June 30, 2023:		
Shares sold	3,710,130	\$ 51,960,702
Shares issued to shareholders in reinvestment of distributions	853,537	11,935,831
Shares redeemed	(3,979,665)	(55,586,107)
Net increase (decrease)	584,002	\$ 8,310,426
Year ended December 31, 2022:		
Shares sold	5,529,322	\$ 89,567,994
Shares issued to shareholders in reinvestment of distributions	9,560,026	135,597,007
Shares redeemed	(12,812,180)	(204,200,397)
Net increase (decrease)	2,277,168	\$ 20,964,604

Service 2 Class	Shares	Amount
Six-month period ended June 30, 2023:		
Shares sold	98,839	\$ 1,340,303
Shares issued to shareholders in reinvestment of distributions	6,389	89,382
Shares redeemed	(50,938)	(710,434)
Net increase (decrease)	54,290	\$ 719,251
Year ended December 31, 2022:		
Shares sold	499,962	\$ 8,259,602
Shares issued to shareholders in reinvestment of distributions	73,917	1,046,632
Shares redeemed	(583,606)	(9,652,055)
Net increase (decrease)	(9,727)	\$ (345,821)

Note 10—Other Matters

As of the date of this report, interest rates in the United States and many parts of the world, including certain European countries, continue to ascend from historically low levels. Thus, the Portfolio currently faces a heightened level of risk associated with rising interest rates. This could be driven by a variety of factors, including but not limited to central bank monetary policies, changing inflation or real growth rates, general economic conditions, increasing bond issuances or reduced market demand for low yielding investments.

Social, political, economic and other conditions and events, such as war, natural disasters, health emergencies (e.g., epidemics and pandemics), terrorism, conflicts, social unrest, recessions, inflation, rapid interest rate changes and supply chain disruptions, may occur and could significantly impact the Portfolio, issuers, industries, governments and other systems, including the financial markets. Developments that disrupt global economies and financial markets, such as COVID-19, the conflict in Ukraine, and the failures of certain U.S. and non-U.S. banks, may magnify factors that affect the Portfolio's performance.

Note 11—Subsequent Events

In connection with the preparation of the financial statements of the Portfolio as of and for the six-month period ended June 30, 2023, events and transactions subsequent to June 30, 2023, through the date the

financial statements were issued have been evaluated by the Manager for possible adjustment and/or disclosure. No subsequent events requiring financial statement adjustment or disclosure have been identified.

Discussion of the Operation and Effectiveness of the Portfolio's Liquidity Risk Management Program (Unaudited)

In compliance with Rule 22e-4 under the Investment Company Act of 1940, as amended (the "Liquidity Rule"), the Portfolio has adopted and implemented a liquidity risk management program (the "Program"), which New York Life Investment Management LLC believes is reasonably designed to assess and manage the Portfolio's liquidity risk. A Portfolio's liquidity risk is the risk that the Portfolio could not meet requests to redeem shares issued by the Portfolio without significant dilution of the remaining investors' interests in the Portfolio. The Board of Trustees of MainStay VP Funds Trust (the "Board") previously approved the designation of New York Life Investment Management LLC as administrator of the Program (the "Administrator"). The Administrator has established a Liquidity Risk Management Committee to assist the Administrator in the implementation and day-to-day administration of the Program and to otherwise support the Administrator in fulfilling its responsibilities under the Program.

At a meeting of the Board held on February 28, 2023, the Administrator provided the Board with a written report addressing the Program's operation and assessing the adequacy and effectiveness of its implementation for the period from January 1, 2022, through December 31, 2022 (the "Review Period"), as required under the Liquidity Rule. The report noted that the Administrator concluded that (i) the Program operated effectively to assess and manage the Portfolio's liquidity risk, (ii) the Program has been and continues to be adequately and effectively implemented to monitor and, as applicable, respond to the Portfolio's liquidity developments and (iii) the Portfolio's investment strategy continues to be appropriate for an open-end fund. In addition, the report summarized the operation of the Program and the information and factors considered by the Administrator in its assessment of the Program's implementation, such as the liquidity risk assessment framework and the liquidity classification methodologies, and discussed notable geopolitical, market and other economic events that impacted liquidity risk during the Review Period.

In accordance with the Program, the Portfolio's liquidity risk is assessed no less frequently than annually taking into consideration certain factors, as applicable, such as (i) investment strategy and liquidity of portfolio investments, (ii) short-term and long-term cash flow projections, and (iii) holdings of cash and cash equivalents, as well as borrowing arrangements and other funding sources. Certain factors are considered under both normal and reasonably foreseeable stressed conditions.

Each Portfolio portfolio investment is classified into one of four liquidity categories. The classification is based on a determination of the number of days it is reasonably expected to take to convert the investment into cash, or sell or dispose of the investment, in current market conditions without significantly changing the market value of the investment. The Administrator has delegated liquidity classification determinations to the Portfolio's subadvisor, subject to appropriate oversight by the Administrator, and liquidity classification determinations are made by taking into account the Portfolio's reasonably anticipated trade size, various market, trading and investment-specific considerations, as well as market depth, and, in certain cases, third-party vendor data.

The Liquidity Rule requires portfolios that do not primarily hold assets that are highly liquid investments to adopt a minimum amount of net assets that must be invested in highly liquid investments that are assets (an "HLIM"). In addition, the Liquidity Rule limits a portfolio's investments in illiquid investments. Specifically, the Liquidity Rule prohibits acquisition of illiquid investments if, immediately after acquisition, doing so would result in a portfolio holding more than 15% of its net assets in illiquid investments that are assets. The Program includes provisions reasonably designed to determine, periodically review and comply with the HLIM requirement, as applicable, and to comply with the 15% limit on illiquid investments.

There can be no assurance that the Program will achieve its objectives under all circumstances in the future. Please refer to the Portfolio's prospectus for more information regarding the Portfolio's exposure to liquidity risk and other risks to which it may be subject.

Proxy Voting Policies and Procedures and Proxy Voting Record

The Portfolio is required to file with the SEC its proxy voting record for the 12-month period ending June 30 on Form N-PX. A description of the policies and procedures that are used to vote proxies relating to portfolio securities of the Portfolio is available free of charge upon request by calling 800-598-2019 or visiting the SEC's website at www.sec.gov. The most recent Form N-PX or proxy voting record is available free of charge upon request by calling 800-598-2019; visiting <https://www.newyorklifeinvestments.com/investment-products/vp>; or visiting the SEC's website at www.sec.gov.

Shareholder Reports and Quarterly Portfolio Disclosure

The Portfolio is required to file its complete schedule of portfolio holdings with the SEC 60 days after its first and third fiscal quarter on Form N-PORT. The Portfolio's holdings report is available free of charge upon request by calling 800-598-2019 or by visiting the SEC's website at www.sec.gov.

This page intentionally left blank.

MainStay VP Portfolios

MainStay VP offers a wide range of Portfolios. The full array of MainStay VP offerings is listed here, with information about the manager, subadvisors, legal counsel, and independent registered public accounting firm.

Equity

MainStay VP American Century Sustainable Equity Portfolio
MainStay VP Candriam Emerging Markets Equity Portfolio
MainStay VP Epoch U.S. Equity Yield Portfolio
MainStay VP Fidelity Institutional AM[®] Utilities Portfolio[†]
MainStay VP MacKay International Equity Portfolio
MainStay VP Natural Resources Portfolio
MainStay VP S&P 500 Index Portfolio
MainStay VP Small Cap Growth Portfolio
MainStay VP Wellington Growth Portfolio
MainStay VP Wellington Mid Cap Portfolio
MainStay VP Wellington Small Cap Portfolio
MainStay VP Wellington U.S. Equity Portfolio
MainStay VP Winslow Large Cap Growth Portfolio

Mixed Asset

MainStay VP Balanced Portfolio
MainStay VP Income Builder Portfolio
MainStay VP Janus Henderson Balanced Portfolio
MainStay VP MacKay Convertible Portfolio

Income

MainStay VP Bond Portfolio
MainStay VP Floating Rate Portfolio
MainStay VP Indexed Bond Portfolio
MainStay VP MacKay Government Portfolio
MainStay VP MacKay High Yield Corporate Bond Portfolio
MainStay VP MacKay Strategic Bond Portfolio
MainStay VP PIMCO Real Return Portfolio

Money Market

MainStay VP U.S. Government Money Market Portfolio

Alternative

MainStay VP CBRE Global Infrastructure Portfolio
MainStay VP IQ Hedge Multi-Strategy Portfolio

Asset Allocation

MainStay VP Conservative Allocation Portfolio
MainStay VP Equity Allocation Portfolio
MainStay VP Growth Allocation Portfolio
MainStay VP Moderate Allocation Portfolio

Manager

New York Life Investment Management LLC
New York, New York

Subadvisors

American Century Investment Management, Inc.
Kansas City, Missouri

Brown Advisory LLC
Baltimore, Maryland

Candriam*
Strassen, Luxembourg

CBRE Investment Management Listed Real Assets LLC
Radnor, Pennsylvania

Epoch Investment Partners, Inc.
New York, New York

FIAM LLC
Smithfield, Rhode Island

IndexIQ Advisors LLC*
New York, New York

Janus Henderson Investors US LLC
Denver, Colorado

MacKay Shields LLC*
New York, New York

Newton Investment Management North America, LLC
Boston, Massachusetts

NYL Investors LLC*
New York, New York

Pacific Investment Management Company LLC
Newport Beach, California

Segall Bryant & Hamill, LLC
Chicago, Illinois

Wellington Management Company LLP
Boston, Massachusetts

Winslow Capital Management, LLC
Minneapolis, Minnesota

Legal Counsel

Dechert LLP
Washington, District of Columbia

Independent Registered Public Accounting Firm

PricewaterhouseCoopers LLP
New York, New York

Distributor

NYLIFE Distributors LLC*
Jersey City, New Jersey

Custodian

JPMorgan Chase Bank, N.A.
New York, New York

Some Portfolios may not be available in all products.

[†] Fidelity Institutional AM is a registered trade mark of FMR LLC. Used with permission.

* An affiliate of New York Life Investment Management LLC.

2023 Semiannual Report

This report is for the general information of New York Life Variable Annuities and NYLIAC Variable Universal Life Insurance Products policyowners. It must be preceded or accompanied by the appropriate product(s) and funds prospectuses if it is given to anyone who is not an owner of a New York Life variable annuity policy or a NYLIAC Variable Universal Life Insurance Product. This report does not offer for sale or solicit orders to purchase securities.

The performance data quoted in this report represents past performance. Past performance is no guarantee of future results. Due to market volatility and other factors, current performance may be lower or higher than the figures shown. The most recent month-end performance summary for your variable annuity or variable life policy is available by calling 800-598-2019 and is updated periodically on newyorklife.com.

The New York Life Variable Annuities and NYLIAC Variable Universal Life Insurance Products are issued by New York Life Insurance and Annuity Corporation (a Delaware Corporation) and distributed by NYLIFE Distributors LLC (Member FINRA/SIPC).

New York Life Insurance Company

New York Life Insurance and Annuity Corporation (NYLIAC) (A Delaware Corporation)

51 Madison Avenue, Room 551
New York, NY 10010

newyorklife.com

newyorklifeinvestments.com

NYLIFE Distributors LLC, 30 Hudson Street, Jersey City, NJ 07302

New York Life Investment Management LLC is the investment manager to the MainStay VP Funds Trust

©2023 by NYLIFE Distributors LLC. All rights reserved.

You may obtain copies of the Prospectus and the Statement of Additional Information free of charge, upon request, by calling toll-free 800-598-2019 or writing to New York Life Insurance and Annuity Corporation, 51 Madison Avenue, New York, NY 10010.

Not FDIC Insured

No Bank Guarantee

May Lose Value